

PROVISION ISR



Now you can see!

PROFESSIONAL
SECURITY
PROVIDERS

CATALOG

MAY 2019

www.provision-isr.com

INDEX

SUCCESS STORIES	4	SWITCH POE	
OS, SOFTWARE & APP		HIGH POWER POE	37
CYBER SECURITY	5	POE SWITCH 10/100 Mbps	37-38
OSSIA	6-7	POE SWITCH Giga 10/100/1000 Mbps	38
PROFESSIONAL CMS	8	POE ACCESSORIES	39
IP MANAGER	9	AHD TECHNOLOGY	
PROVISION CAM2	10-11	BASIC 720/1080P	44
VIDEO ANALYTICS	12-13	ECO 2MP	45
FACE RECOGNITION	14	PRO 2MP	46-47
IP TECHNOLOGY		PRO (HIDDEN) 2MP	48-49
S-SIGHT 2MP	17	ULTRA 2MP	50
S-SIGHT 3MP	18	PRO 4MP	50
S-SIGHT 5MP	19	ECO 5MP	51
S-SIGHT 8MP	20	PRO 5MP	52
X-SIGHT 2MP	21	PRO 8MP	53
EYE-SIGHT 2MP	22	ULTRA 5MP	53
EYE-SIGHT 4MP	23	PTZ PRO 2MP	54
EYE-SIGHT 5MP	24-25	SPEED DOME 2MP	54
EYE-SIGHT 8MP	26	DVR	
DARK-SIGHT 5MP	26	DVR 2MP LITE	56
SPECIAL CAMERAS & FISHEYE	27	DVR 2MP PRO	57
VIDEO SERVER	27	DVR 5MP LITE	57-58
PTZ 2MP-3MP-4MP	29	DVR 5MP PRO	59
SPEED DOME 2MP-3MP	30	DVR 8MP LITE	59-60
NVR		CCTV ACCESSORIES	
4 CH	32	USB ALARM BOX	62
8 CH	33	HDMI ACCESSORIES	62-63
8CH - 16 CH	34	BALUN	64
32/64 CH/128 CH	35	TEST MONITOR / MONITOR	65
		POWER SUPPLY UNITS	66-67
		BRACKETS & JUNCTION BOXES	68-69
		PTZ BRACKETS	70
		CONNECTORS, KEYBOARD,LENS	70



“...Through creativity and innovation, we transformed barren deserts into flourishing fields and pioneered new frontiers in science and technology.”

Shimon Peres (Former president of Israel)

PROVISION-ISR is an Israeli multinational company founded in 2007 to meet the demands for high quality products in the medium segment of the CCTV market. Israel has experienced the threat of terrorism for decades, and out of necessity, has come to excel in the homeland security arena. Many Israeli security manufacturers hail from a variety of specialties including: emergency management, cyber-security, intelligence, critical infrastructure protection, smart cities etc. Provision-ISR specializes in leading-edge CCTV solutions.



“Don’t give people what they want, give them what they need.”

Joss Whedon (American screenwriter)

Provision-ISR’s range of devices, encompasses different camera series, specifically designed to help the installers to find the best suited solution for their customers. We’re able to meet the needs of any kind of customer: from those who seek a professional CCTV line, that is able to guarantee the best image quality, to those who look for the best price offer.



“Knowledge is power. Information is liberating. Education is the premise of progress, in every society.”

Kofi Annan (Former Ghanaian Diplomat)

In today’s CCTV market, where products and technologies change every few months, knowledge is the keyword, and we believe that delivering the information all the way from the manufacturer thru the entire chain all the way to the installer is our responsibility.

Provision-ISR’s technical specialists, release a new How-to-tutorial every time a new solution is launched into the market.

Technical webinars are periodically organized to update Provision-ISR customers about product upgrades or new features.

Last but not least, Provision-ISR roadshows, seminars, training sessions and workshops take place all over the world to support distributors, sub distributors and installers.



“I’m a big believer that accessories can make a look.”

Nina Garcia (Colombian fashion journalist, editor-in-chief of Elle magazine)

Provision-ISR represents a One-Stop-Shop for all CCTV product needs.

Our range of products includes a full series of tested and reliable accessories, many of which are specifically designed for CCTV market!

The CCTV mode function featuring Provision-ISR PoE Switches, is just an example of the above mentioned.



“I want to break free.”

Queen (British rock band)

We believe that the installer shouldn't be forced to choose among brands or technologies.
This is why Provision-ISR solutions have been designed to be compatible with the ones of other brands.



“Simplicity is the ultimate sophistication.”

Leonardo da Vinci (Renaissance painter, scientist, inventor, and polymath)

According to Provision-ISR philosophy “advanced” shouldn't to signify “complicated”.
This is why our Israeli engineers' aim is in developing advanced software solutions (video analytics above all else) keeping the user interface simple and intuitive



**“We live in a time of astounding technological advancements.
There are deep-sea drones and live-streaming virtual reality.”**

Jenna Wortham (Award-winning journalist for The New York Times)

Provision-ISR software developers, always keep an eye on technological developments.
Our software and apps follow the latest trend in the technology market, such as: virtual reality, gaming, social networks sharing and touch gesture.



“The best way to find out if you can trust somebody is to trust them.”

Ernest Hemingway (Nobel prize winner for literature)

Since the beginning, Provision-ISR's professional ethics have led the company to “protect” all the players in the supply chain, from the big distributor to the small installer, respecting the professionalism of each one.
In Provision-ISR's eyes, each “link” (manufacturer, distributor, installer and end user) follows his own role within the chain and makes it perfect. Both the distributors and the installers who choose Provision-ISR, feel confident with the Brand who daily demonstrates its approach with concrete actions: for instance, unlike other manufacturers, Provision-ISR discourages online sales.

"We're working hard to achieve our goal:
bringing security where security is needed".

Ari Pick – Provision-ISR CEO

PROVISION-ISR SUCCESS STORIES

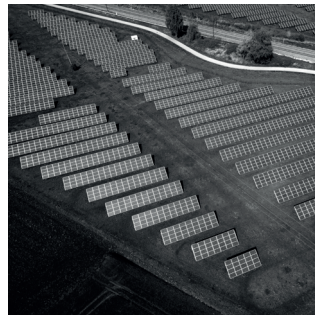
Provision-ISR has been in the CCTV market since 2007. Through the years, the Israeli company has gained the trust of the international security market and today the world is filled with thousands of projects carried by the brand: Hospitals, Shopping Centers, Industrial Complexes, Hotels, Sport Facilities, Residential areas, Museums, Historical Buildings etc. Provision-ISR CCTV solutions are developed to fulfill any kind of security requirement, from the most common to the most critical.



Sport facilities
FNB Stadium - Johannesburg



Financial
Stock Exchange - Johannesburg



Energy
Renesola pv solar farms - Poland



Historical buildings
National Library - Florence



Retail
Hoodies Group - Israel



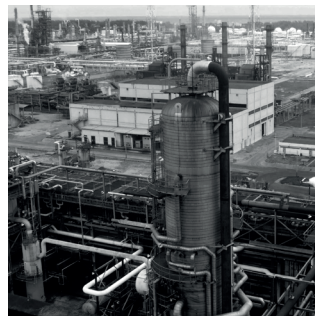
Farming
Medical cannabis farms - Israel



Transportation
Central railway station - Pisa



Safe cities
City monitoring - Inowroclaw



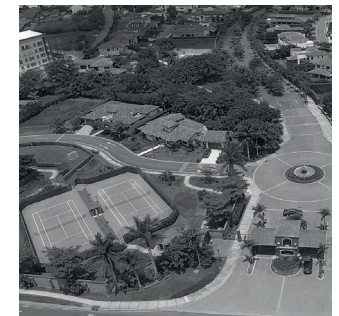
Industrial
Refineria pemex - Ciudad Madero



Hospitality
Polonia Palace Hotel - Warsaw



Healthcare
City hospital - Plock



Residential
Cerro Alto Condominium- Costa Rica

CYBER SECURITY

Cyber-attacks are increasing and have become a global concern.

Top decision-makers need to start adopting multi-faceted strategies that incorporate effective solutions, processes and protocols.

Provision-ISR started to consider Cyber Security as a priority in 2016, when the Ossia platform was launched onto the market.

From that moment, our team of engineers work diligently to improve the security of our CCTV systems.



MAIN FEATURES

- Connection via secured P2P Cloud services
- Encrypted password recovery mechanism
- Black/White Lists
- User Authority Management
- Auto Logout
- Closing Telnet port entirely
- Ability to disable video when logged out
- Password strength Indicator
- Default password prompt
- Enhanced protection against password generators
- HTTPS Secure protocol
- 802.X Security protocol
- Cloud update service for auto update
- **Config files encryption**
- **HDD data encryption**
- **Unique password set upon initial startup**



Ossia is the latest OS for Provision-ISR's DVR/NVR systems. It is one of the most innovative operation systems available in the market. It offers full compatibility with all of Provision-ISR IP cameras with full control over all main features. Moreover, it offers the user all required tools for complete utilization of the system while keeping things simple and intuitive. The firmware is based on the most advanced SOC technology and boasts a new graphical user interface (GUI) particularly easy to use, even compared to the previous version.

MAIN FEATURES

- H.265 Encoding Support*
- Manual Alarm Output
- Up to 8MP Support*
- 4K (Ultra HD) Support*
- Full Analytics Support
- Enhanced Security Features
- Advanced Network Protocols (QoS, 801.X, HTTPS support , Etc...)
- Scheduled Push Notification
- E-mail Notifications
- CMS Feature*
- SNMP Protocol
- PoS
- Analytics for analog DVR*
- Fisheye support (only NVRs 2MP)
- Face recognition support (only NVRs featuring "F" in the code)
- Dual IP configuration
- Support HDD Hibernation and encryption
- 4k output upgraded to 60Hz
- Mic
- HFR
- All IPC analytic supported by NVR such as people counting
- New Face features



SMART CONFIGURATION

- Advanced HDD Management
- Double Stream Recording
- Situation Dependent Recording
- Default Username/Password Configuration
- RTSP Input configuration
- Dynamic Hybrid*
- Cloud upgrading
- Channel input from other devices get alarms status (FW 1.3.3)
- CCTV mode on PoE NVR
- Independent HDMI and VGA output settings NVR only
- Alarm out name modification
- Limit recording time per channel
- Master/Sub/Dual Stream record selection

SEARCH PLAYBACK AND BACKUP

- New and Intuitive "Picture Slice Search"
- Instant "Sub-Stream" Playback
- One Click Backup
- Smart Time-Bar View and Control
- Multiple Backup Tasks
- FTP Backup
- Smart search*
- RAID function (only NVRs 64/128CH)
- Log improvements such as - 6 month, Operator IP address
- Encrypted video backup

WEB CLIENT INTERFACE

- New and Intuitive Design
- Full Configuration Capabilities
- Remote Playback with Time Bar
- Real-time Sub-stream Configuration
- Multiple Configuration Sessions
- Full PTZ Control
- Two Way Audio
- Cloud live backup and configuration
- Upgrading through web client

IN-CHANNEL OPERATIONS

- In-Channel Playback
- In-Channel Sequence*
- In-Channel Digital Zoom
- In-Channel PTZ Operations

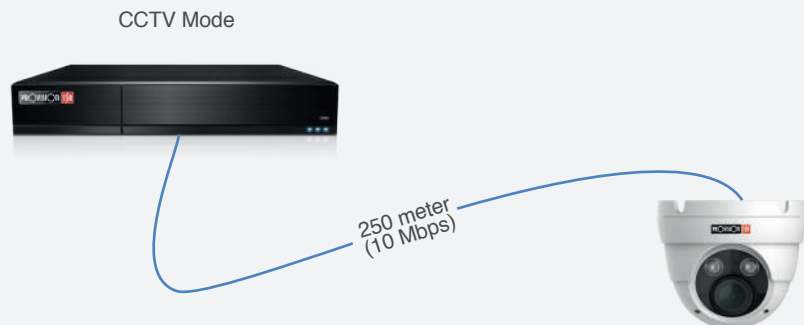
INTUITIVE OPERATIONS

- One-Click Manual Record
- One-Click Alarm/Relay Output
- Camera Layout Presets
- 3D PTZ Operation
- Definable Instant Playback
- Audio Control
- Corridor mode*
- Quickly cancel unwanted pop-ups
- Improved Wizard interface

*Supported devices only

CCTV MODE ON POE NVR: DISTANCE IS NO LONGER AN ISSUE!

The CCTV mode, limits the communication to 10Mbps for each channel and increases the connection stability and the communication distance to a maximum of 250 meters.

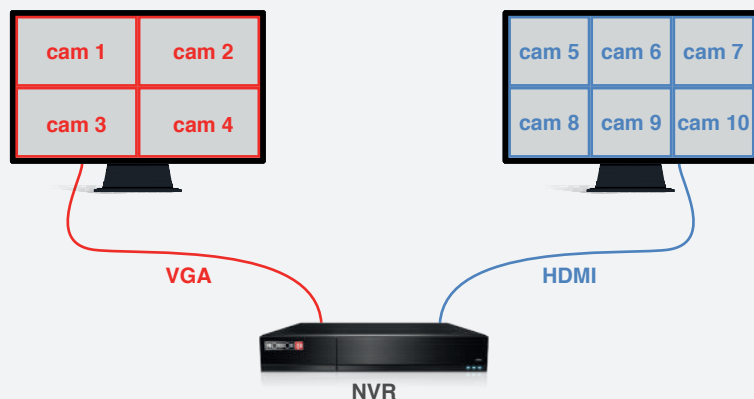


INDEPENDENT HDMI AND VGA OUTPUT SETTINGS: FEEL FREE TO CHOOSE!

This new feature provides the ability to set and present the video output from HDMI and VGA as two different units.

You can choose the screen layout, the channels you wish to see for each video output and improve your control and management.

This feature is available only for NVR recorders.

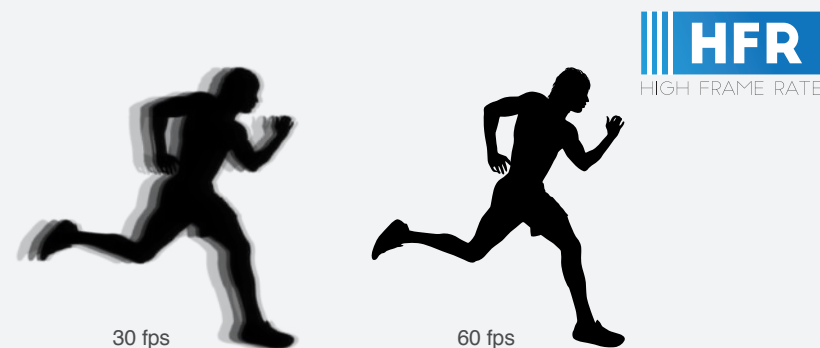


HFR: FASTER! SMOOTHER! BETTER!

Starting from version 1.4.1 for NVRs and 1.3.5 for DVRs all devices will support HFR technology.

HFR means Higher Frame Rate per second with the maximum of 60 FPS!

Thanks to HFR, you can experience video streaming in the highest quality with a smooth clear image.



LIMIT RECORDING TIME PER CHANNEL: SAVING HDD SPACE IS SAVING MONEY

Starting from version 1.4.1 for NVRs and 1.3.5 for DVRs, limitation time for recording DATA can be set per channel.

Each channel can be configured for a specific customized period of time in which the recorded DATA will be saved.

A cost effective solution for more efficient storage management by choosing the stream record type (main/sub) for every camera, according to the requirement.

Camera's recording parameters				
Camera name	Pre-record time	Delayed recording time	Expiration time	
WatchCamera	5 Secs	10 Secs	Never expire	
DI-390IP5336	5 Secs	10 Secs	Never expire	
IPC	5 Secs	10 Secs	6 Days	
DMA-340IP536	5 Secs	10 Secs	240 Hrs	

Professional CMS

Provision-ISR's CMS is a free PC Software used for all imaging products from Provision-ISR (DVRs, NVRs and IP Cameras).

It offers simultaneous live view and playback from multiple devices and full remote configuration for recording devices and cameras. The CMS is a professional software that requires minimal learning and understanding of the software's method of work, but once understood, it offers excellent features for complex installations and multi branch complexes.

MAIN FEATURES

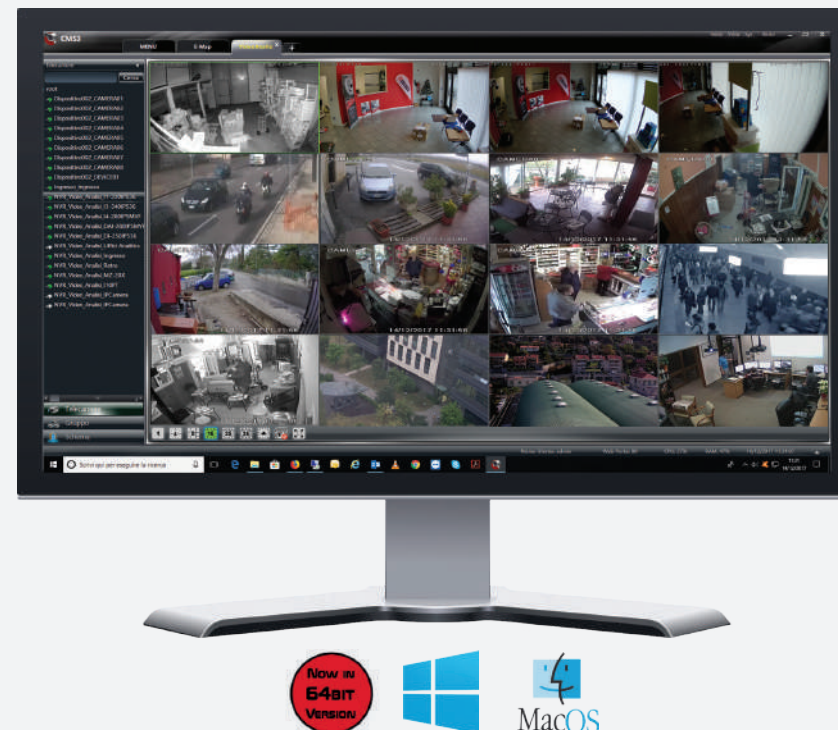
- Support of up to 1000 devices
- Multi device live view
- Single login for all devices
- Web-client access
- Map Support
- 2 Way Audio Support - listen and talk
- Manual alarm trigger
- Remote Playback
- Local video recording and playback
- Local Snapshot
- Full Device Configuration (remote)
- PTZ Support
- Camera group configuration
- Smart user management
- Multi-Screen Display
- Multi-Language Support
- ONVIF Device Support (Limited)
- Now in 64 bit version
- Cloud P2P Support
- Face recognition support*

MULTISCREEN DISPLAY

Multi Screen view allows you to utilize your CMS over several PC screens. Using tabs, each screen can display a chosen view individually (For example: Live view, map, settings and Playback). In other situations, the screens can all display live view images at the same time so more channels will be viewed in larger size.

REMOTE WEB CLIENT

The CMS requires powerful hardware in order to run smoothly. If you need more than 1 CMS workstation - the CMS can be installed on 1 powerful PC that will be connected by less powerful computers over LAN/WAN.



ALARM MONITORING

The CMS synchronizes with all the alarm inputs/outputs of the devices connected to it. Therefore it allows easy monitoring over sensors and alarm relays.

LOCAL OR REMOTE PLAYBACK

Supporting both remote (saved on device and local (saved on PC) playback of up to 16 channels (depends on device's technical specs)

REMOTE CONFIGURATION

The CMS allows full configuration on both local parameters and over all devices connected to it.

E-MAP SUPPORT

You can set your cameras on top of electronic maps and view it in a click of a mouse button. Multiple maps can be added creating layers and zoomed-in zones.

TWO WAY AUDIO

As a monitoring station, the CMS allows you to have two way audio with all supporting devices (Both incoming and outgoing audio).

VIDEO ANALYTICS

The CMS allows both the configuration of videoanalysis and the reproduction of specific events.

IP MANAGER

The IP manager is a free PC software used to detect all NVRs, DVRs and IP Cameras in the local network. It is also used for advanced and quick IP camera configuration.

MAIN FEATURES

- Detects all Provision-ISR devices in the network
- Detects ONVIF cameras in the network
- Offers live preview of the selected Provision-ISR camera
- Showing all the information needed by the user (Configurable)
- Allows single/batch camera configuration including:
 - Full network parameters setting
 - Firmware update
 - Password settings
 - Picture settings
 - Stream Settings
- Allows initializing camera reset protocol

SOFTWARE UPGRADE

Update IPC software/kernel directly from the tool.
It is possible to update several IPC from the same type together.

NETWORK CONFIGURATION

Configure network settings for 1 IP camera or more.
You can either set fixed IP or DHCP from the tool.

STREAM CONFIGURATION

Set the video stream of the camera.
This should only be used if the camera serves as a standalone.
Only cameras with v 3.4.2.1 and up will support this feature.

SET PICTURE

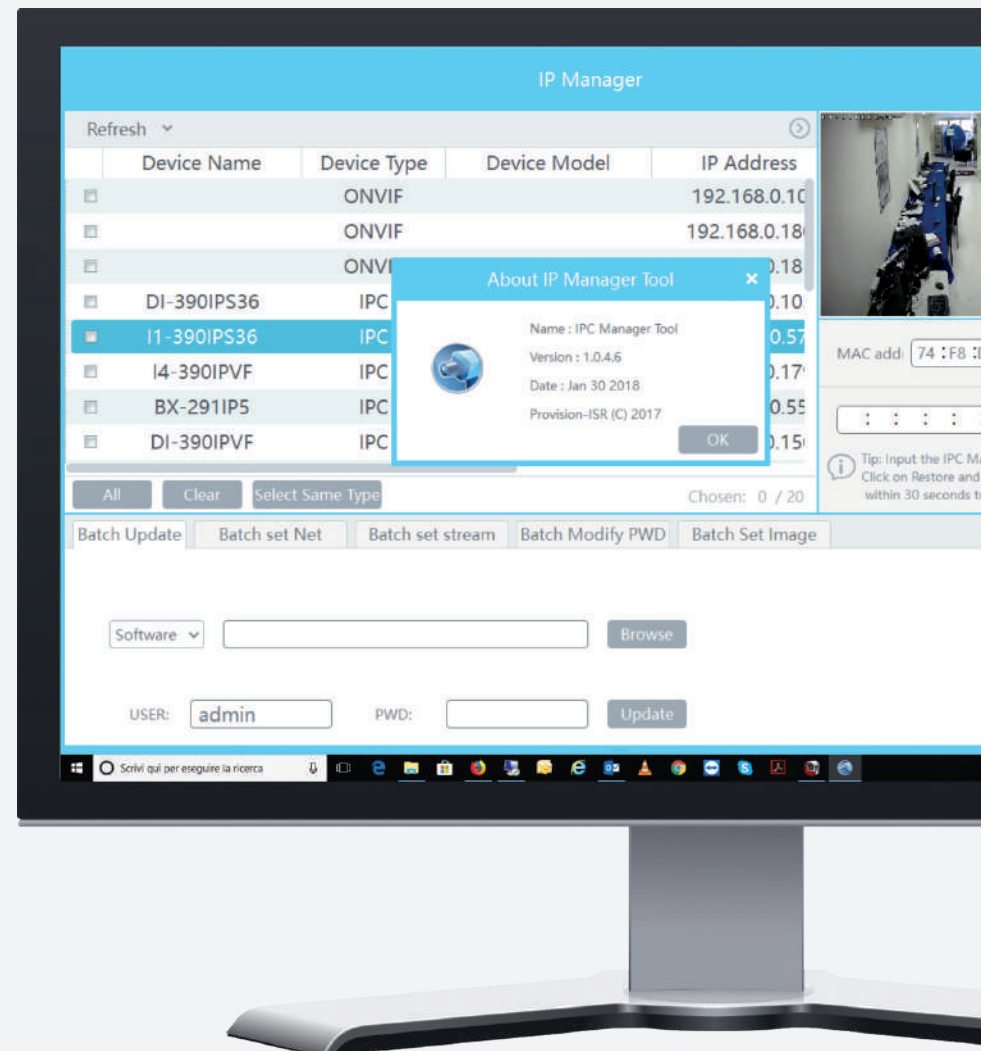
Quickly set all the pictures parameters (3D-DNR, Mirror, Flip, IR, Etc.) for all the required cameras.

MODIFY PASSWORD

Securing your site is top priority.
This tool will allow you to change the password of all IPCs in just one click.

CAMERA RESET

Possibility to reset the camera directly by means of the tool: additional actions are required for security reasons.



EASY, POWERFULL, COOL!



PROVISION CAM 2

Provision Cam2 is a free application for iOS & Android devices. It is compatible with all NVRs, DVRs and static IP Cameras. It offers the users full control over their devices including live view, playback and settings. It is secured against unauthorized access and is user friendly and intuitive for all users.

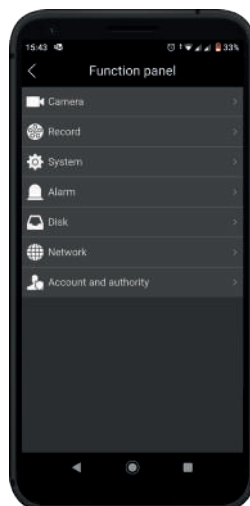
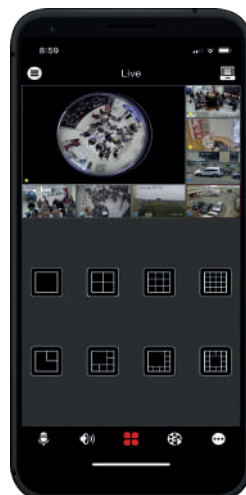


EXERCISE YOUR FREEDOM OF CHOICE

Provision-ISR app allows you to choose what's best for you!

You can choose:

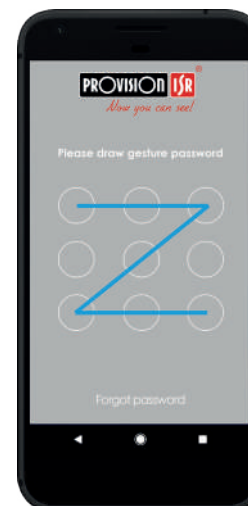
- what kind of view you will get when you open the APP (just a specific device, a favorite group of channels, the last viewed layout).
- what happens when you open a push notification (channel live view, playback point of the event, ...)
- the live view channel display mode (number or name).
- what kind of playback events will be showed (all, motion, sensors, analytics,)
- your desired view layout from 8 different view modes.
- your video stream according to your network speed.



ALL YOU NEED IS APP

No need to access your device interface: all can be done from the Provision Cam2 App!

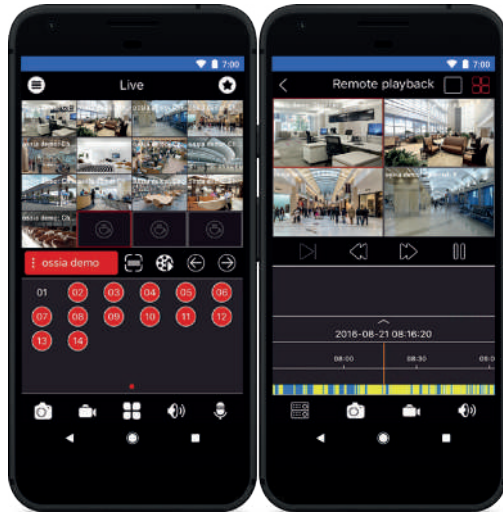
- Set your devices directly through the app with full configuration abilities as if you were actually at the installation site.
- Add faces to your face database
- Backup recorded files
- Talk and listen to through supported devices
- Activate your alarms
- P2P connection directly to the camera (no NVR needed)



TOUCH GESTURE

Full control at your fingertips!

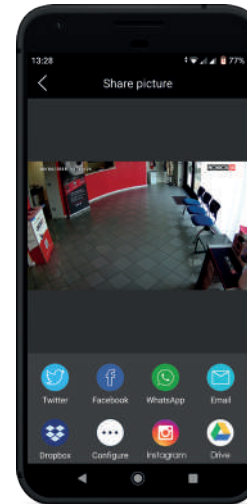
- Login password gesture
- Playback bar (pinch for zooming)
- PTZ and motorized lens control
- Drag & drop option to open device/channel live view
- Fisheye view



MIX AND MATCH

Feel free to view the way you want it!

- Visualize a mix of live view channels from different devices around the world on one screen and keep it as a favorite group.
- Visualize a mix of playback channels from different devices around the world and play them back simultaneously.

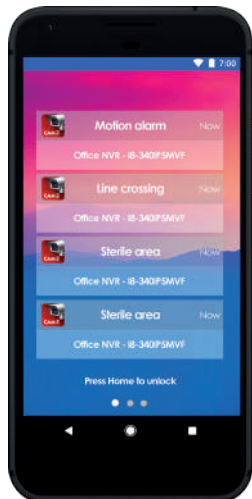


IT'S ALL ABOUT SHARING

Share more by using any supported application on your smartphone!

ProvisionCam2 App allows you to share what you want through any application installed on your smartphone such as: WhatsApp, Facebook, WeChat, LinkedIn, Dropbox, E-mail and much more!

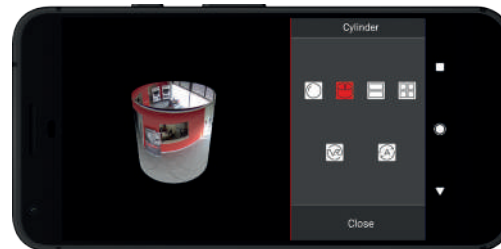
- Share the QR code to allow your colleagues or family members to easily log-in to your device.
- Share snapshots or video clips from both live view and playbacks.
- Did you come across a problem? Share the problem log with our engineers directly through the App!



NOTIFY ME

Stay connected to your device and find out what's going on by getting a scheduled push notification!

- Motion/analytic/sensor event
- Channel/ device malfunctions
- HDD problem

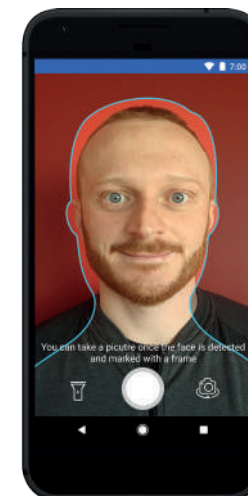


FISHEYE CAMERA

Enjoy the ultimate fisheye viewing experience!

We drew inspiration from the latest gaming and smartphone technologies to offer you a unique "virtual trip"!

- Virtual reality - moving the phone in any direction will move the image accordingly!
- Virtual PTZ - zoom in/out and move inside the image for a full 360° view!
- Cylinder mode - get a 3D image and feel free to rotate and zoom the image with a swipe of a finger.



FACE RECOGNITION

Bring the new face recognition experience to your smartphone!

Why not use your smartphone to build your own face database? You can capture faces directly from your App instead of using your IP camera!

- Take snapshots of faces and add them to the data base!
- Pick up the face picture from your phone gallery and add them to the database!
- Search for a specific person by taking his picture directly using the app or use the existing database.

MORE ACCURATE, MORE EFFICIENT

Provision-ISR engineers developed Intelligent Video Analytics solutions with the aim of conferring an added value on the IP video surveillance systems included in Provision-ISR range. The new features coming with Provision-ISR Intelligent Video Analytics solutions allow the camera to automatically detect anomalous situations that occur within its field of view, generating alarm actions followed by immediate notifications.

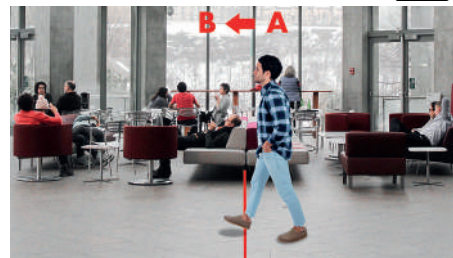
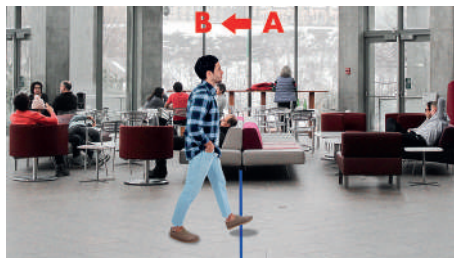
STERILE AREA

- Detects if any object/person entered the defined area.
- Up to 4 areas can be monitored.



LINE CROSSING

- Alarms when an object crosses a defined line.
- Crossing direction can be chosen.
- Up to 4 lines can be monitored.



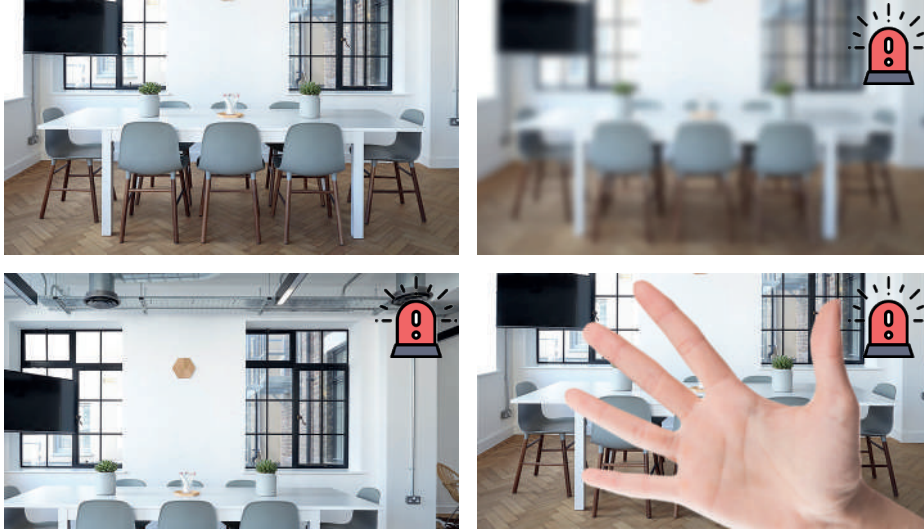
PEOPLE INTRUSION

- Covers the whole scene.
- Detects people movement.
- The alarm trigger is based on the definition of schedule.



CAMERA TAMPERING

- Can detect and alarm 3 situations:
 1. Camera shifting: in case the camera was forcibly moved out of place.
 2. Camera masking: detects if the camera was covered or tampered in a way that blocks its view.
 3. Lens tampering: detects lens tampering causing blurred image.



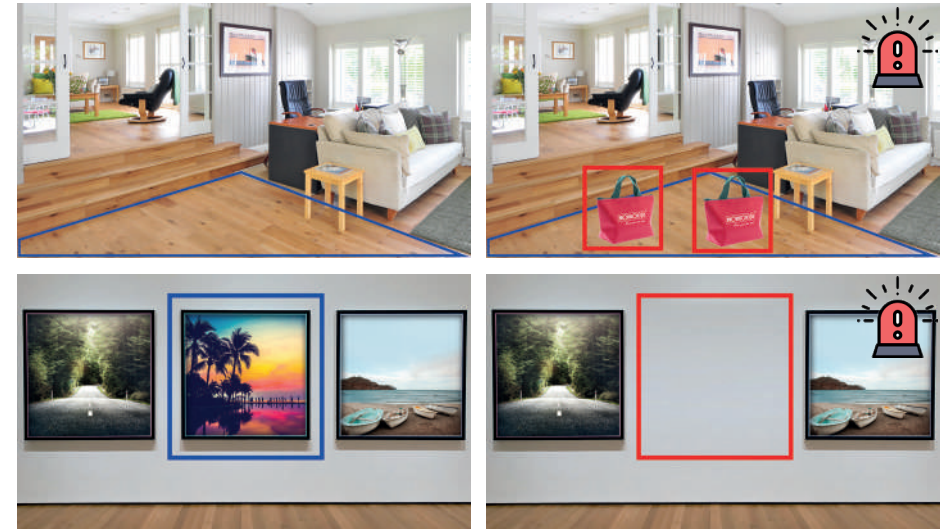
CROWD GATHERING

- Alarms when there is a gathering of people in a preconfigured area.
- The alarm trigger is based on the definitions of area, crowd density (percentage) and schedule.



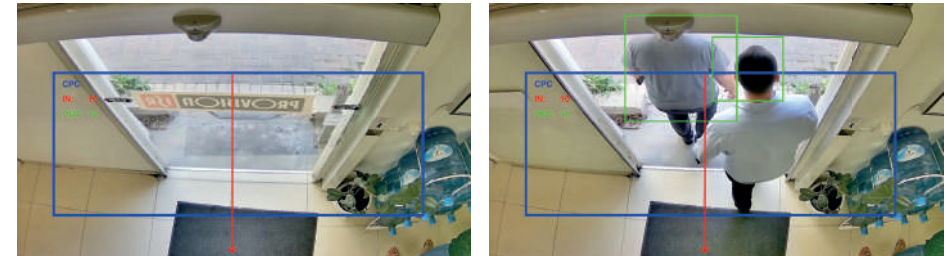
OBJECT MONITORING

- Monitors either missing or left objects.
- Up to 4 objects/areas can be monitored.



PEOPLE COUNTING

- Enables the camera to count how many people have entered and exited a defined passage and to generate the alarm accordingly.
- The counter can be reset on a daily, weekly or monthly basis.



FACE RECOGNITION



The Face Recognition is part of the Intelligent Video Analytics functions developed by Provision-ISR.
If the "face detection" is managed by the camera; the "face recognition" is managed by the NVR.



DYNAMIC FACE DETECTION (Camera Side)

A single camera can detect, trace and evaluate 5-10 faces simultaneously, depending on the scene conditions.



FACE RECOGNITION (NVR Side)

The recognition rate can be up to 98% if the distance between two pupils is higher than 20 pixels. A maximum of 10,000 face pictures can be stored in the NVR face database. The NVR support various triggers and responses upon detection.

DATABASE SEARCH CAPABILITIES

- Single person or a group search
- Possibility to get all the events where a person was recognized.
- Quick backup and playback data export.
- Possibility to add new faces to the database.
- Possibility to search new and existing faces using Provision Cam2 Mobile App.



FACE DATABASE FLEXIBLE MANAGEMENT

- Detected faces can be registered into the face database with a single click.
- Database can be securely exported and imported to other devices.
- New faces can be added to the database through Provision Cam2 Mobile App.
- The database can be managed locally and remotely using the Web-Client.



MOVEMENT TRACKING

After uploading an E-map and positioning all the related cameras over it, you will be able to search for a person and the system will show his track over the map by time order as well as play related video playback.



RECOGNITION STATISTICS

The system offers a recognition statistics chart by day, week, month, quarter or any customized period.



VIDEO 
ANALYTICS

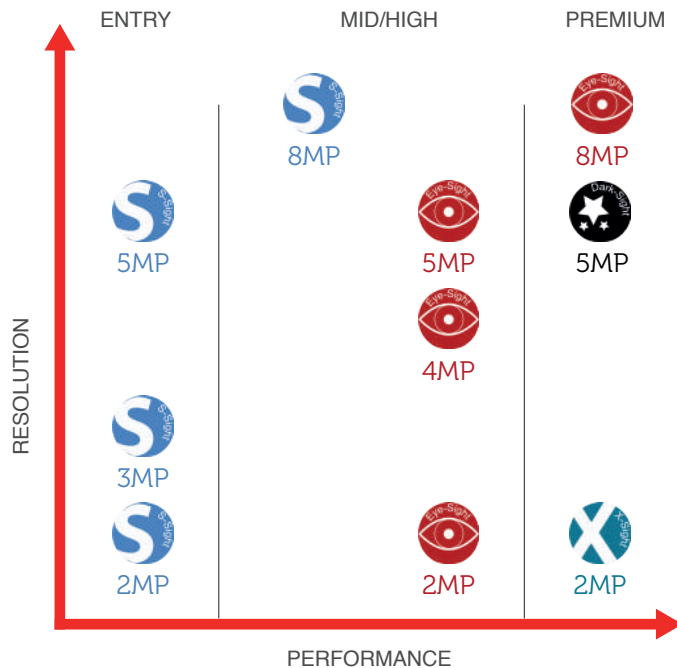
IP TECHNOLOGY

SMART SOLUTIONS THROUGH THE NETWORK

IP Protocol is the most common form of communication between computer networks and the Internet. Therefore, it is ideal for streaming a high-quality video through networking infrastructure. IP surveillance technology, offers a high-tech flexible solution without compromising reliability or picture quality. With Provision-ISR's superior production quality, high picture resolution, advanced features and a wide product range, users will surely find, their IP based surveillance system solution.

APPLICATIONS:

BASIC: Residential/SOHO PnV IP Cameras, requiring no previous installation knowledge.
MEDIUM: installation featuring a single NVR with several IP cameras.
PLUS: numerous cameras linked by POE switches, NVRs and a professional CMS software.



S for simple: series dedicated to the the installer who's seeking for user friendly solutions at the best price conditions.



Series dedicated to the installer who's looking for great performances also under extreme light conditions.



Series dedicated to the installer who's asking for a professional line featuring advanced analytics functions and **face detection***. The series supports P2P connection.



Series dedicated to the installer who's asking for the perfect night time security surveillance cameras.



Series dedicated to the installer who needs to cover a wide area guaranteeing the possibility to angle the camera from remote.



Series dedicated to the installer who faces uncommon requests (discrete, c- mount and fisheye cameras).



IP CAMERA MODEL NAME INDEX

Category X	Sub-Category X	CMOS size 0	Resolution 0	Lux 0	Solution X X	Lens 0 0
I	4	3	9	0	I P	V F
B	X	2	5	1	I P	

example

IP PTZ CAMERA MODEL NAME INDEX

PTZ X	Zoom ratio X X	Technology 0	Resolution 0	Special feat X X
Z	20	IP	1	IR
Z	30	IP	2	

example

Category	
Symbol	Description
B	Body
D	Dome
FE	Fish-Eye
I	Infra Red (IR) Bullet
M	Mini
Z	Ultra Z PTZ

Sub-Category	
Symbol	Description
X	No subcategory
A	Anti vandal
AI	Anti vandal (IR)
C	Pinhole cone shape
I	Infra red (IR)
M	Mini
MA	Mini Anti Vandal
PT	Pan/Tilt
1	IR 10-19 m
3	IR 30-39 m
4	IR 40-49 m
5	IR 50-59 m
8	IR 80-89 m
10	IR 100-109 m

CMOS size	
Symbol	Description
2	~ 1/2"
3	~ 1/3"

Resolution	
Symbol	Description
9	2 MP (1080P)
3	3 MP
4	4 MP
5	5 MP
6	6 MP
8	8 MP

LUX	
Symbol	Description
0	0 (IR on)
1	Below ~ 0.009
2	0.01 ~ 0.1

Solution	
Symbol	Description
IPA	H.264+
IP5	H.265
IPS	Economy
IP5S	H.265 Economy

Lens	
Symbol	Description
28	2.8mm
36	3.6mm
37	3.7mm
43	4.3mm
X4	x4 zoom
X10	x10 zoom
X20	x20 zoom
VF	Vari-focal
MVF	Motorized VF (with auto focus)

Category	
Symbol	Description
Z	Ultra-Z PTZ
MZ	Mini Ultra-Z PTZ

Zoom ratio	
Symbol	Description
20	x20 Optical Zoom
30	x30 Optical Zoom

Technology	
Symbol	Description
IP/IPE	H.264

Resolution	
Symbol	Description
1	720P
2	1080P
3	3MP

Special features	
Symbol	Description
IR	IR Illumination

IP CAMERAS S-Sight 2MP



DI-390IP5S28



DI-390IP5S36



DI-390IP5SVF W/G



I1-390IP5S36



I3-390IP5SVF



Image sensor	1/2.7" CMOS – 2MP (16:9)	1/2.7" CMOS – 2MP (16:9)	1/2.7" CMOS – 2MP (16:9)	1/2.7" CMOS – 2MP (16:9)	1/2.7" CMOS – 2MP (16:9)
Effective pixels	1920X1080	1920X1080	1920X1080	1920X1080	1920X1080
Max. resolution	2MP(1920x1080)@25/30FPS	2MP(1920x1080)@25/30FPS	2MP(1920x1080)@25/30FPS	2MP(1920x1080)@25/30FPS	2MP(1920x1080)@25/30FPS
Min. illumination	day: 0.1 lux-night: 0.03 lux 0lux IR on	day: 0.1 lux-night: 0.03 lux 0lux IR on	day: 0.1 lux-night: 0.03 lux 0lux IR on	day: 0.1 lux-night: 0.03 lux 0lux IR on	day: 0.1 lux-night: 0.03 lux 0lux IR on
Privacy mask	Yes	Yes	Yes	Yes	Yes
Video analytics	-	-	-	-	-
Image enhancement	Digital WDR,ROI	Digital WDR,ROI	Digital WDR,ROI	Digital WDR,ROI	Digital WDR,ROI
Day/night	ICR	ICR	ICR	ICR	ICR
Noise reduction	3D-DNR	3D-DNR	3D-DNR	3D-DNR	3D-DNR
Motion detection	Yes	Yes	Yes	Yes	Yes
IR distance	15 m (2 High Power IR LED)	15 m (2 High Power IR LED)	25 m (2 High Power IR LED)	15 m (24 IR LED)	30 m (36 IR LED)
Lens	2,8 mm (102°)	3,6mm (97°)	2,8-12 mm (99.4°-40.6°)	3,6mm (97°)	2,8-12 mm (92°-34°)
Network / Ethernet	RJ45 (+PoE)	RJ45 (+PoE)	RJ45 (+PoE)	RJ45 (+PoE)	RJ45 (+PoE)
Analog video output	-	-	-	-	-
Audio input	-	-	-	-	-
Audio output	-	-	-	-	-
SD card	-	-	-	-	-
Power supply	DC12V-280mA / PoE-4W	DC12V-280mA / PoE-4W	DC12V-280mA / PoE-4W	DC12V-380mA / PoE-6W	DC12V-500mA / PoE-6,5W
Alarm	-	-	-	-	-
Video compression	H.265	H.265	H.265	H.265	H.265
Protection	IP66	IP66	IP66	IP66	IP66
Junction Box	PR-B55JB - PR-B47JB+	PR-B55JB - PR-B47JB+	PR-B55JB - PR-B47JB+	PR-B45JB - PR-B37JB+	PR-B45JB - PR-B47JB+

IP CAMERAS S-Sight 3MP



DI-330IPS36



DI-330IPSVF



I1-330IPS36



I3-330IPSVF



Image sensor	1/3" CMOS – 3MP (4:3)	1/3" CMOS – 3MP (4:3)	1/3" CMOS – 3MP (4:3)	1/3" CMOS – 3MP (4:3)
Effective pixels	2048X1536	2048X1536	2048X1536	2048X1536
Max. resolution	3MP(2048X1536)@1/30FPS	3MP(2048X1536)@1/30FPS	3MP(2048X1536)@1/30FPS	3MP(2048X1536)@1/30FPS
Min. illumination	day: 0.06 lux-night: 0.04 lux 0lux IR on	day: 0.06 lux-night: 0.04 lux 0lux IR on	day: 0.06 lux-night: 0.04 lux 0lux IR on	day: 0.06 lux-night: 0.04 lux 0lux IR on
Privacy mask	Yes	Yes	Yes	Yes
Video analytics	-	-	-	-
Image enhancement	Digital WDR, ROI	Digital WDR, ROI	Digital WDR, ROI	Digital WDR, ROI
Day/night	ICR	ICR	ICR	ICR
Noise reduction	3D-DNR	3D-DNR	3D-DNR	3D-DNR
Motion detection	Yes	Yes	Yes	Yes
IR distance	15 m (2 high power IR LED)	25 m (2 high power IR LED)	15 m (24 IR LED)	30 m (36 IR LED)
Lens	3,6 mm (90°)	3-11 mm (72° - 27°)	3,6 mm (90°)	3-11 mm (72° - 27°)
Network / Ethernet	RJ45 (+PoE)	RJ45 (+PoE)	RJ45 (+PoE)	RJ45 (+PoE)
Analog video output	-	-	-	-
Audio input	-	-	-	-
Audio output	-	-	-	-
SD card	-	-	-	-
Power supply	DC12V-280mA / PoE-4W	DC12V-280mA / PoE-4W	DC12V-380mA / PoE-6W	DC12V-500mA / PoE-6,5W
Alarm	-	-	-	-
Video compression	H.264	H.264	H.264	H.264
Protection	IP66	IP66	IP66	IP66
Junction Box	PR-B55JB - PR-B47JB+	PR-B55JB - PR-B47JB+	PR-B45JB - PR-B37JB+	PR-B45JB - PR-B47JB+

IP CAMERAS S-Sight 5MP



DI-350IP5S28



DI-350IP5S36



DI-350IP5SMVF



I1-350IP5S36



I3-350IP5SVF



I3-350IP5SMVF



Image sensor	1/3" CMOS – 5MP (4:3)	1/3" CMOS – 5MP (4:3)	1/3" CMOS – 5MP (4:3)	1/3" CMOS – 5MP (4:3)	1/3" CMOS – 5MP (4:3)	1/3" CMOS – 5MP (4:3)
Effective pixels	2592X1944	2592X1944	2592X1944	2592X1944	2592X1944	2592X1944
Max. resolution	5MP(2592X1944)@20FPS	5MP(2592X1944)@20FPS	5MP(2592X1944)@20FPS	5MP(2592X1944)@20FPS	5MP(2592X1944)@20FPS	5MP(2592X1944)@20FPS
Min. illumination	day: 0.045 lux-night: 0.01 lux 0lux IR on	day: 0.045 lux-night: 0.01 lux 0lux IR on	day: 0.045 lux-night: 0.01 lux 0lux IR on	day: 0.045 lux-night: 0.01 lux 0lux IR on	day: 0.045 lux-night: 0.01 lux 0lux IR on	day: 0.045 lux-night: 0.01 lux 0lux IR on
Privacy mask	Yes	Yes	Yes	Yes	Yes	Yes
Video analytics	Yes	Yes	Yes	Yes	Yes	Yes
Image enhancement	BLC, HLC, Digital WDR,ROI	BLC, HLC, Digital WDR,ROI	BLC, HLC, Digital WDR,ROI	BLC, HLC, Digital WDR,ROI	BLC, HLC, Digital WDR,ROI	BLC, HLC, Digital WDR,ROI
Day/night	ICR	ICR	ICR	ICR	ICR	ICR
Noise reduction	3D-DNR	3D-DNR	3D-DNR	3D-DNR	3D-DNR	3D-DNR
Motion detection	Yes	Yes	Yes	Yes	Yes	Yes
IR distance	15 m (10 wide angle high power IR LED)	15 m (2 high power IR LED)	25 m (2 high power IR LED)	15 m (24 IR LED)	30 m (36 IR LED)	30 m (36 IR LED)
Lens	2.8 mm (93.4°)	3,6 mm (79.4°)	3,3-12 mm (81.2°-31.8°) (motorized vari-focal)	3,6 mm (79.4°)	3-11 mm (81.2°-31.8°)	3,3-12 mm (81.2°-31.8°) (motorized vari-focal)
Network / Ethernet	RJ45 (+PoE)	RJ45 (+PoE)	RJ45 (+PoE)	RJ45 (+PoE)	RJ45 (+PoE)	RJ45 (+PoE)
Analog video output	-	-	-	-	-	-
Audio input	-	-	-	-	-	-
Audio output	-	-	-	-	-	-
SD card	-	-	-	-	-	-
Power supply	DC12V-280mA / PoE-4W	DC12V-280mA / PoE-4W	DC12V-280mA / PoE-4W	DC12V-380mA / PoE-6W	DC12V-500mA / PoE-6,5W	DC12V-500mA / PoE-6,5W
Alarm	-	-	-	-	-	-
Video compression	H.265	H.265	H.265	H.265	H.265	H.265
Protection	IP66	IP66	IP66	IP66	IP66	IP66
Junction Box	PR-B55JB - PR-B47JB+	PR-B55JB - PR-B47JB+	PR-B55JB - PR-B47JB+	PR-B45JB - PR-B37JB+	PR-B45JB - PR-B47JB+	PR-B45JB - PR-B47JB+



VIDEO ANALYTICS:

Camera tampering, line crossing, sterile area, object monitoring, smart search.



8 MP IP TECHNOLOGY



DAI+280IP5S36



4K

I1-280IP5S36



4K

Image sensor	1/2.5" CMOS – 8MP (16:9)	1/2.5" CMOS – 8MP (16:9)
Effective pixels	3840x2160	3840x2160
Max. resolution	8MP(3840x2160)@20FPS	8MP(3840x2160)@20FPS
Min. illumination	day: 0.045 lux-night: 0.01 lux 0lux IR on	day: 0.045 lux-night: 0.01 lux 0lux IR on
Privacy mask	Yes	Yes
Video analytics	Yes	Yes
Image enhancement	Digital WDR	Digital WDR
Day/night	ICR	ICR
Noise reduction	3D-DNR	3D-DNR
Motion detection	Yes	Yes
IR distance	15 m (24 IR LED)	15 m (24 IR LED)
Lens	3,6mm	3,6mm
Network / Ethernet	RJ45 (+PoE)	RJ45 (+PoE)
Analog video output	-	-
Audio input	-	-
Audio output	-	-
SD card	-	-
Power supply	DC12V-440mA / PoE-6.7W	DC12V-380mA / PoE-6W
Alarm	-	-
Video compression	H.264-H265-MJPEG	H.264-H265-MJPEG
Protection	IP66 -IK10	IP66
Junction Box	PR-B05DWB - PR-B10BJB+	PR-B45JB - PR-B37JB+



VIDEO ANALYTICS:

Camera tampering, line crossing, sterile area, object monitoring, smart search.

H265 SAME QUALITY
BETTER COMPRESSION
REVOLUTION

IP CAMERAS X-Sight 2MP



DI-390IPA36+



DI-390IPAVF+



I1-390IPA36+



I3-390IPAVF+



Image sensor	1/2.8" CMOS – 2MP (16:9)	1/2.8" CMOS – 2MP (16:9)	1/2.8" CMOS – 2MP (16:9)	1/2.8" CMOS – 2MP (16:9)
Effective pixels	1920X1080	1920X1080	1920X1080	1920X1080
Max. resolution	2MP(1920X1080)@25/30FPS	2MP(1920X1080)@25/30FPS	2MP(1920X1080)@25/30FPS	2MP(1920X1080)@25/30FPS
Min. illumination	Day: 0,005 lux-night: 0,0004 Lux, 0lux (IR On)	Day: 0,005 lux-night: 0,0004 Lux, 0lux (IR On)	Day: 0,005 lux-night: 0,0004 Lux, 0lux (IR On)	Day: 0,005 lux-night: 0,0004 Lux, 0lux (IR On)
Privacy mask	Yes	Yes	Yes	Yes
Video analytics	-	-	-	-
Image enhancement	Digital WDR, ROI	Digital WDR, ROI	Digital WDR, ROI	Digital WDR, ROI
Day/night	ICR	ICR	ICR	ICR
Noise reduction	3D-DNR	3D-DNR	3D-DNR	3D-DNR
Motion detection	Yes	Yes	Yes	Yes
IR distance	15 m (2 High Power IR LED)	25 m (2 High Power IR LED)	15 m (24 IR LED)	30 m (42 IR LED)
Lens	3,6 mm (85.8°)	2,8-12mm (95.7°-35.9°)	3,6 mm (85.8°)	2,8-12mm (95.7°-35.9°)
Network / Ethernet	RJ45 (+PoE)	RJ45 (+PoE)	RJ45 (+PoE)	RJ45 (+PoE)
Analog video output	-	-	-	-
Audio input	-	-	-	-
Audio output	-	-	-	-
SD card	-	-	-	-
Power supply	DC12V-280mA / PoE-4W	DC12V-450mA / PoE-7W	DC12V-380mA / PoE-6W	DC12V-500mA / PoE-6,5W
Alarm	-	-	-	-
Video compression	H.264+	H.264+	H.264+	H.264+
Protection	IP66	IP66	IP66	IP66
Junction Box	PR-B55JB - PR-B47JB+	PR-B55JB - PR-B47JB+	PR-B45JB - PR-B37JB+	PR-B45JB - PR-B47JB+

IP CAMERAS EYE-Sight 2MP



DMA-390IP528



DAI+390IP536



DAI+390IP5MVF



I3-390IP536



I4-390IP5MVF



Image sensor	1/2.7" CMOS – 2MP (16:9)	1/2.7" CMOS – 2MP (16:9)	1/2.7" CMOS – 2MP (16:9)	1/2.7" CMOS – 2MP (16:9)	1/2.7" CMOS – 2MP (16:9)
Effective pixels	1920 x 1080	1920 x 1080	1920 x 1080	1920 x 1080	1920 x 1080
Max. resolution	2MP(1920x1080)@25/30FPS	2MP(1920x1080)@25/30FPS	2MP(1920x1080)@25/30FPS	2MP(1920x1080)@25/30FPS	2MP(1920x1080)@25/30FPS
Min. illumination	day: 0.022 lux-night: 0,01lux 0lux IR on	day: 0.022 lux-night: 0,01lux 0lux IR on	day: 0.022 lux-night: 0,01lux 0lux IR on	day: 0.022 lux-night: 0,01lux 0lux IR on	day: 0.022 lux-night: 0,01lux 0lux IR on
Privacy mask	Yes	Yes	Yes	Yes	Yes
Video analytics	Yes	Yes	Yes	Yes	Yes
Image enhancement	True WDR (120dB), BLC/HLC/ROI	True WDR (120dB), BLC/HLC/ROI	True WDR (120dB), BLC/HLC/ROI	True WDR (120dB), BLC/HLC/ROI	True WDR (120dB), BLC/HLC/ROI
Day/night	ICR	ICR	ICR	ICR	ICR
Noise reduction	3D-DNR	3D-DNR	3D-DNR	3D-DNR	3D-DNR
Motion detection	Yes	Yes	Yes	Yes	Yes
IR distance	10 m (12 IR led)	15 m (16 power IR led)	25 m (30 IR led)	30 m (42 IR led)	40 m (48 IR led)
Lens	2.8 mm (101.7°)	3.6 mm (80.3°)	3.3-12 mm motorized lens (109.8°-38.5°)	3.6 mm (80.3°)	3.3-12 mm motorized lens (109.8°-38.5°)
Network / Ethernet	RJ45 (+PoE)	RJ45 (+PoE)	RJ45 (+PoE)	RJ45 (+PoE)	RJ45 (+PoE)
Analog video output	CVBS (BNCX1)	CVBS (BNCX1)	CVBS (BNCX1)	CVBS (BNCX1)	CVBS (BNCX1)
Audio input	Yes + built-in microphone	Yes	Yes	Yes	Yes
Audio output	-	Yes	Yes	-	Yes
SD card	Max 128 GB (Micro SD)	Max 128 GB (Micro SD)	Max 128 GB (Micro SD)	-	Max 128 GB (Micro SD)
Power supply	DC12V-340mA / PoE-4.7W	DC12V-440mA / PoE-6.7W	DC12V-360mA / PoE-6.2W	DC12V-500mA / PoE-6.5W	DC12V-600mA / PoE-8.5W
Alarm	-	-	1 In / 1 Out	-	1 In / 1 Out
Video compression	H.264-H265	H.264-H265	H.264-H265	H.264-H265	H.264-H265
Protection	IP66 - IK10	IP66 -IK10	IP66 -IK10	IP66	IP66
Junction Box	PR-B05DWB - PR-B10BJB	PR-B05DWB - PR-B10BJB+	PR-B10DJB+	PR-B45JB - PR-B47JB+	PR-B55JB - PR-B47JB+



VIDEO ANALYTICS:
Camera tampering, line crossing, sterile area, smart search.



IP CAMERAS EYE-Sight 4MP



DMA-340IP528



DMA-340IP536



I5-340IP5MV+



I8-340IP5MV+



Image sensor	1/3" CMOS – 4MP (16:9)		1/3" CMOS – 4MP (16:9)		1/3" CMOS – 4MP (16:9)	1/3" CMOS – 4MP (16:9)
Effective pixels	2688X1520		2688X1520		2688X1520	2688X1520
Max. resolution	4MP(2560X1440)@25/30FPS HFR*: 1-50/60 (Max. 1080P & D-WDR)		4MP(2560X1440)@25/30FPS HFR*: 1-50/60 (Max. 1080P & D-WDR)		4MP(2560X1440) @25/30FPS	4MP(2560X1440) @25/30FPS
Min. illumination	day: 0.045 lux-night: 0,01lux 0lux IR on		day: 0.045 lux-night: 0,01lux 0lux IR on		day: 0.045 lux-night: 0,01lux 0lux IR on	day: 0.045 lux-night: 0,01lux 0lux IR on
Privacy mask	Yes		Yes		Yes	Yes
Video analytics	Yes		Yes		Yes	Yes
Image enhancement	True WDR (120dB, HFR Disabled), BLC/HLC/ROI		True WDR (120dB, HFR Disabled), BLC/HLC/ROI		True WDR (120dB), BLC/HLC/ROI	True WDR (120dB), BLC/HLC/ROI
Day/night	ICR		ICR		ICR	ICR
Noise reduction	3D-DNR		3D-DNR		3D-DNR	3D-DNR
Motion detection	Yes		Yes		Yes	Yes
IR distance	10 m (12 IR LED)		10 m (12 IR LED)		50m (4 LED ARRAY)	80m (4 LED ARRAY)
Lens	2,8mm (107°)		3,6 mm (71°)		3,3-12mm motorized vari-focal	9-22mm motorized vari-focal
Network / Ethernet	RJ45 (+PoE)		RJ45 (+PoE)		RJ45 (+PoE)	RJ45 (+PoE)
Analog video output	CVBS (BNCX1)		CVBS (BNCX1)		CVBS (BNCX1)	CVBS (BNCX1)
Audio input	Yes (built-in microphone)		Yes (built-in microphone)		Yes	Yes
Audio output	-		-		Yes	Yes
SD card	Max 128 GB (Micro SD)		Max 128 GB (Micro SD)		Max 128 GB (SD-card)	Max 128 GB (SD-card)
Power supply	DC12V-340mA / PoE-4,7W		DC12V-340mA / PoE-4,7W		DC12V-980mA / PoE-14W	DC12V-980mA / PoE-14W
Alarm	-		-		1 In / 1 Out	1 In / 1 Out
Video compression	H.264-H265		H.264-H265		H.264-H265	H.264-H265
Protection	IP66-IP10		IP66-IP10		IP66	IP66
Junction Box	PR-B05DWB - PR-B10BJB		PR-B05DWB - PR-B10BJB		PR-B55JB - PR-B47JB+	PR-B55JB - PR-B47JB+



VIDEO ANALYTICS:

Camera tampering, line crossing, sterile area, object monitoring, people intrusion, people gathering, people counting, smart search.

*HFR (High Frame Rate) must be supported by the NVR in order to work properly.



IP CAMERAS EYE-Sight 5MP



DI-250IP528/36 W/G



DI-250IP5MVF



DAI+250IP536



DAI+250IP5VF



NEW
DAI+250IP5MVF



Image sensor	1/2.5" CMOS - 5MP (4:3)	1/2.5" CMOS - 5MP (4:3)	1/2.5" CMOS - 5MP (4:3)	1/2.5" CMOS - 5MP (4:3)	1/2.5" CMOS - 5MP (4:3)
Effective pixels	2592x1944	2592x1944	2592x1944	2592x1944	2592x1944
Max. resolution	5MP(2592x1944)@25/30 FPS HFR*: 1-50/60 (Max. 1080P & D-WDR)	5MP(2592x1944)@25/30 FPS HFR*: 1-50/60 (Max. 1080P & D-WDR)	5MP(2592x1944)@25/30 FPS HFR*: 1-50/60 (Max. 1080P & D-WDR)	5MP(2592x1944)@25/30 FPS	5MP(2592x1944)@25/30 FPS
Min. illumination	Day: 0.013lux / Night: 0.003lux	Day: 0.036Lux-Night: 0.009Lux 0 Lux IR On	Day: 0.013lux / Night: 0.003lux	Day: 0.013lux / Night: 0.003lux	Day: 0.036lux / Night: 0.009lux 0lux with IR on
Privacy mask	Yes	Yes	Yes	Yes	Yes
Video analytics	Yes	Yes	Yes	Yes	Yes
Image enhancement	True WDR (120dB, HFR Disabled), BLC/HLC/ROI	True WDR (120dB, HFR Disabled), BLC/HLC/ROI	True WDR (120dB, HFR Disabled), BLC/HLC/ROI	True WDR (120dB), BLC/HLC/ROI	True WDR (120dB, HFR Disabled) / BLC / HLC / ROI
Day/night	ICR	ICR	ICR	ICR	ICR
Noise reduction	3D-DNR	3D-DNR	3D-DNR	3D-DNR	3D-DNR
Motion detection	Yes	Yes	Yes	Yes	Yes
IR distance	15m (10 Wide Angle High Power IR LED)	25 m (2 High Power IR LED)	15m (16 High Power IR LED)	25m (30 IR LED)	25m (30 IR LED)
Lens	2.8mm (98°) 3.6mm (84.5°)	3,3-12 mm (98°-36°)	3.6mm (84.5°)	3.3-10.5mm (94°-35°)	3.3-12mm Motorized with Auto-Focus (97.5°-38.5°)
Network / Ethernet	RJ45 (+PoE)	RJ45 (+PoE)	RJ45 (+PoE)	RJ45 (+PoE)	RJ45 (+PoE)
Analog video output	CVBS (RCAx1)	CVBS (BNCx1)	CVBS	CVBS (BNCx1)	CVBS (BNCx1)
Audio input	Yes	Yes	Yes	Yes	Yes
Audio output	-	-	-	Yes	Yes
SD card	-	-	Up to 128 Gb	Up to 128 Gb	Up to 128 Gb
Power supply	DC12V/~280mA / PoE/~4W	DC12V-280mA / PoE-4W	DC12V/~440mA / PoE/~6.7W	DC12V/~360mA / PoE/~6.2W	DC12V/~360mA / PoE/~6.2W
Alarm	-	-	-	1 In / 1 Out	1 In / 1 Out
Video compression	H.264-H265	H.264-H265	H.264-H265	H.264-H265	H.264-H265
Protection	IP66	IP66	IP66 -IK10	IP66 -IK10	IP66 -IK10
Junction Box	PR-B55JB - PR-B47JB+	PR-B55JB - PR-B47JB+	PR-B05DWB - PR-B10BJB+	PR-B10DJB+	PR-B10DJB+



VIDEO ANALYTICS:

Camera tampering, line crossing, sterile area, object monitoring, people intrusion, people gathering, people counting, smart search, face detection.

*HFR (High Frame Rate) must be supported by the NVR in order to work properly.



H265 SAME QUALITY
BETTER COMPRESSION
REVOLUTION

IP CAMERAS EYE-Sight 5MP



NEW
BX-252IP5



I1-250IP536



I3-250IP536



I4-250IP5VF



I4-250IP5MVF



Image sensor	1/2.5" CMOS - 5MP (4:3)	1/2.5" CMOS - 5MP (4:3)	1/2.5" CMOS - 5MP (4:3)	1/2.5" CMOS - 5MP (4:3)	1/2.5" CMOS - 5MP (4:3)
Effective pixels	2592X1944	2592X1944	2592X1944	2592X1944	2592X1944
Max. resolution	5MP(2592x1944)@25/30 FPS HFR*: 1-50/60 (Max. 1080P & D-WDR)	5MP(2592x1944)@25/30 FPS HFR*: 1-50/60 (Max. 1080P & D-WDR)	5MP(2592x1944)@25/30 FPS HFR*: 1-50/60 (Max. 1080P & D-WDR)	5MP(2592x1944)@25/30 FPS HFR*: 1-50/60 (Max. 1080P & D-WDR)	5MP(2592x1944)@25/30 FPS HFR*: 1-50/60 (Max. 1080P & D-WDR)
Min. illumination	Day: 0.013lux / Night: 0.003lux (@F1.2, AGC On)	Day: 0.013lux / Night: 0.003lux	Day: 0.013Lux-Night: 0.003Lux 0 Lux IR On	Day: 0.013Lux-Night: 0.003Lux 0 Lux IR On	Day: 0.036Lux-Night: 0.009Lux 0 Lux IR On
Privacy mask	Yes	Yes	Yes	Yes	Yes
Video analytics	Yes	Yes	Yes	Yes	Yes
Image enhancement	True WDR (120dB, HFR Disabled) / BLC / HLC / ROI	True WDR (120dB, HFR Disabled), BLC/HLC/ROI	True WDR (120dB, HFR Disabled), BLC/HLC/ROI	True WDR (120dB, HFR Disabled), BLC/HLC/ROI	True WDR (120dB, HFR Disabled), BLC/HLC/ROI
Day/night	ICR	ICR	ICR	ICR	ICR
Noise reduction	3D-DNR	3D-DNR	3D-DNR	3D-DNR	3D-DNR
Motion detection	Yes	Yes	Yes	Yes	Yes
IR distance	-	15m (30 IR LED)	30 m (42 IR LED)	40 m (48 IR LED)	40 m (48 IR LED)
Lens	CS Mount	3.6mm (84.5°)	3,6 mm (84.5°)	3,3-10.5 mm (94°-35°)	3,3-12 mm (98°-36°)
Network / Ethernet	RJ45 (+PoE)	RJ45 (+PoE)	RJ45 (+PoE)	RJ45 (+PoE)	RJ45 (+PoE)
Analog video output	CVBS(BNCx1)	CVBS (BNCx1)	CVBS (BNCx1)	CVBS (BNCx1)	CVBS (BNCx1)
Audio input	Yes	Yes	Yes	Yes	Yes
Audio output	Yes	-	-	Yes	Yes
SD card	Up to 128 Gb (Micro SD)	-	-	Max 128 GB (Micro SD)	Max 128 GB (Micro SD)
Power supply	DC12V~320mA / PoE~6W	DC12V/~380mA / PoE~6W	DC12V-500mA / PoE-6.5W	DC12V-600mA / PoE-8.5W	DC12V-600mA / PoE-8.5W
Alarm	1 In / 1 Out	-	-	1 In / 1 Out	1 In / 1 Out
Video compression	H.264-H265	H.264-H265	H.264-H265	H.264-H265	H.264-H265
Protection	-	IP66	IP66	IP66	IP66
Junction Box	-	PR-B45JB - PR-B37JB+	PR-B45JB - PR-B47JB+	PR-B55JB - PR-B47JB+	PR-B55JB - PR-B47JB+



VIDEO ANALYTICS:

Camera tampering, line crossing, sterile area, object monitoring, people intrusion, people gathering, people counting, smart search, face detection.

*HFR (High Frame Rate) must be supported by the NVR in order to work properly.



IP CAMERAS EYE-Sight 8MP

IP CAMERAS DARK-Sight 5MP



4K

DAI+280IP5MVf



4K

I4-280IP5MVf



DAI-251IP5VF



I4-251IP5VF+



Image sensor	1/2.5" CMOS – 8MP (16:9)	1/2.5" CMOS – 8MP (16:9)
Effective pixels	3860x2140	3860x2140
Max. resolution	8MP(3860x2140) @ 1-25/30FPS	8MP(3860x2140) @ 1-25/30FPS
Min. illumination	Day: 0,68 Lux-Night: 0.003 Lux 0 Lux IR On	Day: 0,68 Lux-Night: 0.003 Lux 0 Lux IR On
Privacy mask	Yes	Yes
Video analytics	Yes	Yes
Image enhancement	True WDR (120dB), BLC/HLC/ROI	True WDR (120dB), BLC/HLC/ROI
Motion detection	Yes	Yes
Day/night	ICR	ICR
Noise reduction	3D-DNR	3D-DNR
IR distance	25 m (30 IR LED)	40 m (48 IR LED)
Lens	3.3-12 mm (97.5°-38.5°) (motorized vari-focal)	3.3-12 mm (97.5°-38.5°) (motorized vari-focal)
Network / Ethernet	RJ45 (+PoE)	RJ45 (+PoE)
Analog video output	CVBS (BNCX1)	CVBS (BNCX1)
Audio input	Yes	Yes
Audio output	Yes	Yes
SD card	Up to 128 Gb (Micro SD)	Up to 128 Gb (Micro SD)
Power supply	DC12V-360mA / PoE-6,2W	DC12V-600mA / PoE-8,5W
Alarm	1 In / 1 Out	1 In / 1 Out
Video compression	H.264-H265	H.264-H265
Protection	IP66-IK10	IP66
Junction Box	PR-B10DJB+	PR-B55JB - PR-B47JB+

Image sensor	1/1.8" CMOS – 5MP (4:3)	1/1.8" CMOS – 5MP (4:3)
Effective pixels	2592X1944	2592X1944
Max. resolution	5MP(2592X1944) @ 25/30FPS	5MP(2592X1944) @ 25/30FPS
Min. illumination	Day: 0.009 Lux-Night: 0.003 Lux 0 Lux IR On	Day: 0.009 Lux-Night: 0.003 Lux 0 Lux IR On
Privacy mask	Yes	Yes
Video analytics	-	Yes
Image enhancement	Digital WDR, ROI	True WDR (120dB), BLC/HLC/ROI
Day/night	ICR	ICR
Noise reduction	3D-DNR	3D-DNR
Motion detection	Yes	Yes
IR distance	25 m (30 IR LED)	40 m (48 IR LED)
Lens	3,3-10,5 mm (83.7°-36.7°)	3,3-10,5 mm (83.7°-36.7°)
Network / Ethernet	RJ45 (+PoE)	RJ45 (+PoE)
Analog video output	CVBS (BNCX1)	CVBS (BNCX1)
Audio input	Yes	Yes
Audio output	Yes	Yes
SD card	Up to 64 Gb (Micro SD)	Up to 128 Gb (Micro SD)
Power supply	DC12V-360mA / PoE-6,2W	DC12V-600mA / PoE-8,5W
Alarm	1 In / 1 Out	1 In / 1 Out
Video compression	H.264-H265	H.264-H265
Protection	IP66-IK10	IP66
Junction Box	PR-B10DJB	PR-B55JB - PR-B47JB+



VIDEO ANALYTICS:

Camera tampering, line crossing, sterile area, object monitoring, people intrusion, people gathering, people counting, smart search, face detection.



H265 SAME QUALITY
BETTER COMPRESSION
REVOLUTION



VIDEO ANALYTICS:

Camera tampering, line crossing, sterile area, object monitoring, people intrusion, people gathering, people counting, smart search.



IP CAMERAS SPECIAL



BX-291IP5



MC-392IP543



FEI-360IP5



Image sensor	1/1.9" CMOS – 2MP (16:9)	1/1.3" CMOS – 2MP (16:9)	1/2.9" CMOS – 6MP
Effective pixels	1920x1080	1920x1080	2160x2160
Max. resolution	2MP(1920x1080) @25/30FPS	2MP(1920x1080) @25/30FPS	5MP(2160x2160) @1-25/30FPS
Min. illumination	Day: 0.0028Lux-Night: 0.0003Lux	Day: 0.04Lux-Night: 0.01Lux	Day: 0.04Lux-Night: 0.01Lux 0lux IR ON
Privacy mask	Yes	Yes	Yes
Video analytics	Yes + Face recognition	-	-
Image enhancement	True WDR (120dB), BLC/HLC/ROI	Digital WDR, BLC/HLC/ROI	Digital WDR, BLC/HLC/ROI
Day/night	ICR	-	ICR
Noise reduction	3D-DNR	3D-DNR	3D-DNR
Motion detection	Yes	Yes	Yes
IR distance	-	-	15 m (6 High power IR LED wide angle)
Lens	CS Mount	4,3 mm (62°)	1.07 mm (360° ceiling mounting 180° wall mounting)
Network / Ethernet	RJ45 (+PoE)	RJ45	RJ45 (+PoE)
Analog video output	CVBS (BNCX1)	CVBS (BNCX1)	CVBS (BNCX1)
Audio input	Yes	Yes (built-in microphone)	Yes - built-in microphone
Audio output	Yes	-	Yes
SD card	Up to 128 Gb (Micro SD)	Up to 128 Gb (Micro SD)	Up to 128 Gb (Micro SD)
Power supply	DC12V-320mA/AC24V-160mA/PoE-6W	DC12V-150mA	DC12V-300mA / PoE-3W
Alarm	1 In / 1 Out	-	1 In / 1 Out
Video compression	H.264-H265	H.264-H265	H.264-H265
Protection	-	-	IK10
Junction Box	-	-	PR-B50JB

VIDEO SERVER

DVS-IP5-4



Video input	1CH Standard BNC (1.0Vp-p, impedance : 75Ω)
Input signal	AHD (4MP and Lower) / TVI (2MP and Lower) / CVBS
Supported resolution	4 MP
Framerate	1-25 / 30 FPS
Noise reduction	Yes
Motion detection	Yes
Privacy mask	Yes
Video analytics	Yes
Image orientation	Mirror / flip / corridor mode
Multistream	4 MP-3 MP-2 MP-1 MP-D1-CIF (1-25/30 FPS)
Bit rate	64 Kbps - 6 Mbps
Encode mode	VBR/CBR
Analog video output	CVBS (BNCX1)
Audio input	Yes
Audio output	Yes
SD card	Up to 128 Gb (Micro SD)
Power supply	DC12V-300mA / PoE-3W
Alarm	1 In / 1 Out
Video compression	H.264-H265
Dimension	140 mm x 75 mm x 30 mm
Operation temperature	-20°C / 55°C
Junction Box	-



VIDEO ANALYTICS:

Camera tampering, line crossing, sterile area, object monitoring, people intrusion, people gathering, people counting, smart search.



VIDEO ANALYTICS:

Camera tampering, line crossing, sterile area, object monitoring.

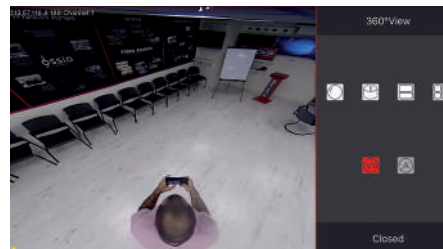
FISHEYE 360° VIRTUAL REALITY

Offering a 360-degree vision is the main advantage of Provision-ISR panoramic camera.

The extension of the visual field guaranteed by this device allows the user to gain an excellent overview avoiding the so-called blind spots.

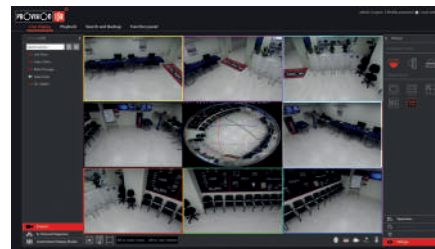
Fish-eye cameras are designed to cover 360° view for ceiling/desktop installation and 180° for wall installation. The fish-eye image can be manipulated by supported devices to be viewed in different methods, such as panoramic view, 360° stretched view and multiple digital PTZ cameras view. These manipulations can take place during live view or playback without affecting the recorded video.

Virtual Reality Live inside your camera!



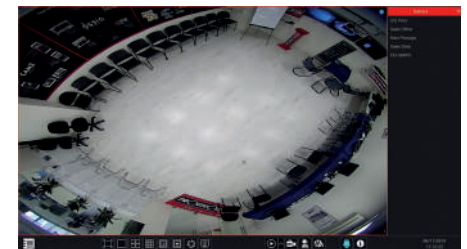
View the image as if you are standing directly beneath the camera. Moving the viewing device will move the camera image accordingly.

Oriented digital PTZ Don't get lost!



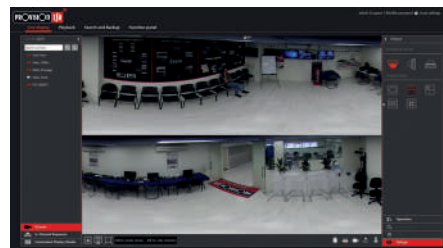
Know where you are looking at in any given moment with the new orientation technology. Each PTZ screen will be marked with a unique color.

360°/180° Stretched View Stretch it up!



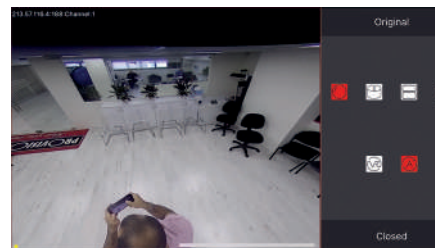
Enjoy a fully stretched image of a 360° fish-eye sphere.

Panoramic View Fancy a Panoramic view? You got it!



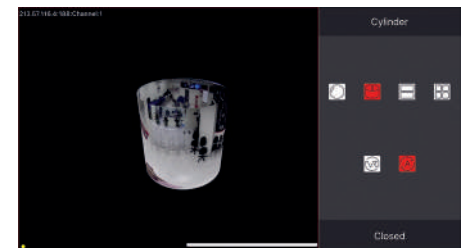
Display the image in 2 slices of 180° (Front and back). The displayed slices can be scrolled left/right.

Digital PTZ Want to look around? No problem!



Displays the image as full screen PTZ. The image position can be adjusted and zoomed accordingly.

CYLINDER We live in a 3D world!



Displays the 360° view as a 3D cylinder that can be rotated and zoomed with a swipe of a finger.

IP CAMERAS PTZ | 2 MP - 3 MP - 4 MP



I5PT-390IPX4-P



I5PT-390IPX10-P



I10PT-390IPX20



I10PT-330IPX20



I5PT-340IPX10



Image sensor	1/2.9" CMOS – 2MP (16:9)	1/2.9" CMOS – 2MP (16:9)	1/2.9" CMOS – 2MP (16:9)	1/2.9" CMOS – 3MP (4:3)	1/3" CMOS – 4MP (16:9)
Effective pixels	1920X1080	1920X1080	1920X1080	2048x1536	2560X1440
Max. resolution	2MP(1920X1080)@1-25/30FPS	2MP(1920X1080)@1-25/30FPS	2MP(1920X1080)@1-25/30FPS	3MP(2048x1536)@1-25/30FPS	4MP(2560X1440)@1-25/30FPS
Min. illumination	0,05lux (Colour), 0,01lux (B&W),0lux(IR On)	0,05lux (Colour), 0,01lux (B&W),0lux(IR On)	0,05lux (Colour), 0,01lux (B&W),0lux(IR On)	0,05lux (Colour), 0,01lux (B&W),0lux(IR On)	0,05lux (Colour), 0,01lux (B&W),0lux(IR On)
Lens	2,8-12 mm Motorized VF with Auto Focus	5,1-51 mm Motorized VF with Auto Focus	4,7-97 mm Motorized VF with Auto Focus	4,7-97 mm Motorized VF with Auto Focus	5,1-51 mm Motorized VF with Auto Focus
Pan/Tilt Range	250° Pan Rotation 65° Continuous Tilt	250° Pan Rotation 65° Continuous Tilt	360° Pan (From 0° Tilt level)/ 95° Tilt	360° Pan (From 0° Tilt level)/ 95° Tilt	250° Pan / 65° Tilt
Pan/Tilt Speed	0.5°~12°/Sec (Proportional to Zoom)	0.5°~12°/Sec (Proportional to Zoom)	Tilt: 0.5~80°/s Pan: 0.5~20°/s (Proportional to Zoom)	Tilt: 0.5~80°/s Pan: 0.5~20°/s (Proportional to Zoom)	0.5°~12°/Sec (Proportional to Zoom)
Pan/Tilt Preset speed	12°/s	12°/s	Tilt: 80°/s Pan: 20°/s	Tilt: 80°/s Pan: 20°/s	12°/s
Angle of view	81.2°(Wide) to 22.6°(Tele)	H: 50.4°(Wide) to 5.4°(Tele)	H: 55.8°(Wide) to 3.2°(Tele)	H: 55.8°(Wide) to 3.2°(Tele)	H: 54.1°(Wide) to 5.8°(Tele)
Privacy mask	Yes	Yes	Yes	Yes	Yes
Video analytics	-	-	-	-	-
Image enhancement	Digital WDR	Digital WDR	Digital WDR	Digital WDR	Digital WDR
Day/night	ICR (Auto Day/Night)	ICR (Auto Day/Night)	ICR (Auto Day/Night)	ICR (Auto Day/Night)	ICR (Auto Day/Night)
Noise reduction	3D-DNR	3D-DNR	3D-DNR	3D-DNR	3D-DNR
Motion detection	Yes	Yes	Yes	Yes	Yes
IR distance	50 m	50 m	100 m	100 m	50 m
Network / Ethernet	RJ45 (+PoE)	RJ45 (+PoE)	RJ45	RJ45	RJ45
Analog video output	-	-	-	-	-
Audio input	-	-	Yes	Yes	-
Audio output	-	-	Yes	Yes	-
Power supply	DC12V / 2A - PoE	DC12V / 2A - PoE	DC12V / 3A	DC12V / 3A	DC12V / 2A
Alarm	-	-	1 In - 1 Out	1 In - 1 Out	-
Video compression	H.264	H.264	H.264	H.264	H.264
Protection	IP66	IP66	IP66	IP66	IP66
Junction Box	-	-	-	-	-

IP CAMERAS SPEED-DOME | 2MP - 3 MP



MZ-20IP-2(IR)



Z-20IPE-2(IR)*



Z-30IPE-2(IR)*



Z-20IP-3(IR)*



Z-30IP-3(IR)*



Image sensor	1/2.8" CMOS – 2MP (16:9)	1/2.8" CMOS – 2MP (16:9)	1/2.8" CMOS – 2MP (16:9)	1/2.8" CMOS – 3MP (4:3)	1/2.8" CMOS – 3MP (4:3)
Effective pixels	1920X1080	1920X1080	1920X1080	2048x1536	2048x1536
Max. resolution	2MP(1920X1080)@1-25/30FPS	2MP(1920X1080)@1-25/30FPS	2MP(1920X1080)@1-25/30FPS	3MP(1920X1080)@1-25/30FPS	3MP(1920X1080)@1-25/30FPS
Min. illumination	0,05lux (Colour), 0,01lux (B&W),0lux(IR On)	0,05lux (Colour), 0,01lux (B&W),0lux(IR On)	0,05lux (Colour), 0,01lux (B&W),0lux(IR On)	0,05lux (Colour), 0,01lux (B&W),0lux(IR On)	0,05lux (Colour), 0,01lux (B&W),0lux(IR On)
Lens	X20 - 3,5-97mm	X20 - 3,5-97mm	X30 - 5-129mm	X20 - 3,5-97mm	X30 - 5-129mm
Pan/Tilt Range	360° (Endless) / -10°~180° (Auto Flip)	360° (Endless) / -10°~180° (Auto Flip)	360° (Endless) / -10°~180° (Auto Flip)	360° (Endless) / -10°~180° (Auto Flip)	360° (Endless) / -10°~180° (Auto Flip)
Pan/Tilt Speed	Horizontal: 0.01°/s - 90°/s Vertical: 0.01°/s - 22.5°/s	Horizontal: 0.01°/s - 350°/s Vertical: 0.01°/s - 120°/s	Horizontal: 0.01°/s - 350°/s Vertical: 0.01°/s - 120°/s	Horizontal: 0.01°/s - 350°/s Vertical: 0.01°/s - 120°/s	Horizontal: 0.01°/s - 350°/s Vertical: 0.01°/s - 120°/s
Pan/Tilt Preset speed	Horizontal: 120°/s Vertical: 22.5°/s	Horizontal: 350°/s Vertical: 120°/s	Horizontal: 350°/s Vertical: 120°/s	Horizontal: 350°/s Vertical: 120°/s	Horizontal: 350°/s Vertical: 120°/s
Angle of view	54.1° (Wide) ~ 2.8° (Tele)	54.1° (Wide) ~ 2.8° (Tele)	58.3° (Wide) ~ 2.1° (Tele)	54.1° (Wide) ~ 2.8° (Tele)	58.3° (Wide) ~ 2.1° (Tele)
Privacy mask	Yes	Yes	Yes	Yes	Yes
Video analytics	-	-	-	-	-
Image enhancement	Digital WDR	Digital WDR	Digital WDR	Digital WDR	Digital WDR
Day/night	ICR (Auto Day/Night)	ICR (Auto Day/Night)	ICR (Auto Day/Night)	ICR (Auto Day/Night)	ICR (Auto Day/Night)
Noise reduction	3D-DNR	3D-DNR	3D-DNR	3D-DNR	3D-DNR
Motion detection	Yes	Yes	Yes	Yes	Yes
IR distance	80 m	100 m	150 m	100 m	150 m
Network / Ethernet	RJ45	RJ45	RJ45	RJ45	RJ45
Analog video output	-	Yes	Yes	Yes	Yes
Audio input	-	Yes	Yes	Yes	Yes
Audio output	-	Yes	Yes	Yes	Yes
Power supply	DC12V/3A	AC24V/3A Power supply included	AC24V/3A Power supply included	AC24V/3A Power supply included	AC24V/3A Power supply included
Alarm	-	1 In/1 Out	1 In/1 Out	1 In/1 Out	1 In/1 Out
Video compression	H.264	H.264	H.264	H.264	H.264
Protection	IP66	IP66	IP66	IP66	IP66
Junction Box	page 70	page 70	page 70	page 70	page 70

*Auto tracking option available

NVR

NETWORK VIDEO RECORDER

In standard installations - the NVR will be the heart of the IP System. It is responsible for smooth communication with the cameras and the constant recording of all the data received from the connected cameras. Unlike DVRs, the NVR doesn't compress the video signal received from the IP camera but only stores it in the same way as it is already compressed by the camera.

CONVENTIONAL NVRs

This line of NVR is connected to the network and communicates with the IP cameras through the general network, without the need of direct IP camera connection.

This provides the installer highest flexibility in the design of the system and the wiring.

Basic knowledge in networking and general IP configuration is required.

POE NVRs

This line of NVRs performs as a local network switch by creating a closed internal network for the IP cameras. The IP cameras will be connected directly to the NVR by one network cable which will provide PoE power and automatically configure the camera for display & record.

These NVRs may also perform as conventional NVRs by dedicating some of the channels to communicating with any ONVIF camera connected to the network. No previous knowledge is required for this type of installation.

ONVIF

All of our NVRs support ONVIF that can be upgraded when newer versions are released. ONVIF is a communication protocol for IP cameras and NVRs. It became the standard protocol and assists IP cameras and NVRs from different companies to be able to interact with each other simply and effectively.

Our engineers keep improving and updating the ONVIF compatibility of our IP equipment in order to give the installers the easiest way of working with Provision-ISR IP Products.

NVR MODEL NAME INDEX

NVR resolution NVR #	N° channels 0	Total fps ###	Special feat. 0	Case type X X
NVR 5	8	200	P X	M M
NVR 8	16	400		2 U

NVR Resolution	
Symbol	Description
NVR5	5MP real-time
NVR8	8MP real-time

N° of channels	
Symbol	Description
4	4 Channels
8	8 Channels
16	16 Channels
32	32 Channels
64	64 Channels
128	128 Channels

Total FPS	
Symbol	Description
50	50 fps (PAL) / 60 fps (NTSC)
100	100 fps (PAL) / 120 fps (NTSC)
200	200 fps (PAL) / 240 fps (NTSC)
400	400 fps (PAL) / 480 fps (NTSC)
800	800 fps (PAL) / 960 fps (NTSC)
1600	1600 fps (PAL) / 1920 fps (NTSC)

Special features	
Symbol	Description
X	Economy series
P	PoE support
E	H.264 Economy series
F	Face recognition
A	Alarm
R	RAID support

Case type	
Symbol	Description
"none"	Small 1U case 1HDD support
MM	mini metal case 1HDD support
1U	1U case 2HDD support
1.5U	1.5U case 4HDD support
2U	2U case 8HDD support
3U	3U case 16HDD support



NVRs 5MP - 4ch

NVR5-4100E(MM)



ONVIF

NVR5-4100X+(MM)



ONVIF

NVR5-4100PX+(MM)



ONVIF



Channels	4 Channels	4 Channels	4 Channels
PoE	-	-	4
Video output	HDMI: 1920x1080 (1080P) VGA: 1280x1024, 1024x768	HDMI: 1920x1080 (1080P) VGA: 1280x1024, 1024x768	HDMI: 1920x1080 (1080P) VGA: 1280x1024, 1024x768
Max. Recording	4CH 5MP Real Time	4CH 5MP Real Time	4CH 5MP Real Time
Video compression	H264	H264 - H265	H264 - H265
Alarms	None - IPC Inputs/outputs only	None - IPC Inputs/outputs only	None - IPC Inputs/outputs only
Audio	In: IPC inputs only Out: IPC outputs only	In: IPC inputs only Out: IPC outputs only	In: IPC inputs only Out: IPC outputs only
Playback	4CH	4CH	4CH
Backup format	AVI/DAT	AVI/DAT	AVI/DAT
Browsers	IE, Safari	IE, Safari	IE, Safari
OS	MacOS, Windows Vista 7/8/10	MacOS, Windows Vista 7/8/10	MacOS, Windows Vista 7/8/10
CMS	Yes	Yes	Yes
Video analytics	Yes (Must be supported by IPC)	Yes (Must be supported by IPC)	Yes (Must be supported by IPC)
APP smart-phone/Tablet	ProvisionCam2 (Android-iOS)	ProvisionCam2 (Android-iOS)	ProvisionCam2 (Android-iOS)
Users connections	10 simultaneously	10 simultaneously	10 simultaneously
Hard Disk	1 SATA (6 TB Max)	1 SATA (6 TB Max)	1 SATA (6 TB Max)
Cloud connection	App & WEB page	App & WEB page	App & WEB page
Bandwidth (IN/OUT)	32 Mbps IN / 32 Mbps OUT	32 Mbps IN / 32 Mbps OUT	24 Mbps IN / 24 Mbps OUT
Ethernet	1xRJ45 (100Mbps)	1xRJ45 (100Mbps)	1xRJ45 (100Mbps)
Power supply	DC12V-2A	DC12V-2A	DC48V/1.04A
Dimensions	255x220x45mm	255x220x45mm	255x220x45mm



SUPPORTED ANALYTICS:
Camera tampering, line crossing, sterile area, Object Monitoring, smart search.

NVRs 5MP - 8ch



NVR5-8200E(MM)



Onvif

NVR5-8200X+(MM)



Onvif

NVR5-8200PX+(MM)



Onvif



Channels	8 Channels	8 Channels	8 Channels
PoE	-	-	8
Video output	HDMI: 1920x1080 (1080P) VGA: 1280x1024, 1024x768	HDMI: 1920x1080 (1080P) VGA: 1280x1024, 1024x768	HDMI: 1920x1080 (1080P) VGA: 1280x1024, 1024x768
Max. Recording	8CH 5MP Real Time	8CH 5MP Real Time	8CH 5MP Real Time
Video compression	H264	H264-h265	H264 - H265
Alarms	None - IPC Inputs/outputs only	None - IPC Inputs/outputs only	None - IPC Inputs/outputs only
Audio	In: IPC inputs only Out: IPC outputs only	In: IPC inputs only Out: IPC outputs only	In: IPC inputs only Out: IPC outputs only
Playback	8CH	8CH	8CH
Backup format	AVI/DAT	AVI/DAT	AVI/DAT
Browsers	IE, Safari	IE, Safari	IE, Safari
OS	MacOS, Windows Vista 7/8/10	MacOS, Windows Vista 7/8/10	MacOS, Windows Vista 7/8/10
CMS	Yes	Yes	Yes
Video analytics	Yes (Must be supported by IPC)	Yes (Must be supported by IPC)	Yes (Must be supported by IPC)
APP smart-phone/Tablet	ProvisionCam2 (Android-iOS)	ProvisionCam2 (Android-iOS)	ProvisionCam2 (Android-iOS)
Users connections	10 simultaneously	10 simultaneously	10 simultaneously
Hard Disk	1 SATA (6 TB Max)	1 SATA (6 TB Max)	1 SATA (6 TB Max)
Cloud connection	App & WEB page	App & WEB page	App & WEB page
Bandwidth (IN/OUT)	40 Mbps IN / 40 Mbps OUT	40 Mbps IN / 40 Mbps OUT	40 Mbps IN / 40 Mbps OUT
Ethernet	1xRJ45 (100Mbps)	1xRJ45 (100Mbps)	1xRJ45 (100Mbps)
Power supply	DC12V-2A	DC12V-2A	DC48V-2.5A (12,5W Max x CH)
Dimensions	255x220x45mm	255x220x45mm	255x220x45mm



SUPPORTED ANALYTICS:
Camera tampering, line crossing, sterile area, Object Monitoring, smart search.

NVRs 8MP | 8 - 16 ch 4K



NVR5-8200A



Onvif

NVR8-16400A(1U)



Onvif

NVR8-16400F (1U)



Onvif

NVR8-16400PF(1.5U)



Onvif



Channels	8 Channels	16 Channels	16 Channels	16 Channels
PoE	-	-	-	16
Video output	HDMI (4K,1080P) VGA (1280X1024)	HDMI (4K,1080P) VGA (1280X1024)	HDMI (4K,1080P) VGA (1280X1024)	HDMI (4K,1080P) VGA (1280X1024)
Max. Recording	8CH 8MP Real Time	16CH 8MP Real Time	16CH 8MP Real Time	16CH 8MP Real Time
Video compression	H264-H265	H264-H265	H264-H265	H264-H265
Alarms	4 in-1 out (+ Depends on Camera)	4 IN + Depends on Camera 1 OUT + Depends on Camera	Depends on Camera	16 IN + Depends on Camera 4 OUT + Depends on Camera
Audio	In: 1 RCA + Depends on Camera Out: 1 RCA	In: 1 CH + Depends on Camera Out: 1 RCA	In: 1 CH + Depends on Camera Out: 1 RCA	In: 1 CH + Depends on Camera Out: 1 RCA
Playback	8CH	16CH	16CH	16CH
Backup format	AVI/DAT	AVI/DAT	AVI/DAT	AVI/DAT
Browsers	IE, Safari	IE, Safari	IE, Safari	IE, Safari
OS	MacOS, Windows Vista 7/8/10	MacOS, Windows Vista 7/8/10	MacOS, Windows Vista 7/8/10	MacOS, Windows Vista 7/8/10
CMS	Yes	Yes	Yes	Yes
Video analytics	With IPC cameras	With IPC cameras	With IPC cameras + Face recognition	With IPC cameras + Face recognition
APP smart-phone/Tablet	ProvisionCam2 (Android-iOS)	ProvisionCam2 (Android-iOS)	ProvisionCam2 (Android-iOS)	ProvisionCam2 (Android-iOS)
Users connections	10 simultaneously	10 simultaneously	10 simultaneously	10 simultaneously
Hard Disk	1 SATA (8 TB Max)	2 SATA (8TB each) with Smart Management	2 SATA (8TB each) with Smart Management	4 SATA (8TB each) with Smart Management
Cloud connection	App & WEB page	App & WEB page	App & WEB page	App & WEB page
Bandwidth (IN/OUT)	64 Mbps IN / 64 Mbps OUT	112 Mbps IN / 112 Mbps OUT	160 Mbps IN / 160 Mbps OUT	160 Mbps IN / 160 Mbps OUT
Ethernet	1xRJ45 (100Mbps)	1xRJ45 (1000Mbps)	1xRJ45 (1000Mbps)	1xRJ45 (1000Mbps)
Power supply	DC12V-2A	DC12V-3A	DC12V-4A	AC100-240V
Dimensions	300X250X50mm	375X275X50mm	375X275X45mm	430x390x70mm



SUPPORTED ANALYTICS:

Camera tampering, line crossing, sterile area, Object Monitoring, smart search + face recognition (only NVR8-16400F (1U) and NVR8-16400PF(1.5U))

NVRs 8MP | 32 - 64 - 128 ch 4K

NVR8-32800F(1U)



NVR8-32800F(2U)



NVR8-32800F-16P(2U)



NVR8-641600R(2U)



NVR8-128RT(3U)
(Available upon request)



Channels	32 Channels	32 Channels	32 Channels	64 Channels	128 Channels
PoE	-	-	16	-	-
Video output	HDMI (4K,1080P) VGA(1080P,1280X1024)	HDMI1 (4K, 1080P,1280X1024) HDMI2+VGA (1080P,1280X1024) 32CH per monitor	HDMI (4K,1080P) VGA(1080P,1280X1024)	HDMI1 (4K, 1080P,1280X1024) HDMI2+VGA (1080P,1280X1024) 32CH per monitor	HDMI1 (4K, 1080P,1280X1024) HDMI2+VGA (1080P,1280X1024) 64CH per monitor
Max. Recording	32CH 8MP Real Time	32CH 8MP Real Time	32CH 8MP Real Time	64CH 8MP Real Time	128CH 8MP Real Time
Video compression	H264-H265	H264-H265	H264-H265	H264-H265	H264-H265
Alarms	Depends on Camera	8 in / 4 out + Depends on Camera	16 in/ 1 out + Depends on Camera	8 in/ 4 out + Depends on Camera	8 in/ 4 out + Depends on Camera
Audio	1 In RCA + 1 Out RCA + Depends on Camera	1 In RCA + 1 Out RCA + Depends on Camera	1 In RCA + 1 Out RCA + Depends on Camera	1 In RCA + 1 Out RCA + Depends on Camera	1 In RCA + 1 Out RCA + Depends on Camera
Playback	16CH	16CH	16CH	16CH	16CH
Backup format	AVI/DAT	AVI/DAT	AVI/DAT	AVI/DAT	AVI/DAT
Browsers	IE, Safari	IE, Safari	IE, Safari	IE, Safari	IE, Safari
OS	MacOS, Windows Vista 7/8/10	MacOS, Windows Vista 7/8/10	MacOS, Windows Vista 7/8/10	MacOS, Windows Vista 7/8/10	MacOS, Windows Vista 7/8/10
CMS	Yes	Yes	Yes	Yes	Yes
Video analytics	With IPC cameras	With IPC cameras	With IPC cameras	With IPC cameras	With IPC cameras
APP smart-phone/Tablet	ProvisionCam2 (Android-iOS)	ProvisionCam2 (Android-iOS)	ProvisionCam2 (Android-iOS)	ProvisionCam2 (Android-iOS)	ProvisionCam2 (Android-iOS)
Users connections	10 simultaneously	10 simultaneously	10 simultaneously	10 simultaneously	10 simultaneously
Hard Disk	2 SATA (8TB each) with Smart Management	8 SATA (8TB each) with Smart Management	8 SATA (8TB each) with Smart Management, 1 ESata Port	8 SATA (8TB each) with Smart Management, 2 ESata Port. *RAID support	16 SATA (8TB each) with Smart Management,2 ESata Port. RAID support
Cloud connection	App & WEB page	App & WEB page	App & WEB page	App & WEB page	App & WEB page
Bandwidth (IN/OUT)	256 Mbps IN / 256 Mbps OUT	256 Mbps IN / 256 Mbps OUT	256 Mbps IN / 256 Mbps OUT	320 Mbps IN / 320 Mbps OUT	384 Mbps IN / 384 Mbps OUT
Ethernet	1xRJ45 (1000Mbps)	2xRJ45 (1000Mbps)	1xRJ45 (1000Mbps)	2xRJ45 (1000Mbps)	2xRJ45 (1000Mbps)
Power supply	DC12V-4A	AC100-240V	AC100-240V	AC100-240V	AC100-240V
Dimensions	375X375X45mm	430X445X97mm	430X445X97mm	430X445X97mm	440X485X148mm



SUPPORTED ANALYTICS:

Camera tampering, line crossing, sterile area, Object Monitoring, smart search + face recognition (only NVR8-32800F(1U), NVR8-32800F(2U) and NVR8-32800F-16P(2U))

POE SWITCHES

STANDARD 10/100 MBPS

These PoE switches are the best choice for any standard installation. They are especially designed for IP surveillance giving extra reliability and installation simplicity. With 4/8/16/24 port options, standard uplinks and SFP ports (depending on model) they allow to find a solution for any installation.

PROFESSIONAL 10/100/1000 MBPS

The 1000Mbps (gigabyte) PoE switches are made for true professionals. The standard switches with 4 or 8 ports were designed for heavy-duty work. The professional 16/24 Port switches, equipped with an LCD monitor, were designed to display all the following PoE system information on the front panel of the device:

- Single channel In/Out power (W)
- Overload (OLP)
- Short circuit (SCP)
- Low voltage / overvoltage (alarm)
- High temperature (alarm)

CCTV MODE

The CCTV mode is actually a preconfigured VLAN (Cannot be customized by the user) that prevent all communication among the downlink ports. The CCTV mode also limits the communication to 10Mbps to increase stability. The achieved benefits of CCTV mode are:

- No communication among downlink ports (VLAN) improves the network security and data transmission efficiency.
- Limiting the communication speed to 10Mbps increases the communication distance to a maximum of 250 meter.

LCD POE SWITCHES

Provision-ISR's professional PoE switch series is now upgrading, and it is better than ever...

Provision-ISR's LCD PoE Switches series is an ideal "Plug & Watch" Power over Ethernet solution which provides quick installation, real-time PoE work status monitoring and immediate troubleshooting through its unique LCD display. Thanks to this solution we are now able to improve work efficiency and quality without any PC or software required.



LCD PoE switches

An intuitive color panel placed on the front of the switch facilitates the Ethernet management and PoE PD management. Smart and intuitive LCD control, jolts for an efficient management in large-scale networks for enterprises, hotels, shopping malls, government buildings and other public areas, and features the following special management and status functions:

- PoE management and status
- Port management and status
- Switch mode: Standard, VLAN, Extend
- Budget and bandwidth control
- PD alive check
- Maintenance: screen saver, fan control, factory default and save configuration

Keep alive

The new switch series can be configured to monitor connected PD's status in real-time via traffic detection. Once traffic of an active port stops for a set duration, the Switch will automatically restart the PoE port power, causing the PD to reboot and bring it back to a working state.

This feature will greatly enhance the reliability and reduce administrator management burden.

Port priority

The priority is used for case where the total power consumption is over the total power budget.

In this case, the port with the lowest priority will be turned off, so the switch will be able to provide stable power to a higher priority port.

There are three levels of power priorities: low, high and critical.

Port management

Unused ports can be completely disabled: Random equipment connection won't be possible.

Power management

Administrator can define the maximum power output for each PoE port.

1	2	3	4	1	2	3	4
PoE ▼ ▲				PoE ▼ ▲			
01	OLP	---M	631M	08	13.4W	---M	920M
02	8.4 W	---M	921M	09	18.9W	856M	856M
03	ULP	---M	---	10	----	W 238M	238M
04	SCP	125M	---	11	OFF	---M	---
05	2.2W	---	---	12	23.3W	323M	323M
06	23.7W	---	---	13	5.8W	983M	983M
07	16.8W	---	---	14	7.3W	223M	223M
5	PB: 300W	TP: 120.0W	PD: 0				Norm

1
2
3
4
5

Port Number. Missing ports is displayed in the next page. (Auto switch)

Port power consumption

Port download real-time bandwidth.

Port upload real-time bandwidth.

PB: the total switch "PoE budget"

TP: "Total power", the total power used

PD: Numbers of "PD device"

Norm: Status indicator. "Norm" for normal, VLAN and CCTV available

PoES-08(2H)140G+2G



8 + 2 PORT GIGA POE SWITCH

- Downlink: 8 x 1Gbps Ports
- Uplink: 2 x 1Gbps Port
- 6 PoE Ports (2 High Power)
- 130W (Avg:16.25W. Max 30W per PoE+ port, 60W per High Power port)
- Distance: Up to 100 Meter
- Built-in Surge Protection
- Complies with IEEE802.3af/at/bt

CCTV mode:

- Up to 250 meters at 10Mbps
- Vlan function: no communication among downlink ports
- Wall Bracket

PoES-0460G+1G(HPD) (Accessory for PoES-08(2H)140G+2G)



4 PORT GIGA + 1 PORT GIGA POWERED DEVICE POE SWITCH

- 4x1Gbps PoE Ports
- 1x1Gbps Ports (Powered Device)
- 55W (Avg:13.75W Max 30W per ch)
- Power Supplied from High Power PoE*
- Distance: Up to 100 Meter
- Built-in Surge Protection
- Complies With IEEE802.3af/at

*This device can only be powered by POES-08(2H)140G+2G or POEI-0160

PoES-0460C+2



PoES-0460C+2I*



PoES-08120C+2



PoES-08120C+2I*



PoES-08120+2G



PoES-08120C+2GI*



4+2-PORT 10/100MBPS POE SWITCH

- Downlink: 4x100Mbps Ports
 - Uplink: 2x 100Mbps Port
 - 60 Watt (Avg:15W Max: 30W per ch)
 - External Power Supply
 - Complies with IEEE802.3af/at PoE
 - Distance: Up to 100 Meter
 - Built-in Surge Protection
- CCTV mode:
- up to 250 meter at 10Mbps
 - Vlan function: no communication among downlink ports
 - Wall Bracket/Anti-Theft Hole Lock(k-slot)/Earthling Connector

8+2-PORT 10/100MBPS POE SWITCH

- Downlink: 8x100Mbps Ports
 - Uplink: 2x 100Mbps Port
 - 120 Watt (Avg:15W Max: 30W per ch)
 - External Power Supply
 - Complies with IEEE802.3af/at PoE
 - Distance: Up to 100 Meter
 - Built-in Surge Protection
- CCTV mode:
- up to 250 meters at 10Mbps
 - Vlan function: no communication among downlink ports
 - Wall Bracket/Anti-Theft Hole Lock(k-slot)/Earthling Connector

8 PORT 10/100MBPS + 2 PORT POE SWITCH

- Downlink: 8x100Mbps Ports
 - Uplink: 2x 1Gbps Port
 - 120 Watt (Avg:15W Max: 30W per ch)
 - External Power Supply
 - Complies with IEEE802.3af/at PoE
 - Distance: Up to 100 Meter
 - Built-in Surge Protection
- CCTV mode:
- up to 250 meters at 10Mbps
 - Vlan function: no communication among downlink ports
 - Wall Bracket/Anti-Theft Hole Lock(k-slot)/Earth Connector



PoES-16250+2Combo



NEW
PoES-16200C+2G
replacing PoES-16250+2Combo
coming soon



PoES-16300C+2Combo



16 PORT 10/100MBPS +2COMBO POE SWITCH

- Downlink: 16x100Mbps Ports
- Uplink: 2 x 1Gbps port or 2 SFP (Combo)
- 250 Watt (Avg:15W Max: 30W per Ch)
- Internal Power Supply
- Complies With IEEE802.3af/at PoE
- Distance, Up to 100 Meters
- Built-in Surge Protection
- Rack mount bracket included

16+2 PORT 10/100MBPS POE SWITCH

- Downlink: 16x100Mbps Ports
- Uplink: 2 x 1Gbps port
- 200 Watt (Avg:12.5W Max: 30W per Ch)
- Internal Power Supply
- Complies With IEEE802.3af/at PoE
- Distance, Up to 100 Meters
- Built-in Surge Protection
- Status LED
- Rack mount bracket included
- CCTV mode:
 - up to 250 meters at 10Mbps
 - Vlan function: no communication among downlink ports

16 PORT 10/100MBPS +2 COMBO POE SWITCH

- Downlink: 16x100Mbps Ports
- Uplink: 2 x 1Gbps port or 2 SFP (Combo)
- 300 watt (Avg:18.75w Max: 30W per Ch)
- Internal Power Supply
- Complies with IEEE802.3af/at PoE
- Distance: Up to 100 Meters
- Built-in Surge Protection
- LCD Status Monitor
- CCTV mode:
 - up to 250 meters at 10Mbps
 - Vlan function: no communication among downlink ports
- Rack mount bracket included

NEW
PoES-16300CL+2G+2SFP
replacing PoES-16300C+2Combo

coming soon



NEW
PoES-24300C+2G
replacing PoES-24300C+2G



NEW
PoES-24380CL+2G+2SFP
replacing PoES-24380C+2Combo



16 PORT 10/100MBPS +2 COMBO POE SWITCH

- Downlink: 16x100Mbps Ports
- Uplink: 2 x 1Gbps port or 2 SFP (Combo)
- 300 watt (Avg:18.75w Max: 30W per Ch)
- Internal Power Supply
- Complies with IEEE802.3af/at PoE
- Distance: Up to 100 Meters
- Built-in Surge Protection
- COLOR LCD Status Monitor
- CCTV mode:
 - up to 250 meters at 10Mbps
 - Vlan function: no communication among downlink ports
- Rack mount bracket included

24+2 PORT 10/100MBPS POE SWITCH

- Downlink: 24x100Mbps Ports
- Uplink: 2 x 1Gbps Port
- 300 Watt (Avg:12.5w Max: 30W per ch)
- Internal Power Supply
- Complies With IEEE802.3af/at PoE
- Distance: Up to 100 Meters
- Built-in Surge Protection
- Status LED
- CCTV mode:
 - up to 250 meter at 10Mbps
 - Vlan function: no communication among downlink ports
- Rack mount bracket included

24 PORT 10/100MBPS + 2 RJ45 + 2SFP

- Downlink: 24x100Mbps Ports
- Uplink: 2 x 1Gbps Port or 2 SFP (Combo)
- 380 Watt (Avg:15.75w Max: 30W per ch)
- Internal Power Supply
- Complies With IEEE802.3af/at PoE
- Distance: Up to 100 Meters
- Built-in Surge Protection
- Status COLOR LCD Monitor
- CCTV mode:
 - up to 250 meter at 10Mbps
 - Vlan function: no communication among downlink ports
- Rack mount bracket included

PoES-0460G+2G



4+2 PORT GIGA POE SWITCH

- Downlink: 4 x 1Gbps PoE Ports
- Uplink: 2 x 1Gbps Port
- 60 Watt (Avg:15W Max: 30W per ch)
- External Power Supply
- Complies With IEEE802.3af/at PoE
- Distance: Up to 100 Meter
- Built-In Surge Protection

PoES-08130GC+2G



8+2 PORT GIGA POE SWITCH

- Downlink: 8 x 1Gbps Ports
- Uplink: 2x 1Gbps Port
- 120 Watt (Avg:15W Max: 30W per ch)
- External Power Supply
- Complies With IEEE802.3af/at PoE
- Distance: Up to 100 Meter
- Built-in Surge Protection
- Built-In LCD For Status Indication
- CCTV mode:
 - Up to 250 meters at 10Mbps
 - Vlan function: no communication among downlink ports
- Wall Bracket

PoES-16300GC+2SFP



16+2SFP-PORT GIGA POE SWITCH

- Downlink: 16 x 1Gbps Ports
- Uplink: 2 SFP
- 300 Watt (Avg:18.75W Max: 30W per ch)
- Internal Power Supply
- Complies with IEEE802.3af/at PoE
- Distance: Up to 100 Meter
- Built-In Surge Protection
- Built-In LCD For Status Indication
- CCTV mode:
 - Up to 250 meter at 10Mbps
 - Vlan function: no communication among downlink ports
- Rack mount bracket included

NEW PoES-16300GCL+2SFP replacing PoES-16300GC+2SFP



16+2SFP-PORT GIGA POE SWITCH

- Downlink: 16 x 1Gbps Ports
- Uplink: 2 SFP
- 300 Watt (Avg:18W Max: 30W per ch)
- Internal Power Supply
- Complies with IEEE802.3af/at PoE
- Distance: Up to 100 Meter
- Built-In Surge Protection
- Built-In COLOR LCD For Status Indication
- CCTV mode:
 - Up to 250 meter at 10Mbps
 - Vlan function: no communication among downlink ports
- Rack mount bracket included

PoES-24300GC+2SFP



24+2SFP-PORT GIGA POE SWITCH

- Downlink: 24 x 1Gbps Ports
- Uplink: 2 SFP
- 380 Watt (Avg:15,8W Max: 30W per ch)
- Internal Power Supply
- Complies With IEEE802.3af/at PoE
- Distance: Up to 100 Meters
- Built-In Surge Protection
- Built-In LCD For Status Indication
- CCTV mode:
 - Up to 250 meter at 10Mbps -
 - Vlan function: no communication among downlink ports
- Rack mount bracket included

NEW PoES-24380GCL+2SFP replacing PoES-24300GC+2SFP



24+2SFP-PORT GIGA POE SWITCH

- Downlink: 24 x 1Gbps Ports
- Uplink: 2 SFP
- 380 Watt (Avg:15,8W Max: 30W per ch)
- External Power Supply
- Complies With IEEE802.3af/at PoE
- Distance: Up to 100 Meters
- Built-In Surge Protection
- Built-In COLOR LCD For Status Indication
- CCTV mode:
 - Up to 250 meter at 10Mbps -
 - Vlan function: no communication among downlink ports
- Rack mount bracket included

PoESP-0124W



1 CH POE ETHERNET SPLITTER

- Adjustable output 5VDC/2A, or 9VDC/2A or 12VDC/2A
- Maximum Power Output: Up To 24W.
- Short-Circuit Protection.
- High Efficiency DC/DC Converter
- Complies with IEEE802.3 AF/AT Power Over Ethernet

NEW
PoESP-0172W

coming soon



1 CH POE ETHERNET SPLITTER

- 24VDC / 3A Output
- Maximum Power Output: Up To 72W*.
- Short-Circuit Protection.
- High Efficiency DC/DC Converter
- Complies With IEEE802.3af/at/bt Power Over Ethernet
- DC Jack / Terminal Connector Output

PoEI-0130 / PoEI-0160



1 CH POE ETHERNET INJECTOR

- Downlink: 1x 100 Mbps
- Output: PoEI-0130 max 30W - PoEI-0160 max 60W
- Internal power supply
- Complies with IEEE802.3 at PoE
- Distance: up to 100 meters
- Built-in surge protection

PoER-01



1 CH POE EXTENDER (REPEATER)

- Extends PoE Ethernet range up to additional 100 meter 10/100Mbps Ethernet
- No additional power supply is required
- Automatically detects and protects PoE equipment from being damaged by incorrect installation
- Complies with IEEE802.3 at PoE

PoER-02



1 TO 2 CH POE EXTENDER (REPEATER)

- Allows to transmit both cameras and PoE signal Over 1 Ethernet.
- Extends PoE range up to additional 150 Meters
- 10/100Mbps Ethernet
- 2 Ch Output
- No additional power supply is required
- Automatically detects and protects PoE equipment from being damaged by incorrect installation
- Compliance with IEEE802.3 10BASE-T, IEEE802.3U 100BASE-TX, IEEE802.3af/at, Standards
- Wall Bracket/Earthing Terminal

EOC-01



ETHERNET OVER COAX (EOC)

- Set-Transmitter/Receiver
- Up To 150 meter of Ethernet over standard coax cable (RG-59)
- Passive units: no power supply needed
- Requires that the camera will be powered on

EPOC-01TR



EPOC-01T



ETHERNET & POWER TRANSMISSION OVER COAX

- Transmission distance up to 500M (power and data)
- Complies with IEEE802.3 10BASE-T, IEEE802.3u 100BASE-TX
- High speed technology, up to 100Mbps bidirectional bandwidth
- Surge and lightning protection
- Plug-and-play installation
- 48VDC Power supply is included
- EPOC-01TR supports Up to 4 EPOC-01T in cascade mode.

DCoE-01



NON-POE POWER OVER ETHERNET CONVERTER

- Set-Transmitter/Receiver
- 50 Meter working distance
- Camera DC power supply needed
- Supplies DC power input to the camera - Not PoE

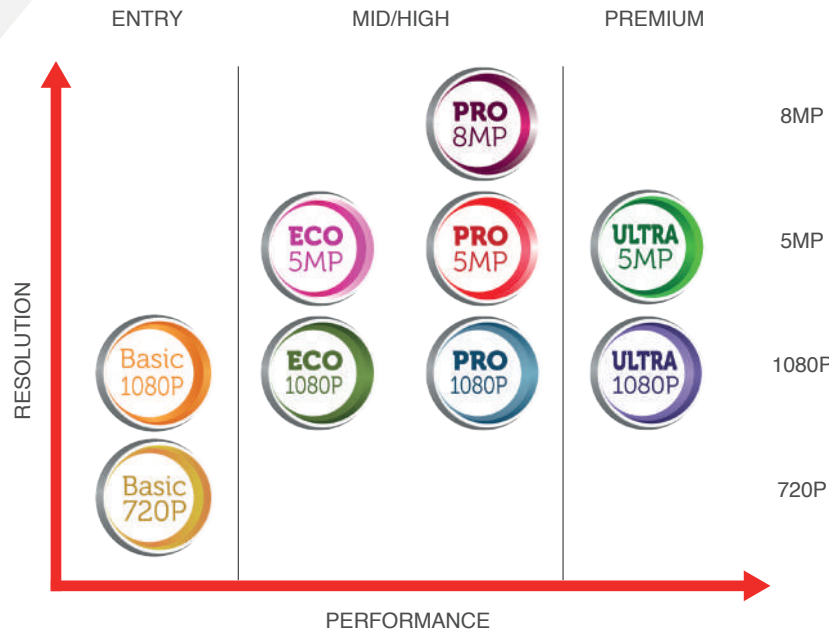
AHD TECHNOLOGY

HIGH DEFINITION THROUGH COAXIAL CABLE

AHD CCTV, is an analog high definition closed-circuit television video surveillance standard, that uses coax cable to transmit HD video from security cameras to DVRs. One of the advantages of AHD cameras, is that coax cable can be run long distances without video loss. AHD technology boasts full compatibility with analog cameras and with any analogue or digital video recorder. Provision-ISR AHD cameras, feature the universal 4in1 technology that allows the installer to choose the camera output between AHD, TVI, CVI or ANALOG.

DIP SWITCH

4 IN 1 + PAL/NTSC



BASIC 720-1080P

Series dedicated to the installer who's looking for an entry level camera suitable for indoor installations and offered at the best price conditions.

ECO 1080P - 5MP

Series dedicated to the installer who's looking for a mid level camera suitable for small indoor or outdoor installations.

PRO 1080P - 5MP - 8MP

Series dedicated to the installer who's looking for a high-level camera emphasizing the difference in terms of image quality. The installer who needs to cover a wide public area with a powerful and extremely versatile cameras, can choose our PRO 1080P PTZ devices.

ULTRA 1080P - 5MP

Series dedicated to the installer who's looking for a premium-level camera able to guarantee excellent performances also under extreme light conditions.

HD CAMERA MODEL NAME INDEX

Category	Sub-Category	CMOS size	Resolution	Lux	Solution	Lens
X	X	0	0	0	X X	0 0

example

I	4	3	5	0	A	V F
B	X	3	9	2	AHD	

Category	
Symbol	Description
B	Body
D	Dome
I	Infra Red (IR) Bullet
M	Mini

Sub-Category	
Symbol	Description
X	No subcategory
A	Anti vandal
AI	Anti vandal (IR)
C	Pinhole cone shape
F	Fire sprinkler
I	Infra red (IR)
L	Spotlight shape
M	Mini
PT	Pan/Tilt
S	Smoke detector
V	PIR detector
W	Snake
Z	PTZ
1	IR 10-19 m
2	IR 20-29 m
3	IR 30-39 m
4	IR 40-49 m
5	IR 50-59 m

CMOS size	
Symbol	Description
2	~ 1/2"
3	~ 1/3"

Resolution	
Symbol	Description
8	1.3 MP (720P)
9	2 MP (1080P)
4	4 MP
5	5 MP
8	8 MP

LUX	
Symbol	Description
0	0 (IR on)
1	Below ~ 0.009
2	0.01 ~ 0.1

Solution	
Symbol	Description
AB	4 in 1 Basic
AE	4 in 1 Eco
AU	4 in 1 Ultra
A	4 in 1 Pro

Lens	
Symbol	Description
28	2.8mm
36	3.6mm
37	3.7mm
VF	Vari-focal
MVF	Motorized VF (with auto focus)

AHD CAMERAS BASIC 720

DI-380AHDB36
DI-380AB36*



I1-380AB36



Image sensor	1/3" CMOS – 1,3MP (4:3)	1/3" CMOS – 1,3MP (4:3)
Effective pixels	1296X964	1296X964
Max. resolution	AHD: 280X720 CVBS:700 TVL	AHD: 280X720 CVBS:700 TVL
Day/night	ICR (True Day/Night)	ICR (True Day/Night)
Noise reduction	2D-DNR	2D-DNR
Min. illumination	0,01lux (0lux IR On)	0,01lux (0lux IR On)
Privacy mask	-	-
White balance	Auto	Auto
WDR	-	-
Motion detection	-	-
IR distance	15m (24 IR LED)	15m (24 IR LED)
Lens	3,6mm (69°)	3,6mm (69°)
Video output	AHD/CVBS selectable via DIP switch	AHD/CVBS selectable via DIP switch
OSD Menu	-	-
Power supply	DC12V±10%, ~220mA	DC12V±10%, ~220mA
Protection	-	-
Dimensions	Ø98X90mm	162,5x67,5x67,5mm
Operation temperature	-10°C / +50°C	-10°C / +50°C
Junction Box	PR-B42PJB - PR-B37JB PR-B45JB	PR-B42PJB - PR-B45JB PR-B37JB

AHD CAMERAS BASIC 1080

DI-390AB36



I1-390AB36



Image sensor	1/3" CMOS – 2MP (16:9)	1/3" CMOS – 2MP (16:9)
Effective pixels	1928X1088	1928X1088
Max. resolution	AHD: 1920X1080 CVBS:700 TVL	AHD: 1920X1080 CVBS:700 TVL
Day/night	ICR (True Day/Night)	ICR (True Day/Night)
Noise reduction	2D-DNR	2D-DNR
Min. illumination	0,1lux (0lux IR On)	0,1lux (0lux IR On)
Privacy mask	-	-
White balance	Auto / Manual	Auto / Manual
WDR	-	-
Motion detection	-	-
IR distance	15m (12 IR LED)	15m (12 IR LED)
Lens	3,6mm (69°)	3,6mm (69°)
Video output	PAL/NTSC - AHD/CVI/TVI/CVBS selectable via DIP switch	PAL/NTSC - AHD/CVI/TVI/CVBS selectable via DIP switch
OSD Menu	Available via CoC only	Available via CoC only
Power supply	DC12V±10%, ~210mA	DC12V±10%, ~210mA
Protection	-	IP66
Dimensions	Ø98X80mm	162.5X70X72mm
Operation temperature	-20°C / +45°C	-20°C / +45°C
Junction Box	PR-B42PJB - PR-B37JB PR-B45JB	PR-B42PJB - PR-B45JB PR-B37JB

*COMING SOON

AHD CAMERAS ECO 2MP



DI-390AE36



DI-390AEVF



I1-390AE36



I3-390AE36



I4-390AEVF



Image sensor	1/3" CMOS – 2MP (16:9)	1/3" CMOS – 2MP (16:9)	1/3" CMOS – 2MP (16:9)	1/3" CMOS – 2MP (16:9)	1/3" CMOS – 2MP (16:9)
Effective pixels	1928X1088	1928X1088	1928X1088	1928X1088	1928X1088
Max. resolution	AHD: 1920x1080P CVBS:700 TVL	AHD: 1920x1080P CVBS:700 TVL	AHD: 1920x1080P CVBS:700 TVL	AHD: 1920x1080P CVBS:700 TVL	AHD: 1920x1080P CVBS:700 TVL
Day/night	ICR (True Day/Night)	ICR (True Day/Night)	ICR (True Day/Night)	ICR (True Day/Night)	ICR (True Day/Night)
Noise reduction	2D-DNR	2D-DNR	2D-DNR	2D-DNR	2D-DNR
Min. illumination	0,01lux (0lux IR On)	0,01lux (0lux IR On)	0,01lux (0lux IR On)	0,01lux (0lux IR On)	0,01lux (0lux IR On)
Privacy mask	-	-	-	-	-
White balance	Auto-Manual	Auto-Manual	Auto-Manual	Auto-Manual	Auto-Manual
WDR	-	-	-	-	-
Motion detection	-	-	-	-	-
IR distance	15m (24 IR LED)	25m (36 IR LED)	15m (24 IR LED)	25m (36 IR LED)	35m (42 IR LED)
Lens	3,6mm (83°)	2,8-12mm (103°-27°)	3,6mm (83°)	3,6mm (83°)	2,8-12mm (103°-27°)
Video output	PAL/NTSC - AHD/CVI/TVI/CVBS selectable via DIP switch	PAL/NTSC - AHD/CVI/TVI/CVBS selectable via DIP switch	PAL/NTSC - AHD/CVI/TVI/CVBS selectable via DIP switch	PAL/NTSC - AHD/CVI/TVI/CVBS selectable via DIP switch	PAL/NTSC - AHD/CVI/TVI/CVBS selectable via DIP switch
OSD Menu	Available via CoC only	Available via CoC only	Available via CoC only	Available via CoC only	Available via CoC only
Power supply	DC12V±10%, ~280mA	DC12V±10%, ~360mA	DC12V±10%, ~190mA	DC12V±10%, ~360mA	DC12V±10%, ~380mA
Protection	IP66	IP66	IP66	IP66	IP66
Dimensions	104X70,8X93,2mm	129,5X790X119mm	104X70,8X93,2mm	206X67,6X68,5mm	286X77X85,6mm
Operation temperature	-30°C/+50°C	-30°C/+50°C	-30°C/+50°C	-30°C/+50°C	-30°C/+50°C
Junction Box	PR-B37JB - PR-B42PJB PR-B45JB	PR-B47JB+ - PR-B55JB	PR-B37JB - PR-B42PJB PR-B45JB	PR-B37JB - PR-B45JB	PR-B47JB+ - PR-B45JB

AHD CAMERAS PRO 2MP

NEW
BX-392AHD
BX-391A*

DI-390A28

DI-390A36

DI-390AVF (W)

DI-390AVF (G)



Image sensor	1/3" CMOS – 2MP (16:9)	1/3" CMOS – 2MP (16:9)	1/3" CMOS – 2MP (16:9)	1/3" CMOS – 2MP (16:9)	1/3" CMOS – 2MP (16:9)
Effective pixels	1984X1225	1984X1225	1984X1225	1984X1225	1984X1225
Max. resolution	AHD: 1920x1080P/ CVBS:700 TVL	AHD: 1920x1080P/ CVBS:700 TVL	AHD: 1920x1080P/ CVBS:700 TVL	AHD: 1920x1080P/ CVBS:700 TVL	AHD: 1920x1080P/ CVBS:700 TVL
Day/night	ICR (True Day/Night)	ICR (True Day/Night)	ICR (True Day/Night)	ICR (True Day/Night)	ICR (True Day/Night)
Noise reduction	3D-DNR , 2D-DNR per CVBS	3D-DNR , 2D-DNR per CVBS	3D-DNR , 2D-DNR per CVBS	3D-DNR , 2D-DNR per CVBS	3D-DNR , 2D-DNR per CVBS
Min. illumination	0,01lux (0lux IR On)	0,01lux (0lux IR On)	0,01lux (0lux IR On)	0,01lux (0lux IR On)	0,01lux (0lux IR On)
Privacy mask	On/Off (4 areas)	On/Off (4 areas)	On/Off (4 areas)	On/Off (4 areas)	On/Off (4 areas)
White balance	ATW, AWC, In/Out manual, AWB	ATW, AWC, In/Out manual, AWB	ATW, AWC, In/Out manual, AWB	ATW, AWC, In/Out manual, AWB	ATW, AWC, In/Out manual, AWB
WDR	-	-	-	-	-
Motion detection	On/Off (4 areas)	On/Off (4 areas)	On/Off (4 areas)	On/Off (4 areas)	On/Off (4 areas)
IR distance	-	15m (18 LED Wide Angle)	15m (2 LED Array)	20m (3 LED Array)	20m (3 LED Array)
Lens	CS MOUNT	2,8mm (105°)	3,6mm (76°)	2,8-12mm (95°-25°)	2,8-12mm (95°-25°)
Video output	AHD/CVBS selectable via DIP switch	PAL/NTSC - AHD/CVI/TVI/CVBS selectable via DIP switch	PAL/NTSC - AHD/CVI/TVI/CVBS selectable via DIP switch	PAL/NTSC - AHD/CVI/TVI/CVBS selectable via DIP switch	PAL/NTSC - AHD/CVI/TVI/CVBS selectable via DIP switch
OSD Menu	AHD/CVBS, Available via CoC only, 11 languages	Available via CoC only, 11 languages	Available via CoC only, 11 languages	Available via CoC only, 11 languages	Available via CoC only, 11 languages
Power supply	DC12V±10%, ~100mA	DC12V±10%, ~310mA	DC12V±10%, ~310mA	DC12V±10%, ~360mA	DC12V±10%, ~400mA
Protection	IP66	IP66	IP66	IP66	IP66
Dimensions	123,5x63,7x65mm	104x82x93,2mm	104X82X93,2mm	129,5X90X119mm	129,5X90X119mm
Operation temperature	-10°C/+50°C	-30°C/+50°C	-30°C/+50°C	-30°C/+50°C	-30°C/+50°C
Junction Box	-	PR-B37JB - PR-B42PJB PR-B45JB	PR-B37JB - PR-B42PJB PR-B45JB	PR-B47JB+ - PR-B55JB	PR-B47JB+ - PR-B55JB

*COMING SOON

AHD CAMERAS PRO 2MP



DAI-390AHDVF



DI-390AMVF



I3-390A36



I4-390AVF W/G



I4-390AMVF

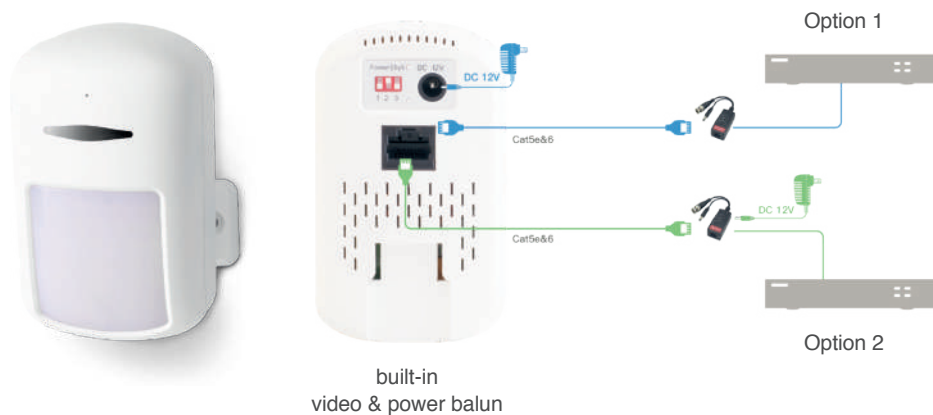


Image sensor	1/3" CMOS – 2MP (16:9)	1/3" CMOS – 2MP (16:9)	1/3" CMOS – 2MP (16:9)	1/3" CMOS – 2MP (16:9)	1/3" CMOS – 2MP (16:9)
Effective pixels	1928X1088	1984X1105	1984X1225	1984X1225	1984X1105
Max. resolution	AHD: 1920x1080P/ CVBS: 700 TVL	AHD: 1920x1080P/ ANALOG: 700 TVL	AHD: 1920x1080P/ ANALOG: 700 TVL	AHD: 1920x1080P/ ANALOG: 700 TVL	AHD: 1920x1080P/ ANALOG: 700 TVL
Day/night	ICR (True Day/Night)	ICR (True Day/Night)	ICR (True Day/Night)	ICR (True Day/Night)	ICR (True Day/Night)
Noise reduction	3D-DNR (AHD, CVI, TVI), 2D-DNR (CVBS)	3D-DNR (AHD), 2D-DNR (CVBS)	3D-DNR (AHD, CVI, TVI), 2D-DNR (CVBS)	3D-DNR (AHD, CVI, TVI), 2D-DNR (CVBS)	3D-DNR (AHD), 2D-DNR (CVBS)
Min. illumination	0,01lux (0lux IR On)	0lux IR On	0,01lux (0lux IR On)	0,01lux (0lux IR On)	0lux IR On
Privacy mask	On/Off (4 areas)	On/Off (4 areas)	On/Off (4 areas)	On/Off (4 areas)	On/Off (4 areas)
White balance	ATW, AWC, In/Out manual, AWB	ATW, AWC, In/Out manual, AWB	ATW, AWC, In/Out manual, AWB	ATW, AWC, In/Out manual, AWB	ATW, AWC, In/Out manual, AWB
WDR	-	-	-	-	-
Motion detection	On/Off (4 areas)	On/Off (4 areas)	On/Off (4 areas)	On/Off (4 areas)	On/Off (4 areas)
IR distance	20m (35 IR LED)	25m (3 LED ARRAY)	30m (3 LED ARRAY)	40m (4 LED ARRAY)	40m (4 LED ARRAY)
Lens	2,8-12mm (95°-25°)	2,8-12mm (92°-29°) Motorized VF with Auto Focus	3,6mm (76°)	2,8-12mm (95°-25°)	2,8-12mm (92°-29°) Motorized VF with Auto Focus
Video output	AHD/CVI/TVI/CVBS selectable via DIP switch	PAL/NTSC - AHD/CVI/TVI/CVBS selectable via DIP switch	PAL/NTSC - AHD/CVI/TVI/CVBS selectable via DIP switch	PAL/NTSC - AHD/CVI/TVI/CVBS selectable via DIP switch	PAL/NTSC - AHD/CVI/TVI/CVBS selectable via DIP switch
OSD Menu	Available via CoC only, 11 Languages	Available via CoC only, 11 Languages	Available via CoC only, 11 Languages	Available via CoC only, 11 Languages	Available via CoC only, 11 Languages
Power supply	DC12V±10%, ~250mA	DC12V±10%, ~400mA	DC12V±10%, ~410mA	DC12V±10%, ~480mA	DC12V±10%, ~480mA
Protection	IP66	IP66	IP66	IP66	IP66
Dimensions	145x119mm	129,5x119x104mm	206,5x67,6x68,5mm	286x77x85,6mm	286x77x85,6mm
Operation temperature	-30°C/+50°C	-30°C/+50°C	-30°C/+50°C	-30°C/+50°C	-30°C/+50°C
Junction Box	PR-B40DJB	PR-B47JB+ - PR-B55JB	PR-B37JB - PR-B45JB	PR-B47JB+ - PR-B45JB	PR-B47JB+ - PR-B45JB

NEW HIDDEN CAMERAS

IV-390A37-UTP

Make room to fit the new look of PIR detector, small and elegant, naturally blends in your home/office environment.
Equipped with a built-in video & power balun for maximum installation convenience - a single cat 5 cable can deliver both Video and Power.
Night vision with invisible 940nm IR LED (no red hue at night time).
Extra balun for DVR side is included.



MW-392A37

"Snake" type HD camera Advantage

Ideal for hidden installations.
With the smallest size possible, this pin-hole camera is especially designed for hidden purposes.
The sensor module is separate from the processing board to allow the minimum size possible.



AHD CAMERAS PRO (HIDDEN) 2MP

IV-390A37

NEW IV-390A37-UTP



Image sensor	1/3" – 2MP (16:9)	1/3" – 2MP (16:9)
Effective pixels	1928X1088	1984(H)×1225(V)
Max. resolution	AHD: 1920x1080P/ ANALOG: 700 TVL	Digital:1920x1080, Analog:960H
Day/night	ICR (True Day/Night)	ICR (True Day/Night)
Noise reduction	3D-DNR (AHD, CVI, TVI), 2D-DNR (CVBS)	3D-DNR (AHD, CVI, TVI), 2D-DNR (CVBS)
Min. illumination	0,01lux (0lux IR On)	0,01lux (0lux IR On)
Privacy mask	On/Off (4 areas)	On/Off (4 areas)
White balance	ATW, AWC, In/Out manual, AWB	ATW,AWC,Indoor,Outdoor,Manual,AWB
WDR	-	-
Motion detection	On/Off (4 areas)	On/Off (4 areas)
IR distance	10m (18 IR LED)	10m (36 IR LED)
Lens	3,7mm pinhole lens (78°)	3.7mm Pinhole Lens (83°)
Video output	PAL/NTSC - AHD/CVI/TVI/CVBS selectable via DIP switch	PAL/NTSC - AHD/CVI/TVI/CVBS selectable via DIP switch
OSD Menu	Available via CoC only, 11 Languages	Available via CoC only, 11 Languages
Power supply	DC12V±10%, ~212mA	DC12V±10%, ~310mA
Protection	-	-
Dimensions	104x60x66mm	95*69.5*58mm
Operation temperature	-10°C/+50°C	-20°C~+50°C
Junction Box	-	-

AHD CAMERAS PRO (HIDDEN) 2MP

NEW

MW-392A37

MC-392A37

DL-392A37

DS-392A37



Image sensor	1/3" – 2MP (16:9)	1/3" – 2MP (16:9)	1/3" – 2MP (16:9)	1/3" – 2MP (16:9)
Effective pixels	1984X1225	1984X1225	1984X1225	1984X1105
Max. resolution	AHD: 1920x1080P/ ANALOG: 700 TVL	AHD: 1920x1080P/ ANALOG: 700 TVL	AHD: 1920x1080P/ ANALOG: 700 TVL	AHD: 1920x1080P/ ANALOG: 700 TVL
Day/night	Yes	Yes	Yes	Yes
Noise reduction	3D-DNR For AHD / CVI / TVI, 2D-DNR For CVBS	3D-DNR (AHD, CVI, TVI), 2D-DNR (CVBS)	3D-DNR (AHD, CVI, TVI), 2D-DNR (CVBS)	3D-DNR (AHD), 2D-DNR (CVBS)
Min. illumination	0,01lux	0,01lux	0,01lux	0,01lux
Privacy mask	On/Off (4 areas)	On/Off (4 areas)	On/Off (4 areas)	On/Off (4 areas)
White balance	ATW,AWC,Indoor,Outdoor,Manual,AWB	ATW, AWC, In/Out manual, AWB	ATW, AWC, In/Out manual, AWB	ATW, AWC, In/Out manual, AWB
WDR	-	-	-	-
Motion detection	On/Off (4 areas)	On/Off (4 areas)	On/Off (4 areas)	On/Off (4 areas)
IR distance	-	-	-	-
Lens	3,7mm pinhole lens (78°)	3,7mm pinhole lens (78°)	3,7mm pinhole lens (78°)	3,7mm pinhole lens (78°)
Video output	AHD/CVI/TVI/CVBS selectable via DIP switch	AHD/CVI/TVI/CVBS selectable via DIP switch	AHD/CVI/TVI/CVBS selectable via DIP switch	AHD/CVI/TVI/CVBS selectable via DIP switch
OSD Menu	Available via CoC only, 11 Languages	Available via CoC only, 11 Languages	Available via CoC only, 11 Languages	Available via CoC only, 11 Languages
Power supply	DC12V±10%, ~80mA	DC12V±10%, ~72mA	DC12V±10%, ~72mA	DC12V±10%, ~72mA
Protection	-	-	-	-
Dimensions	Lens Mount: 14.75*14.75*9.5mm + 1m Cable	35x35x10mm	90x55mm	125x50mm
Operation temperature	-20°C~+50°C	-10°C/+50°C	-10°C/+50°C	-10°C/+50°C
Junction Box	-	-	-	-

AHD CAMERAS **ULTRA 2MP**

DI-391AHDU-MVF+
DI-391AU-MVF*



I4-391AHDU-MVF+
I4-391AU-MVF*



Image sensor	1/3" CMOS – 2MP (16:9)	1/3" CMOS – 2MP (16:9)
Effective pixels	1984X1105	1984X1105
Max. resolution	AHD: 1920x1080P ANALOG: 700 TVL	AHD: 1920x1080P ANALOG: 700 TVL
Day/night	ICR (True Day/Night)	ICR (True Day/Night)
Noise reduction	3D-DNR (AHD), 2D-DNR (CVBS)	3D-DNR (AHD), 2D-DNR (CVBS)
Min. illumination	0.001 Lux (0 Lux IR On)	0.001 Lux (0 Lux IR On)
Privacy mask	On/Off (4 areas)	On/Off (4 areas)
White balance	Auto, Manual, Auto-Push	Auto, Manual, Auto-Push
WDR	True WDR	True WDR
Motion detection	On/Off (4 areas)	On/Off (4 areas)
IR distance	25m (3 LED ARRAY)	40m (4 LED ARRAY)
Lens	2,8-12mm (100°-29°) Motorized VF with Auto Focus	2,8-12mm (90°-27°) Motorized VF with Auto Focus
Video output	AHD/CVI/TVI/CVBS selectable via DIP switch	AHD/CVI/TVI/CVBS selectable via DIP switch
OSD Menu	Available via CoC only	Available via CoC only
Power supply	DC12V±10%, ~400mA	DC12V±10%, ~480mA
Protection	IP66	IP66
Dimensions	129,5X90X119mm	286X77X85,6mm
Operation temperature	-30°C/+50°C	-30°C/+50°C
Junction Box	PR-B47JB+ - PR-B55JB	PR-B47JB+ - PR-B45JB

AHD CAMERAS **PRO 4MP**

DAI-340AHDVF+



IV-340AHD37+



Image sensor	1/3" CMOS – 4MP (16:9)	1/3" CMOS – 4MP (16:9)
Effective pixels	2688X1520	2688X1520
Max. resolution	2560x1440	2560x1440
Day/night	ICR (True Day/Night)	Digital: 2560x1440
Noise reduction	2D-DNR	2D-DNR
Min. illumination	0,01lux (0lux IR On)	0,01lux (0lux IR On)
Privacy mask	-	-
White balance	ATW, manual	ATW, manual
WDR	-	-
Motion detection	-	-
IR distance	20m (35 IR LED)	10m (18 IR LED)
Lens	2,8-12mm (95°-28°)	3,7mm (72°)
Video output	AHD/CVI/TVI/CVBS selectable via DIP switch	AHD/CVI/TVI/CVBS selectable via DIP switch
OSD Menu	Available via CoC only, 12 Languages	Available via CoC only, 12 Languages
Power supply	DC12V±10%, ~250mA	DC12V±10%, ~212mA
Protection	IP66	-
Dimensions	145x119,5mm	145x119,5mm
Operation temperature	-30°C/+50°C	-30°C/+50°C
Junction Box	PR-B40DJB	-

*COMING SOON

AHD CAMERAS ECO 5MP



DI-250AE36



I1-250AE36



NEW
DI-250AEVF



NEW
I4-250AEVF



Image sensor	1/2.5" – 5MP (4:3)	1/2.5" – 5MP (4:3)	1/2.5" – 5MP (4:3)	1/2.5" – 5MP (4:3)
Effective pixels	2704X1950	2704X1950	2704X1950	2704X1950
Max. resolution	AHD: 2560X1936 ANALOG: 700 TVL	AHD: 2560X1936 ANALOG: 700 TVL	AHD: 2560X1936 ANALOG: 700 TVL	AHD: 2560X1936 ANALOG: 700 TVL
Day/night	ICR (True Day/Night)	ICR (True Day/Night)	ICR (True Day/Night)	ICR (True Day/Night)
Noise reduction	2D-DNR	2D-DNR	2D-DNR	2D-DNR
Min. illumination	0,01lux (0lux IR On)	0,01lux (0lux IR On)	0,01lux (0lux IR On)	0,01lux (0lux IR On)
Privacy mask	-	-	-	-
White balance	Auto / Manual	Auto / Manual	Auto / Manual	Auto / Manual
WDR	-	-	-	-
Motion detection	-	-	-	-
IR distance	15m (18 IR LED)	15m (18 IR LED)	30m (30 IR LED)	35m (30 IR LED)
Lens	3,6mm (69°)	3,6mm (69°)	2.8-12mm Mega-Pixel Vari-Focal Lens (34°-90°)	2.8-12mm Mega-Pixel Vari-Focal Lens (34°-90°)
Video output	PAL/NTSC - AHD/CVI (4mp only) TVI/CVBS selectable via DIP switch	PAL/NTSC - AHD/CVI (4mp only) TVI/CVBS selectable via DIP switch	PAL/NTSC - AHD/CVI (4mp only) TVI/CVBS selectable via DIP switch	PAL/NTSC - AHD/CVI (4mp only) TVI/CVBS selectable via DIP switch
OSD Menu	Available via CoC only	Available via CoC only	Available via CoC only	Available via CoC only
Power supply	DC12V±10%, ~230mA	DC12V±10%, ~230mA	DC12V±10%, ~470mA	DC12V±10%, ~540mA
Protection	IP66	IP66	IP66	IP66
Dimensions	Ø92X88mm	152X67.5X57.5mm	Ø120*108mm	Ø83*235.7mm
Operation temperature	-30°C/+50°C	-30°C/+50°C	-30°C/+50°C	-30°C/+50°C
Junction Box	PR-B37JB - PR-B42PJB PR-B45JB	PR-B37JB - PR-B42PJB PR-B45JB	PR-B47JB+V2	PR-B47JB+V2

AHD CAMERAS PRO 5MP

NEW
DI-350A28
COMING SOON



DI-350A36



DI-350AVF



I3-350A36



I4-350AVF



Image sensor	1/2.7" CMOS – 5MP (4:3)	1/2.7" CMOS – 5MP (4:3)	1/2.7" CMOS – 5MP (4:3)	1/2.7" CMOS – 5MP (4:3)	1/2.7" CMOS – 5MP (4:3)
Effective pixels	2592X1944	2592X1944	2592X1944	2592X1944	2592X1944
Max. resolution	5MP:2592x1944@20FPS	5MP:2592x1944@20FPS	5MP:2592x1944@20FPS	5MP:2592x1944@20FPS	5MP:2592x1944@20FPS
Day/night	ICR (True Day/Night)	ICR (True Day/Night)	ICR (True Day/Night)	ICR (True Day/Night)	ICR (True Day/Night)
Noise reduction	2D-DNR	2D-DNR	2D-DNR	2D-DNR	2D-DNR
Min. illumination	0,01lux (0lux IR On)	0,01lux (0lux IR On)	0,01lux (0lux IR On)	0,01lux (0lux IR On)	0,01lux (0lux IR On)
Privacy mask	-	-	-	-	-
White balance	ATW manual	ATW manual	ATW manual	ATW manual	ATW manual
WDR	Off/ BLC	Off/ BLC	Off/ BLC	Off/ BLC	Off/ BLC
Motion detection	-	-	-	-	-
IR distance	20m (2 IR LED Array)	20m (2 IR LED Array)	25m (3 IR LED Array)	30m (3 IR LED Array)	40m (4 IR LED Array)
Lens		3,6 mm (74°)	2,8-12 mm (91°- 25°)	3,6 mm (74°)	2,8-12 mm (91°- 25°)
Video output	PAL/NTSC - AHD/CVI/TVI/CVBS selectable via DIP switch	PAL/NTSC - AHD/CVI/TVI/CVBS selectable via DIP switch	PAL/NTSC - AHD/CVI/TVI/CVBS selectable via DIP switch	PAL/NTSC - AHD/CVI/TVI/CVBS selectable via DIP switch	PAL/NTSC - AHD/CVI/TVI/CVBS selectable via DIP switch
OSD Menu	Available via CoC only	Available via CoC only	Available via CoC only	Available via CoC only	Available via CoC only
Power supply	DC12V±10%, ~280mA	DC12V±10%, ~280mA	DC12V±10%, ~360mA	DC12V±10%, ~360mA	DC12V±10%, ~450mA
Protection	IP66	IP66	IP66	IP66	IP66
Dimensions	104x82x93,2mm	104x82x93,2mm	129,5x119x104mm	206,5x67,6x68,5mm	286x77x85,6mm
Operation temperature	-30°C/+50°C	-30°C/+50°C	-30°C/+50°C	-30°C/+50°C	-30°C/+50°C
Junction Box	PR-B37JB - PR-B42PJB PR-B45JB	PR-B37JB - PR-B42PJB PR-B45JB	PR-B47JB+ - PR-B55JB	PR-B37JB - PR-B45JB	PR-B47JB+ - PR-B45JB

AHD CAMERAS PRO 8MP

NEW
DI-280AMVF
COMING SOON



NEW
I4-280AMVF
COMING SOON



Image sensor	1/2.5" CMOS	1/2.5" CMOS
Effective pixels	3864(H)×2202(V)	3864(H)×2202(V)
Max. resolution	8MP: 3840x2160 @ 15FPS	8MP: 3840x2160 @ 15FPS
Day/night	ICR (True Day/Night)	ICR (True Day/Night)
Noise reduction	3D-DNR	3D-DNR
Min. illumination	0.1Lux (0 Lux with IR on)	0.1Lux (0 Lux with IR on)
Privacy mask	-	-
White balance	ATW, Manual	ATW, Manual
WDR	Off/ BLC	Off/ BLC
Motion detection	-	-
IR distance	25m (3 IR LED Array)	40m (4 IR LED Array)
Lens	2.7-13.5mm Motorized VF with Auto Focus - Control over CoC only	2.7-13.5mm Motorized VF with Auto Focus - Control over CoC only
Video output	AHD/TVI/CVI (4MP Only)/ CVBS + PAL/ NTSC (Selectable by DIP Switch)	AHD/TVI/CVI (4MP Only)/ CVBS + PAL/ NTSC (Selectable by DIP Switch)
OSD Menu	Available via CoC only	Available via CoC only
Power supply	DC12V±10%, ~360mA	DC12V±10%, ~450mA
Protection	IP66	IP66
Dimensions	129.5*119*104mm	286*77*85.6mm
Operation temperature	-30°C~+50°C	-30°C~+50°C
Junction Box	PR-B47JB	PR-B37JB

AHD CAMERAS ULTRA 5MP

NEW
DI-350AU-MVF



NEW
I4-350AU-MVF



Image sensor	1/2.8" CMOS	1/2.8" CMOS
Effective pixels	2592(H)×1944(V)	2592(H)×1944(V)
Max. resolution	5MP: 2560x1936 @	5MP: 2560x1936 @
Day/night	EXT, Color, B&W, Auto	EXT, Color, B&W, Auto
Noise reduction	2D-DNR	2D-DNR
Min. illumination	0.01Lux (0 Lux with IR on)	0.01Lux (0 Lux with IR on)
Privacy mask	-	-
White balance	ATW, Manual	ATW, Manual
WDR	Off/BLC/True WDR (120dB)	Off/BLC/True WDR (120dB)
Motion detection	-	-
IR distance	25m (3 IR LED Array)	40m (4 IR LED Array)
Lens	2.8-12mm Motorized with Auto-Focus (90°-34°)	2.8-12mm Motorized with Auto-Focus (90°-34°)
Video output	AHD / CVI (4MP Only) / TVI / CVBS + PAL/NTSC (Selectable by DIP switch)	AHD / CVI (4MP Only) / TVI / CVBS + PAL/NTSC (Selectable by DIP switch)
OSD Menu	Available via CoC only	Available via CoC only
Power supply	DC12V±10%, ~400mA	DC12V±10%, ~480mA
Protection	IP66	IP66
Dimensions	129.5*90*119mm	286*77*85.6mm
Operation temperature	-30°C~+50°C	-30°C~+50°C
Junction Box	PR-B47JB	PR-B47JB

AHD CAMERAS PTZ PRO 2MP



I5PT-390AX4



I5PT-390AX10



NEW
DAIPT-390AX4



NEW
MZ-10A-2(IR)



Z-20A-2(IR)



Image sensor	1/3" CMOS – 2MP (16:9)	1/3" CMOS – 2MP (16:9)	1/2.9" CMOS – 2MP	1/3" CMOS – 2MP (16:9)	1/2.8" CMOS – 2MP (16:9)
Effective pixels	1984X1105	1984X1105	1920x1080	1920x1080	1920x1080
Max. resolution	AHD/CVI/TVI - 1080P ANALOG: 700TVL	AHD/CVI/ TVI - 1080P ANALOG: 700TVL	2MP/1MP (AHD / TVI / CVI- 1920x1080) Analog 700TVL	2MP (AHD / TVI / CVI - 1920x1080)	2MP/1MP (AHD / TVI / CVI- 1920x1080) Analog 700TVL
Zoom/Lens	Optical zoom 4X / 2.8-12mm H: 81.2°(Wide) to 22.6°(Tele) V: 51.5°(Wide) to 12.8°(Tele)	Optical zoom 10X / 5.1-52mm H: 50.4°(Wide) to 5.4°(Tele) V: 29.7°(Wide) to 3°(Tele)	Optical zoom x4 (2.8-12mm) H:106°(Wide) to 51.8°(Tele) V: 51.5°(Wide) to 12.8°(Tele)	Optical zoom x10 (4.7-47mm) H: 54.7 (Wide) to 5.8 (Tele) V: 32.1 (Wide) to 3.3 (Tele)	Optical zoom 20X / 4.3-87mm H: 56.2° (Wide) to 3.1° (Tele) V: 33.4° (Wide) to 1.7° (Tele)
Min. illumination	0,01lux (0lux IR On)	0,01lux (0lux IR On)	0.01lux (0 Lux with IR On)	0,005 lux (0lux IR On)	0,01 lux (0lux IR On)
Motion detection	Yes	Yes	-	-	-
Pan/Tilt range	250° horizontal - 65° vertical	250° horizontal - 65° vertical	250° Pan/ 65° Tilt	360° (Endless)/ 180° (Auto Flip)	360° horizontal - 180° vertical
Pan/Tilt speed	12°/Sec (max. speed)	12°/Sec (max. speed)	Preset: 12°/Sec Manual: 0.5°~12°/Sec	Pan - 200°/Sec Tilt: 30°/Sec	Pan:350°/Sec-Tilt:120°/Sec
IR distance	50m (IR LED ARRAY)	50m (IR LED ARRAY)	10m IR SMD LED	60m IR LED	100m IR LED
Day&Night	ICR (Auto Day/Night)	ICR (Auto Day/Night)	Auto/Day/Night (ICR)	Auto/Day/Night (ICR)	ICR (Auto Day/Night)
Noise reduction	3D-DNR	3D-DNR	3D-DNR	3D-DNR	3D-DNR
Focus	Semi-auto	Semi-auto	Auto / Manual	Auto / Manual	Auto / Manual
PTZ control	RS485/COC	RS485/COC	RS485/COC	RS485/COC	RS485/COC
Video output	PAL/NTSC - AHD/CVI/TVI/CVBS Selectable by Preset	PAL/NTSC - AHD/CVI/TVI/CVBS Selectable by Preset	PAL/NTSC - AHD/CVI/TVI/CVBS	PAL/NTSC - AHD/CVI/TVI/CVBS Selectable by Preset	PAL/NTSC - AHD/CVI/TVI/CVBS Selectable by Preset
Protocols	PELCO D, COC	PELCO D, COC	PELCO D/ PELCO P, COC	PELCO D/ PELCO P, COC	PELCO D/ PELCO P, COC
Alarms	-	-	-	-	7 In / 2 Out
Operation temperature	-20°C/+50°C	-20°C/+50°C	-20°C~+60°C	-20~+60°C	-35°C/+50°C
Power supply	DC12V/2A	DC12V/2A	12VDC/1A (Not supplied)	DC12V/2A	DC24V/3A Power supply included
Dimensions	255X175X94mm	255X175X94mm	Ø110*90mm	208Lx251Hx136W	28x28x50,4mm
Protection	IP66	IP66	IP66, IK10	IP66	IP66
Junction box	-	-	page 70	page 70	page 70

DVR

DIGITAL VIDEO RECORDER

DVR systems are the “heart” of any CCTV installation.

All information streamed from the cameras accumulates into the DVR.

The DVR captures the video signal coming from the camera, converts and saves it in digital format. Therefore, when it comes down to the final video resolution, the DVR’s quality is as important as the cameras’.

Moreover, since all the recording data is saved and rewritten over and over on the DVR, it must be an extremely reliable and high standard product.

All of Provision-ISR DVR’s are designed and manufactured according to researched and practiced knowledge over many years of experience.

All DVRs use the advanced H.264-H265 video compression format to deliver maximum video quality, while using minimum storage volume.

Provision-ISR DVRs are made of the highest quality components and adapted to work in a wide-range of different conditions and applications.

All of our DVRs stand out for their “full feature” operating system with use friendly graphical interface running from its powerful processor.

Depending on the model, our DVRs include digital VGA and HDMI monitor out, analog video out, audio in/ out, RS-485 for PTZ control and alarm in/alarm out sockets.

The range of DVRs is also supported by a powerful network function for remote monitoring, full remote configuration and mobile device application for remote monitoring.

DYNAMIC HYBRID

Thanks to this new function we can decide how the analog channels have to work according to the installation needs. This way, we make this the installation totally dynamic.

SERIES

DVR 2MP LITE DVR 5 MP LITE DVR 8 MP LITE
DVR 2MP PRO DVR 5 MP PRO



DVR MODEL NAME INDEX

DVR S X	N° channels 0	Total fps # # #	Technology X	Resolution 0	Case type X X
S A	32	4 0 0	A	2	2 U
S H	16	2 0 0	A5	8L	1U

example

DVR Type	
Symbol	Description
SH	Standalone Dynamic Hybrid
SA	Standalone

Technology	
Symbol	Description
A	4 in 1
A5	4in1 with H.265 support

N° of channels	
Symbol	Description
4	4 Channels
8	8 Channels
16	16 Channels
32	32 Channels

Resolution	
Symbol	Description
2L	1080P Lite
2	1080p
5L	5MP Lite
5	5MP
8L	8MP Lite

Total FPS	
Symbol	Description
50	50 fps (PAL) / 60 fps (NTSC)
100	100 fps (PAL) / 120 fps (NTSC)
200	200 fps (PAL) / 240 fps (NTSC)
400	400 fps (PAL) / 480 fps (NTSC)
800	800 fps (PAL) / 960 fps (NTSC)

Case Type	
Symbol	Description
“none”	Small 1U case 1HDD support
MM	mini metal case 1HDD support
1U	1U case 2HDD support
1.5U	1.5U case 4HDD support
2U	2U case 8HDD support



HYBRID DVR | 2 MP LITE

SH-4100A-2L(MM)						SH-8100A-2L(MM)						SH-8200A-2L						SH-16200A-2L(MM)						SH-16400A-2L																	
																																									
																																									
Channels						5 Channels						9 Channels						10 Channels						18 Channels						20 Channels											
Hybrid Modes						HD Analog																																			
						IP																																			
						4 3 2 1 0 + + + + + 1 2 3 4 5						8 7 6 5 4 3 2 1 0 + + + + + + + + + 1 2 3 4 5 6 7 8 9						8 7 6 5 4 3 2 1 0 + + + + + + + + + 2 3 4 5 6 7 8 9 10						16 15 14 + + + 2 3 4						16 15 14 13 12 11 10 9 8 7 6 5 + + + + + + + + + + + 4 5 6 7 8 9 10 11 12 13 14 15											
Video output						HDMI: 1920x1080 (1080P) VGA: 1280x1024, 1024x768						HDMI: 1920x1080 (1080P) VGA: 1280x1024, 1024x768						HDMI: 1920x1080 (1080P) VGA: 1280x1024, 1024x768 CVBS (spot)						HDMI: 1920x1080 (1080P) VGA: 1280x1024, 1024x768 CVBS (spot)						HDMI: 1920x1080 (1080P) VGA: 1280x1024, 1024x768 CVBS (spot)											
						AHD						2MP Lite (928x960)@25FPS						2MP Lite (928x960)@12FPS						2MP Lite (928x960)@25FPS						2MP Lite (928x960)@12FPS						2MP Lite (928x960)@25FPS					
						CVBS						960H@25FPS						960H@25FPS						960H@25FPS						960H@25FPS						960H@25FPS					
						TVI/CVI						2MP Lite (928x960)@25FPS						2MP Lite (928x960)@12FPS						2MP Lite (928x960)@25FPS						2MP Lite (928x960)@12FPS						2MP Lite (928x960)@25FPS					
						IP						2MP (1920x1080)@25FPS						2MP (1920x1080)@25FPS						2MP (1920x1080)@25FPS						3MP@12FPS 2MP (1920x1080)@25FPS						2MP (1920x1080)@25FPS					
Video compression						H.264 High Profile						H.264 High Profile						H.264 High Profile						H.264 High Profile						H.264 High Profile											
Video Analytics						Yes						Yes						Yes						Yes						Yes											
Audio In/Out						1 RCA in / 1 RCA Out						1 RCA in / 1 RCA Out						1 RCA in / 1 RCA Out						1 RCA in / 1 RCA Out						1 RCA in / 1 RCA Out											
Alarm In/Out						IPC Only						IPC Only						IPC Only						IPC Only						IPC Only											
Playback (Local/Remote)						4/5 CH						8/4 CH						8/9 CH						16/16 CH						16/9 CH											
Backup format						AVI/DAT						AVI/DAT						AVI/DAT						AVI/DAT						AVI/DAT											
Browsers and WEB connection						IE, Safari, P2P, DDNS, IP						IE, Safari, P2P, DDNS, IP						IE, Safari, P2P, DDNS, IP						IE, Safari, P2P, DDNS, IP						IE, Safari, P2P, DDNS, IP											
OS						MacOS - Windows XP - Vista 7,8.1,10						MacOS - Windows XP - Vista 7,8.1,10						MacOS - Windows XP - Vista 7,8.1,10						MacOS - Windows XP - Vista 7,8.1,10						MacOS - Windows XP - Vista 7,8.1,10											
CMS						Windows CMS 3 - Mac CMS 2						Windows CMS 3 - Mac CMS 2						Windows CMS 3 - Mac CMS 2						Windows CMS 3 - Mac CMS 2						Windows CMS 3 - Mac CMS 2											
Hard Disk						1 SATA (6 TB Max)						1 SATA (6 TB Max)						1 SATA (8 TB Max)						1 SATA (6 TB Max)						1 SATA (8 TB Max)											
APP Smartphone/Tablet						Provision CAM2 (Android-iOS)						Provision CAM2 (Android-iOS)						Provision CAM2 (Android-iOS)						Provision CAM2 (Android-iOS)						Provision CAM2 (Android-iOS)											
Power supply						DC12V 2A (Power supply included)						DC12V 2A (Power supply included)						DC12V 2A (Power supply included)						DC12V 2A (Power supply included)						DC12V 2A (Power supply included)											
Dimensions						255x220x43mm						255x220x43mm						300x250x45mm						255x220x43mm						300x250x45mm											



VIDEO ANALYTICS

AHD cameras: Line Crossing (No direction choice), Sterile Area, Smart search.

IP cameras: Line Crossing (With direction choice), Sterile Area, Object Monitoring, Camera Tampering, Smart Search.

HYBRID DVR | 2 MP PRO

SH-16200A-2(2U)

SA-32400A-2(2U)



Onvif

Channels	20 Channels	32 Channels
Hybrid Modes	16 15 14 13 12 11 10 9 8 + + + + + + + + 4 5 6 7 8 9 10 11 12	-
Video output	HDMI: 1920x1080 (1080P) VGA: 1280x1024, 1024x768 CVBS (spot)	HDMI: 1920x1080 (1080P) VGA: 1280x1024, 1024x768 CVBS (spot)
Max. Recording	AHD 2MP (1920x1080)@12FPS	2MP (1920x1080)@12FPS
	CVBS 960H@25FPS	960H@25FPS
	TVI/CVI 2MP (1920x1080)@12FPS	2MP (1920x1080)@12FPS
	IP 3MP (1920x1080)@25FPS 2MP (1920x1080)@25FPS	-
Video compression	H.264 High Profile	H.264 High Profile
Video Analytics	Yes	-
Audio In/Out	16 RCA in + IPC / 1 RCA Out	16 RCA in / 4 RCA Out
Alarm In/Out	16 in / 4 Out+ IPC	416 in-4 Out
Playback (Local/Remote)	16/9 CH	16 CH
Backup format	AVI/DAT	AVI/DAT
Browsers and WEB connection	IE, Safari, P2P, DDNS, IP	IE, Safari, P2P, DDNS, IP
OS	MacOS - Win. XP - Vista 7,8.1,10	MacOS - Win. XP - Vista 7,8.1,10
CMS	Windows CMS 3Mac CMS 2	Windows CMS 3 Mac CMS 2
Hard Disk	8 SATA (8 TB Max each) with smart management	8 SATA (8 TB Max each) with smart management
APP Smartphone/Tablet	Provision CAM2 (Android-iOS)	Provision CAM2 (Android-iOS)
Power supply	AC110-220V (Power supply included)	AC110-220V
Dimensions	430x450x89mm	430x450x89mm

HYBRID DVR | 5 MP LITE

SH-4050A5-5L (MM)

SH-4050A5-5L



Onvif

Onvif

Channels	6 Channels	6Channels
Hybrid Modes	HD Analog 4 3 2 1 0 + + + + + 2 3 4 5 6	4 3 2 1 0 + + + + + 2 3 4 5 6
Video output	HDMI: 1920x1080 (1080P) VGA: 1280x1024, 1024x768 CVBS (spot)	HDMI: 1920x1080 (1080P) VGA: 1280x1024, 1024x768 CVBS (spot)
Max. Recording	AHD 5MP Lite (1280x1936)@10FPS 2MP (1920x1080)@12FPS	5MP Lite (1280x1936)@10FPS 2MP (1920x1080)@12FPS
	CVBS 960H@25FPS	960H@25FPS
	TVI/CVI 5MP Lite (1280x1936)@10FPS 2MP (1920x1080)@12FPS	5MP Lite (1280x1936)@10FPS 2MP (1920x1080)@12FPS
	IP 5MP@25FPS	5MP@25FPS
Video compression	H.264 - H.265	H.264 - H.265
Video Analytics	Yes	Yes
Audio In/Out	1 RCA in + IPC / 1 RCA Out	4 RCA in + IPC / 1 RCA Out
Alarm In/Out	IPC Only	4 in + IPC / 1 Out + IPC
Playback (Local/Remote)	4 CH	4 CH
Backup format	AVI/DAT	AVI/DAT
Browsers and WEB connection	IE, Safari, P2P, DDNS, IP	IE, Safari, P2P, DDNS, IP
OS	MacOS - Windows XP - Vista 7,8.1,10	MacOS - Windows XP - Vista 7,8.1,10
CMS	Windows CMS 3 - Mac CMS 2	Windows CMS 3 - Mac CMS 2
Hard Disk	1 SATA (8 TB Max)	1 SATA (8 TB Max)
APP Smartphone/Tablet	Provision CAM2 (Android-iOS)	Provision CAM2 (Android-iOS)
Power supply	12V/2A (Power supply included)	12V/2A (Power supply included)
Dimensions	255x220x43mm	300x250x45mm



VIDEO ANALYTICS

AHD cameras: Line Crossing (No Direction Choice), Sterile Area, Smart search.

IP cameras: Line Crossing (With Direction Choice), Sterile Area, Object Monitoring, Camera Tampering, Smart Search.

HYBRID DVR | 5 MP LITE

SH-8100A5-5L(MM)



Onvif

SH-8100A5-5L



Onvif

SH-16200A5-5L(MM)



Onvif

SH-16200A5-5L(1U)



Onvif

SH-32400A5-5L(1.5U)



Onvif

Channels	12 Channels	12 Channels	24 Channels	24 Channels	40 Channels
Hybrid Modes	8 7 6 5 4 3 2 1 0 + + + + + + + + 4 5 6 7 8 9 10 11 12	8 7 6 5 4 3 2 1 0 + + + + + + + + 4 5 6 7 8 9 10 11 12	16 15 14 13 12 11 10 9 8 + + + + + + + + 8 9 10 11 12 13 14 15 16	16 15 14 13 12 11 10 9 8 + + + + + + + + 8 9 10 11 12 13 14 15 16	32 31 30 29 28 27 26 25 24 + + + + + + + + 8 9 10 11 12 13 14 15 16
Video output	HDMI: 1920x1080 (1080P) VGA: 1280x1024, 1024x768 CVBS (spot)	HDMI: 1920x1080 (1080P) VGA: 1280x1024, 1024x768 CVBS (spot)	HDMI: 1920x1080 (1080P) VGA: 1280x1024, 1024x768 CVBS (spot)	HDMI: 1920x1080 (1080P) VGA: 1280x1024, 1024x768 CVBS (spot)	HDMI: 1920x1080 (1080P) VGA: 1280x1024, 1024x768 CVBS (spot)
Max. Recording	AHD	5MP Lite (1280x1936)@10FPS 2MP (1920x1080)@12FPS	5MP Lite (1280x1936)@10FPS 2MP (1920x1080)@12FPS	5MP Lite (1280x1936)@10FPS 2MP (1920x1080)@12FPS	5MP Lite (1280x1936)@10FPS 2MP (1920x1080)@12FPS
	CVBS	960H@25FPS	960H@25FPS	960H@25FPS	960H@25FPS
	TV/CVI	5MP Lite (1280x1936)@10FPS 2MP (1920x1080)@12FPS	5MP Lite (1280x1936)@10FPS 2MP (1920x1080)@12FPS	5MP Lite (1280x1936)@10FPS 2MP (1920x1080)@12FPS CVI 4 MP Lite/2MP @12FPS	5MP Lite (1280x1936)@10FPS 2MP (1920x1080)@12FPS CVI 4 MP Lite/2MP @12FPS
	IP	5MP@25FPS	5MP@25FPS	5MP@25FPS	5MP@25FPS
Video compression	H.264 - H.265	H.264 - H.265	H.264 - H.265	H.264 - H.265	H.264 - H.265
Video Analytics	Yes	Yes	Yes	Yes	Yes
Audio In/Out	1 RCA in + IPC / 1 RCA Out	8 RCA in + IPC / 1 RCA Out	1 RCA in + IPC / 1 RCA Out	8 RCA in + IPC / 1 RCA Out	16 RCA in + IPC / 1 RCA Out
Alarm In/Out	IPC Only	8 in + IPC / 2 Out + IPC	IPC Only	16 in + IPC / 4 Out + IPC	16 in-4 Out
Playback (Local/Remote)	8 CH	8 CH	16 CH	16 CH	16CH
Backup format	AVI/DAT	AVI/DAT	AVI/DAT	AVI/DAT	AVI/DAT
Browsers and WEB connection	IE, Safari, P2P, DDNS, IP	IE, Safari, P2P, DDNS, IP	IE, Safari, P2P, DDNS, IP	IE, Safari, P2P, DDNS, IP	IE, Safari, P2P, DDNS, IP
OS	MacOS - Windows XP - Vista 7,8.1,10	MacOS - Windows XP - Vista 7,8.1,10	MacOS - Windows XP - Vista 7,8.1,10	MacOS - Windows XP - Vista 7,8.1,10	MacOS - Win. XP - Vista 7,8.1,10
CMS	Windows CMS 3 - Mac CMS 2	Windows CMS 3 - Mac CMS 2	Windows CMS 3 - Mac CMS 2	Windows CMS 3 - Mac CMS 2	Windows CMS 3 - Mac CMS 2
Hard Disk	1 SATA (8 TB Max)	1 SATA (8 TB Max) 1 ESATA Port	1 SATA (6 TB Max)	2 SATA (8 TB Max each) with smart management, 1 ESATA Port	4 SATA (8 TB Max each) with smart management
APP Smartphone/Tablet	Provision CAM2 (Android-iOS)	Provision CAM2 (Android-iOS)	Provision CAM2 (Android-iOS)	Provision CAM2 (Android-iOS)	Provision CAM2 (Android-iOS)
Power supply	12V/2A (Power supply included)	12V/2A (Power supply included)	12V/2A (Power supply included)	12V/4A (Power supply included)	AC110-220V
Dimensions	255x220x43mm	300x250x45mm	255x220x43mm	375x275x45mm	440X390X80mm



VIDEO ANALYTICS

AHD cameras: Line Crossing (No Direction Choice), Sterile Area, Smart search.

IP cameras: Line Crossing (With Direction Choice), Sterile Area, Object Monitoring, Camera Tampering, Smart Search.

HYBRID DVR | 5 MP PRO

SH-32400A-5(2U)



ONVIF

Channels		
Hybrid Modes	HD Analog	32
	IP	4
Video output	HDMI1: 4K HDMI2: 1920x1080 (1080P) VGA: 1280x1024, 1024x768 CVBS (spot)	
	AHD	5MP@10FPS 2MP (1920x1080)@25FPS
	CVBS	960H@25FPS
	TVI/CVI	5MP@10FPS 2MP (1920x1080)@25FPS
	IP	4MP@25FPS
Max. Recording		
Video compression		
H.264 High Profile		
Video Analytics		
Yes		
Audio In/Out		
16CH RCA in / 1CH RCA out		
Alarm In/Out		
16CH + IPC in / 4CH + IPC out		
Playback (Local/Remote)		
16CH / 9CH		
Backup format		
AVI/DAT		
Browsers and WEB connection		
IE, Safari, P2P, DDNS, IP		
OS		
MacOS - Windows XP - Vista 7,8,1,10		
CMS		
Windows CMS 3 - Mac CMS 2		
Hard Disk		
8 SATA (8 TB Max each) with smart management		
APP Smartphone/Tablet		
Provision CAM2 (Android-iOS)		
Power supply		
AC110V/220V		
Dimensions		
430x450x89mm		

HYBRID DVR | 8 MP LITE

SH-4050A5-8L(MM)



ONVIF

4K

Channels		
6 Channels		
Hybrid Modes	HD Analog	4 3 2 1 0
	IP	2 3 4 5 6
Video output	HDMI1: 4K HDMI2: 1920x1080 (1080P) VGA: 1280x1024, 1024x768 CVBS (spot)	
	AHD	8MP Lite (1920x2160)@12FPS 5 MP @12FPS
	CVBS	960H@25FPS
	TVI/CVI	8MP Lite (1920x2160)@12FPS 5 MP @12FPS / CVI 4 MP@12FPS
	IP	8MP@25FPS
Max. Recording		
Video compression		
H.265/ H.264		
Video Analytics		
Yes		
Audio In/Out		
1 + depends on IPC 1 RCA		
Alarm In/Out		
IPC Only		
Playback (Local/Remote)		
4 CH		
Backup format		
AVI/DAT		
Browsers and WEB connection		
IE, Safari, P2P, DDNS, IP		
OS		
MacOS - Windows XP - Vista 7,8,1,10		
CMS		
Windows CMS 3 - Mac CMS 2		
Hard Disk		
1 SATA (8 TB Max)		
APP Smartphone/Tablet		
Provision CAM2 (Android-iOS)		
Power supply		
12V/2A (Power supply included)		
Dimensions		
255x220x43mm		

SH-4050A5-8L



ONVIF

4K



VIDEO ANALYTICS

AHD cameras: Line Crossing (No Direction Choice), Sterile Area, Smart search.

IP cameras: Line Crossing (With Direction Choice), Sterile Area, Object Monitoring, Camera Tampering, Smart Search.

HYBRID DVR | 8 MP LITE

SH-8100A5-8L(MM)



Onvif



SH-8100A5-8L(1U)



Onvif



SH-16200A5-8L(1U)



Onvif



Channels		16 Channels										16 Channels										24 Channels																																																																																																																																																																																																																																																																																																																																																																																																																																																																																																																																																																																																																																																																																																																																																																																																																																																																																																																																																																																																																																																																																																																																																																																																																																																																																																																																																																																	
Hybrid Modes	HD Analog	8	7	6	5	4	3	2	1	0																																																																																																																																																																																																																																																																																																																																																																																																																																																																																																																																																																																																																																																																																																																																																																																																																																																																																																																																																																																																																																																																																																																																																																																																																																																																																																																																																																																													</



VIDEO ANALYTICS

AHD cameras: Line Crossing (No Direction Choice), Sterile Area, Smart search.

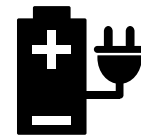
IP cameras: Line Crossing (With Direction Choice), Sterile Area, Object Monitoring, Camera Tampering, Smart Search.

ONE STOP SHOP

Provision-ISR is a One-Stop-Shop for all CCTV product needs. We have managed to create a full range of CCTV accessories (monitors, power supplies, brackets, junction boxes, connectors, baluns...) matching all types of CCTV installation. We understand the need for tested and reliable CCTV accessories and set high quality standards to all products.



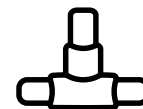
Monitor



Power supply



Brackets
&
Junction boxes



Connectors

USB ALARM BOX IO-1606

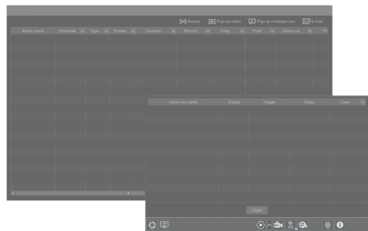
NEW

Recording device with no alarms? No available alarm ports?
No problem!

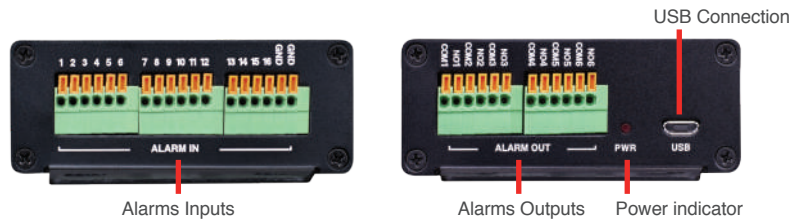


Simply expand your device's alarm capabilities using our plug and play IO-1606 alarm box!
All you need to do is to plug the alarm box to the device using the supplied USB cable and immediately get additional 16 alarms in and 6 alarms out!

Without IO-1606



With IO-1606



Specifications

Connectivity	Alarm Input	IO-1606
	Alarm Output	16 Dry contacts
	Connection Interface	6 Dry contacts
	Power Supply	Micro USB
	Power Consumption	5VDC/1A
Housing	Bracket	<5W
	Dimensions	Wall Mount
	Weight(gross)	140mmx74mmx29mm
	Work Environment	180g

Compatibility

DVRs	
All	All with Ossia v1.3.4 and up
NVRs	
NVR5-4100X+(MM)	Supported from Production
NVR5-4100PX+(MM)	
NVR5-8200X+(MM)	
NVR5-8200PX+(MM)	
NVR8-16400PF(1.5U)	
NVR8-32800F-16P(2U)	Supported from v1.4.1 (Future Version)
NVR8-32800F(2U)	
NVR8-16400A(1U)	
NVR8-16400F(1U)	

PR-HDMItoVGA



PR-HDEx(4K)



ACCESSORIES HDMI

HDMI TO VGA CONVERTER

- Supports: all HD format up to 1080P @ 30 fps
- Support HDMI 1.4b
- No support of HDMI audio (Will be lost)
- No power required

HDMI REPEATER

- Supports: all HD format up to 4K @ 30 fps.
- Support HDMI 1.4b
- Support up to 40 meters total transmission distance (AWG 26 cable standard)
- 1080P resolution:
 - Input: up to 15 meters, Output: up to 25 meters
- 4K resolution:
 - Input: up to 5 meters, Output: up to 8 meters
- Note:
 - working distance may be affected by the cable quality and length
- No power required

PR-SP102(4K)



PR-SP104(4K)



ACCESSORIES HDMI

1 TO 2 HDMI SPLITTER

- Split 1 HDMI input to 2 HDMI outputs
- Support HDMI resolution up to 4K@30Hz
- Support digital audio format: DTS-HD/Dolby-true HD/DTS/ Dolby-AC3/DSD/HD(HBR)
- Supported HDMI cable distance: (AWG 26 cable standard)
- 1080P resolution:
 - Input: up to 15 meters. Output: up to 15 meters.
- 4K resolution:
 - Input: up to 8 meters. Output: up to 8 meters
- Note: Working distance may be affected by the cable quality and length
- DC5V power supply needed (USB Power cable included)

1 TO 4 HDMI SPLITTER

- Split 1 HDMI input to 4 HDMI outputs
- Support HDMI resolution up to 4K@30Hz
- Support digital audio format: DTS-HD/Dolby-true HD/ DTS/ Dolby-AC3/ DSD/ HD(HBR)
- Supported HDMI cable distance: (AWG 26 cable standard)
- 1080P resolution:
 - Input: up to 15 meters. Output: up to 15 meters.
- 4K resolution:
 - Input: up to 8 meters. Output: up to 8 meters.
- Note: Working Distance may be affected by the cable quality and length
- Include DC5V power supply

PR-SW301(4K)**3 TO 1 HDMI SWITCHER**

- Compatible with HDMI 1.4a.
- Support up to 4K@30Hz.
- Deep color 12bit per channel
- "Smart switching" function that can detect live HDMI signal in different channels and switch to it automatically
- No power supply required for standard installation. If the HDMI output cable exceeds 5m – a CD5V power supply will be required (Not included)

PR-AHD-Con**AHD TO HDMI/VGA/BNC CONVERTER**

- HDMI output compatible with HDCP, HDMI1.4
- HDMI output resolutions: 720P@50/60Hz, 1080P@50/60Hz
- VGA output resolutions:
- 800x600@60Hz, 1024x768@60Hz, 1366x768@60Hz, 1280x720@60Hz, 1920x1080@60Hz
- Selectable output by physical button on the device
- Supports both NTSC/PAL Video inputs –Automatic detection
- Maximum output distance: HDMI: 20 meters, VGA: 5 meters, CVBS: 500 meters
- Note: Working Distance may be affected by the cable quality and length.

PR-4In1-Con**4 IN1 HD SIGNAL CONVERTOR**

- Converts AHD/TVI/CVI/CVBS signal to HDMI/VGA/BNC standard display outputs.
- Support 720P/1080P/4MP/5MP HD Analog Input
- HDMI output compatible with HDCP, HDMI1.4
- HDMI output resolutions: 720P@50/60Hz, 1080P@50/60Hz
- VGA output resolutions: 800x600@60Hz, 1024x768@60Hz, 1366x768@60Hz, 1280x720@60Hz, 1920x1080@60Hz
- Selectable output and resolution by a physical button on the device
- Supports both NTSC/PAL Video inputs –Automatic detection
- Maximum output distance: HDMI: 20 meters, VGA: 5 meters, CVBS: 500 meters

PR-HDoNet-E**HDMI OVER NETWORK EXTENDER**

- Transmit HDMI signal over Ethernet cable
- Working distance: Up to 10m distance over cat5e cable. Up to 20m over Cat6 cable
- HDMI 1.3&3D support
- Support video resolution of up to 1080P@60Hz

PR-HDoNet+**HDMI OVER NETWORK EXTENDER**

- Transmit HDMI signal over Ethernet cable
- Working distance: Up to 40m distance over cat5e cable. Up to 60m over Cat6 cable
- HDMI 1.3&3D support
- 12Bit deep color and bandwidth of up to 225Mhz support
- Support video resolution of up to 1080P@60Hz
- Supported Audio formats: DTS-HD/Dolby-true HD/LPCM7.1/DTS/Dolby-AC3/DSD
- DC5V power supply included

PR-HDKVMoNet**HDMI USB KVM EXTENDER OVER CAT5E/CAT6**

- Working distance:
- Up to 100m distance over cat5e cable
- Up to 130m over Cat6 cable
- HDMI1.3 & 3D Support
- 12Bit deep color and bandwidth of up to 225Mhz support
- Support video resolution of up to 1080P@60Hz
- Supported Audio formats: DTS-HD/Dolby-trueHD/LPCM7.1/DTS/DolbyAC3/DSD
- Support USB2.0 Keyboard and mouse transmission
- Support IR signal transmission
- DC5V power supplies included

PTR-101V-HD+

**1CH HD VIDEO PASSIVE BALUN**

- 1Ch Set
- 4MP 4in1 support: AHD / CVI / TVI / CVBS Passive - No Power Required
- Minimal Attenuation
- Light Weight

PTR-102VP-HD+

**1CH HD VIDEO + POWER PASSIVE BALUN**

- 1Ch Set
- 5MP 4in1 support: AHD / CVI / TVI / CVBS Passive
- Minimal Attenuation
- Light Weight

PTR-401V-HD

**4CH HD PASSIVE BALUN**

- 4Ch Unit
- 5MP 4in1 support: AHD / CVI / TVI / CVBS Passive - No Power Required
- Surge Protection
- Minimal Attenuation
- Light Weight

PTR-103VHP-HD

**1CH HD VIDEO + HIGH POWER PASSIVE BALUN**

- 1Ch Set
- 5MP 4in1 support: AHD / CVI / TVI / CVBS
- High-Power input 12-36VDC - 12VDC Stable Output
- Minimal Attenuation
- Light Weight

PTR-401VHP-HD

**4CH HD VIDEO + HIGH POWER PASSIVE BALUN**

- 4Ch Set
- 5MP 4in1 support: AHD / CVI / TVI / CVBS High-Power input - 12VDC Stable Output Plug and Play
- Passive
- Minimal Attenuation
- Light Weight Camera Side Unit

Technology max. distance

Technology Resolution	AHD	CVI	TVI
720P	320m	440m	250m
1080P	200m	230m	200m
4MP	180m		180m
5MP	180m		180m

Power transmission max. distance

Power Supply Power Consumption	DV 24V	DC 36V
200mA	400m	500m
300mA	350m	400m
400mA	300m	350m
500mA	240m	300m
600mA	190m	250m

* PTR-103VHP-HD - PTR-401VHP-HD

TM-43AHDBL



TM-43in1BL



TM-54in1-2



TM-54in1-5

**4.3" TFT LCD TEST MONITOR**

- Supported Video formats: 1MP /2MP AHD / CVBS
- Image settings support
- Installation without external Power Source
- 12VDC Output (Plug Supplied)
- 5VDC Output (Micro USB Plug Supplied)
- Network Cable Tester Included
- Audio in with Built-in Speaker
- PAL/NTSC Support
- Status LED Indicators
- Built-In Long-Life Rechargeable Battery
- Hands Free Operation (Arm strap supplied)

5" TFT LCD TEST MONITOR

- 2MP 4 in 1 support: AHD / CVI /TVI / CVBS
- BNC / VGA Input
- Image settings support
- Installation without external Power Source
- 12VDC Output (Plug Supplied)
- 5VDC Output (Micro USB Plug Supplied)
- Coax / Network Cable Tester Included
- Audio in with Built-in Speaker
- PAL/NTSC Support
- Status LED Indicators
- Built-In Long-Life rechargeable battery
- Hands Free Operation (Arm strap supplied)

5" TFT LCD TEST MONITOR

- 2MP 4in1 support: AHD / CVI /TVI / CVBS
- BNC x 1, VGAx 1 Input
- Image settings support
- 12VDC Output (Plug Supplied)
- 5VDC Output (Micro USB Plug Supplied)
- Audio in with Built-in Speaker
- PAL/NTSC Support
- Status LED Indicators
- Built-In Long-Life Rechargeable Battery
- Hands Free Operation (Arm strap supplied)
- Light Weight

5" TFT LCD TEST MONITOR

- 5MP 4in1 support: AHD / CVI /TVI / CVBS
- HDMI x 1, BNC x 1, VGA x 1 Input
- Image settings support
- 12VDC Output (Plug Supplied)
- 5VDC Output (Micro USB Plug Supplied)
- Audio in with Built-in Speaker
- PAL/NTSC Support
- Status LED Indicators
- Built-In Long-Life Rechargeable Battery
- Hands Free Operation (Arm strap supplied)
- Light Weight

PR-IPS7



PR-TFT9HD



PR-IPS10P-W

**ULTRA THIN****ULTRA THIN****ULTRA THIN****TFT 7" DIGITAL MONITOR**

- Screen Size: 7" TFT Screen
- Resolution: 1024x600
- TV System: PAL / NTSC
- Power Supply: DC 12V, 1A (Power supply not included)
- Video Input: 1VP-P, 75Ohm
- Inputs: AV1, AV2, Power
- Work Temperature: -10°C ~ 60°C
- Viewing Angle: 85° (All Directions)
- Contrast Ratio: 300:01:00
- Brightness: 260CD/m2
- Weight: 0.80Kg
- Dimension: 177W x 117H x 15D mm

TFT 9" DIGITAL MONITOR

- Screen Size: 9" TFT Screen
- Resolution: 1024x600
- TV System: PAL / NTSC
- Power Supply: DC 12V, 1A (Power supply not included)
- Video Input: 1VP-P, 75Ohm
- Inputs: AV1, AV2, Power
- Work Temperature: -10°C ~ 60°C
- Viewing Angle: 70°/70°/70°/50° (L/R/U/D)
- Contrast Ratio: 300:01:00
- Brightness: 260CD/m2
- Weight: 0.85Kg
- Dimension: 220W x 140H x 16D mm

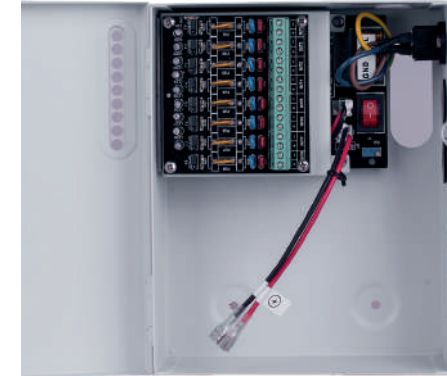
TFT 10" DIGITAL MONITOR

- Screen Size: 10" TFT Screen
- Resolution: 1024x600
- TV System: PAL / NTSC
- Power Supply: DC 12V, 1A (Power supply not included)
- Video Input: 1VP-P, 75Ohm
- Inputs: AV1, AV2, VGA, HDMI, Power
- Work Temperature: -10°C ~ 60°C
- Viewing Angle: 85° (All Directions)
- Contrast Ratio: 300:01:00
- Brightness: 260CD/m2
- Weight: 1.2Kg
- Dimension: 250W x 163H x 16D mm

POWER SUPPLY

MAIN FEATURES

- High efficiency and environmental friendly design
- Optimal design for easy installation
- Stable power signal to support clear images
- Over-current protection
- "Over-voltage" output protection
- Short circuit protection
- Lock
- Individual Status LED for each Channel
- Thermal Fuses
- Backup Battery Support



PR-12V1A-A



POWER SUPPLY 12V 1A

PR-12V3A



POWER SUPPLY 12V 3A

PR-12V5A



POWER SUPPLY 12V 5A

PR-12V5A-4



POWER SUPPLY 12V 5A + 4 SPLITTER

PR-12V5A-4T



TERMINAL BLOCK 12VDC 5A POWER SUPPLY
110V/220V AC POWER INPUT

PR-24V1A-AC



POWER SUPPLY 24V DC 1A OUT

PR-24V1A-DC



POWER SUPPLY 24V DC 1A OUT WITH PLUG
110V/220V AC POWER INPUT

PR-24AC-12DC



INPUT: 20~30V AC
OUTPUT: 12V DC, 1.0 AMP
TRANSMISSION DISTANCE UP TO 500 (USING PR-24V1A-AC POWER SUPPLY)

PR-24DC-12DC



INPUT: 8~24V DC
OUTPUT: 12V DC, 1.0 AMP
TRANSMISSION DISTANCE UP TO 150M (USING PR-24V1A POWER SUPPLY)



PR-5A8CH



8CH POWER SUPPLY
12V 5A WITH POWER SOCKET
8 PORTS

PR-5A8CH-B



8CH POWER SUPPLY
12V 5A WITH POWER SOCKET
BATTERY UP TO 7 AH - 8 PORTS

PR-10A9CH



9CH POWER SUPPLY
12V 10A
9 PORTS

PR-10A9CH-B



9CH POWER SUPPLY
12V 10A WITH POWER SOCKET
BATTERY UP TO 17 AH - 9 PORTS

PR-12A16CH



16CH POWER SUPPLY
12V 12A WITH POWER SOCKET
16 PORTS

PR-20A16CH (1U)



16CH POWER SUPPLY
12V 20A -1U CASE
16 PORTS

ACCESSORIES

Brackets & Junction boxes IP/AHD

PR-B45JB



Small water-proof junction box suitable for bullet and dome Fixed Lens Camera

PR-B55JB



Large water-proof junction box suitable for bullet and dome Vari-Focal Cameras

PR-B05DWB



Wall bracket for IP Cameras
DMAxxx
DAI+xxxIP36
DI-xxxIP28/36

PR-B50JB



Junction box suitable for FEI-xxx

PR-B50PB



Suitable for waterproof junction boxes (PR-B45JB, PR-B55JB, PR-B50JB, PR-B10JB+)

PR-B50ECB



Suitable for waterproof junction boxes (PR-B45JB, PR-B55JB, PR-B50JB, PR-B10JB+)

PR-B10JB/+



Junction box suitable for I4 Bullet Vari-Focal Camera Anti Vandal Dome Fixed Lens Camera (DAI-XXXIP36)

PR-B10DWB



Wall Bracket suitable for Anti Vandal Dome Vari-Focal Camera (DAI-XXXIPVF)

PR-B10DJB/+



Junction box suitable for IP Anti-Vandal Camera with VF Lens (DAI-xxxAHDVF)

PR-B10SB+



Straight bracket for junction box

PR-B10LB+



"L" shaped bracket for junction box

PR-B10EX



10 cm extension for junction box

PR-B37JB



SMALL junction box suitable for AHA and IP Fixed Lens cameras (I1/I3-XXXAHD36 / DI-XXXAHD36)

PR-B47JB+



LARGE junction box suitable for AHD and IP Vari-Focal cameras (Es. I3/I4-xxxAHDxx / DI-xxxIPxVF)

PR-B40DJB



Junction box suitable for AHD Anti-Vandal Camera with VF Lens (DAI-xxxAHDVF)

PR-B42PJB/+



Small plastic junction box

PR-B55BC



base for PR-B55JB

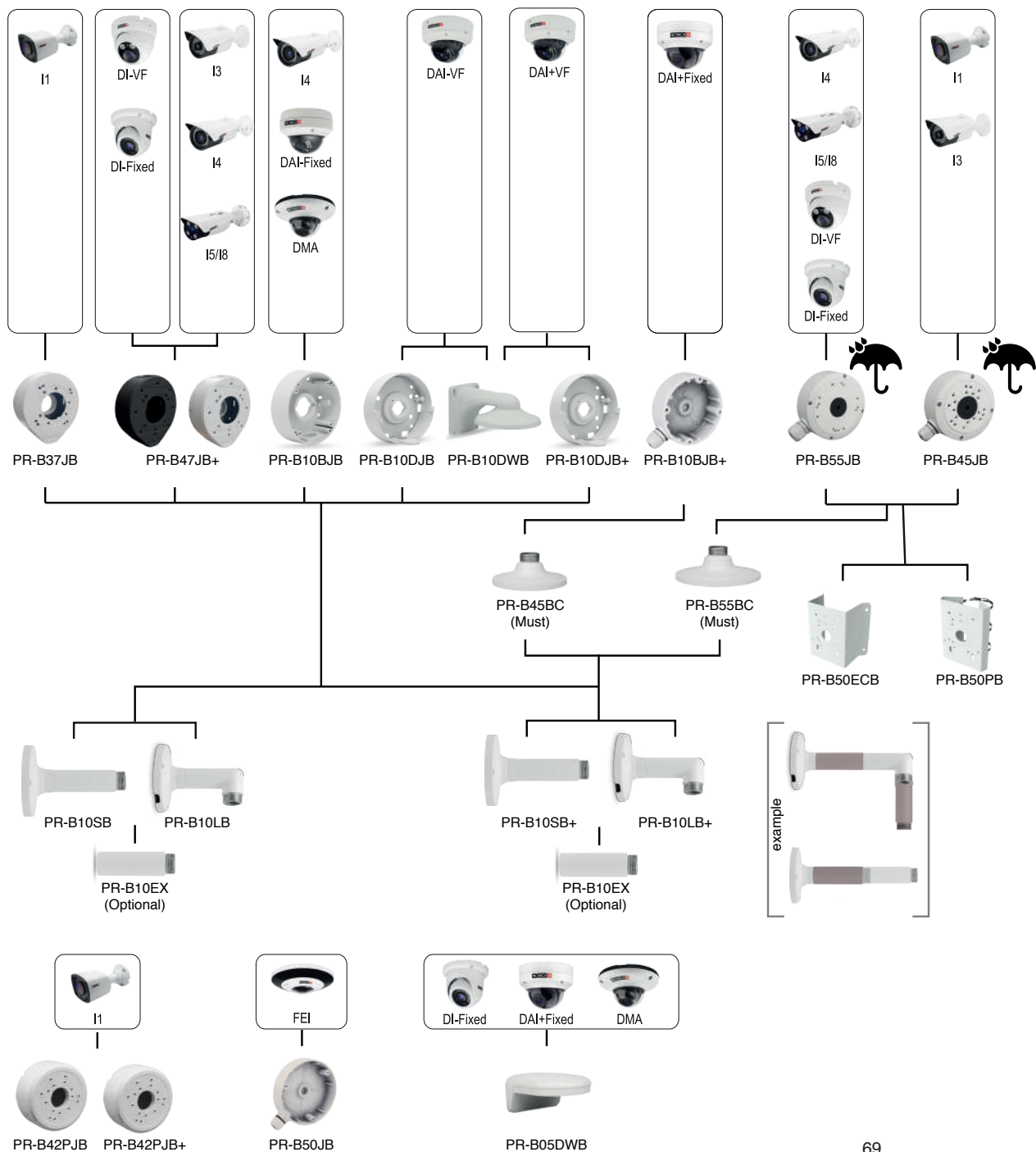
PR-B45BC



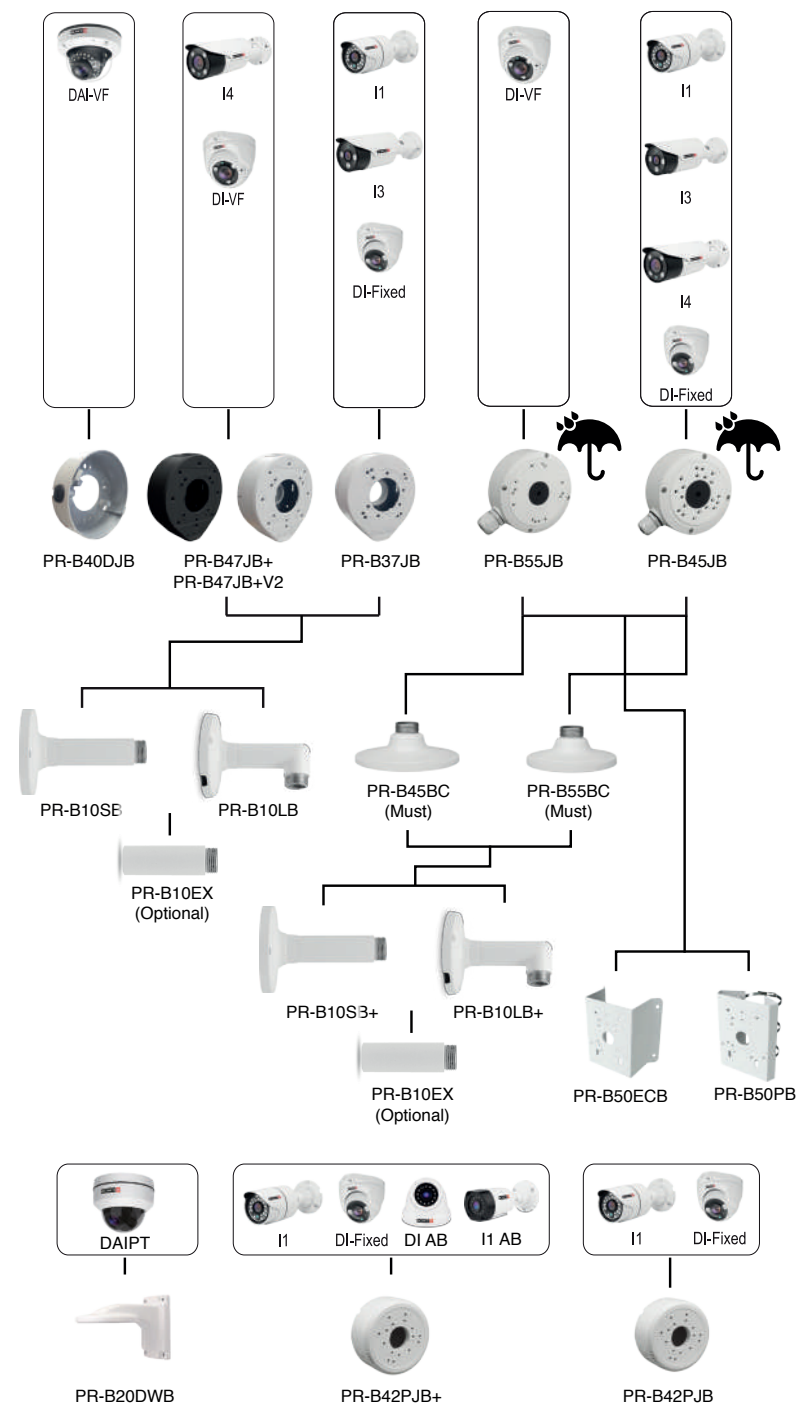
base for PR-B45JB PR-B10JB+

*Coming soon

IP







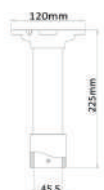
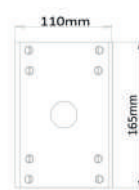
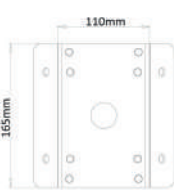
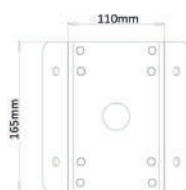


AHD



PTZ BRACKETS*


* Supported cameras: Z-20IPE-2IR, Z-30IPE-2IR, Z-20IP-3IR, Z-30IP-3IR, Z-20A-2IR, MZ, DAIPT

PR-B30C	PR-B30P	PR-B30EC	PR-B30IC	PR-B20C	NEW PR-B20DWB
					
Celing bracket	Pole Mount Bracket	External Corner Bracket	Internal Corner Bracket	Ceiling Bracket	Wall bracket
				for MZ PTZ models	for mini dome PTZ DAIPT

PTZ KEYBOARD / JOYSTICK

IP-KEY01	C06
	
IP	ANALOG
Keyboard/ Joystick for IP PTZ * Available upon request	Keyboard/Joystick for analog speed dome (RS-485) and supporting DVRs/NVRs * Available upon request

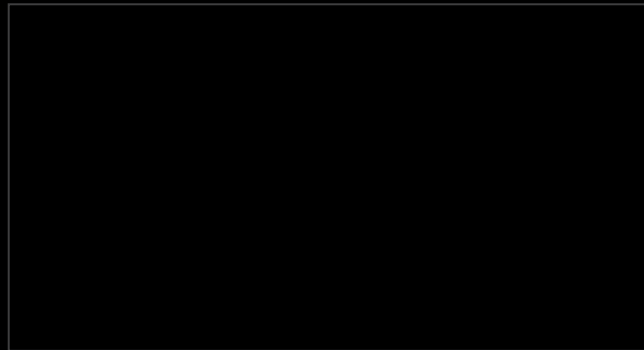
ACCESSORIES LENS

	Resolution: 3MP Focal-length: 2,8-12mm +/- 5% Relative Aperture: 1,4 +/- 5% Mounting: CS Temperature: -20°C / + 60°C Focus & zoom: manual			Focus Range: 0,2m Format: 6.6 (1/2,7") max Auto iris Temperatura di lavoro: -20°C / + 60°C Back Focal-length: 6,6mm		
	CCD FORMAT	Horizontal	Vertical	Diagonal		
	1/2,5"	-	-	-		
	1/2,7"	103° - 30,8°	74°-23°	138° - 40°		
	1/3"	91° - 28°	67,5°-21,2°	120,8°-36°		
	1/4"	73° - 23,4°	44,8°-14,8°	87,6°-27,8°		

ACCESSORIES CONNECTORS

PR-C01	PR-C03	PR-C04	PR-C07	PR-C08	PR-C09	PR-C10	PR-C12	PR-C13	PR-C14
									
CONNECTOR BNC male to RCA female	"T" CONNECTOR BNC male to 2 BNC female	CONNECTOR BNC female to RCA male	CONNECTOR BNC female to BNC female	CONNECTOR DC jack male	CONNECTOR DC jack female	DC CABLE WITH MALE JACK 25 cm length	BNC PLUG	BNC PLUG (one set with three pcs) for ratchet BNC cramping tool.	DC SPLITTER 1-4

Distributed by:



Provision-ISR

R&D and Marketing Offices:

11 Atir Yeda St, Kfar Saba, Israel

Postal Code: 44425

Tel: (972-9) 741 7511 Fax: (972-9) 745 7182

Web: www.provision-isr.com

